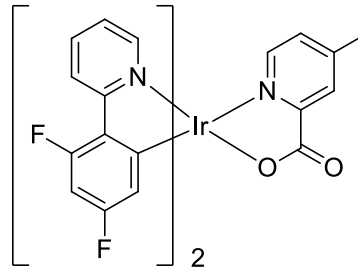


Ancillary ligand effect with methyl and t-butyl for deep blue and high EQE blue phosphorescent organic light-emitting diodes

Product Specifications

LT-N6086	Fir4mpic
Grade	Sublimed, >99%
PL	470 nm (DCM)
Formula	C ₂₉ H ₁₈ F ₄ IrN ₃ O ₂
HOMO/LUMO	-5.74/-3.02 eV
M.W.	708.68 g/mole



*Reference: *Chemical Engineering Journal*, 2021, 411, 128437

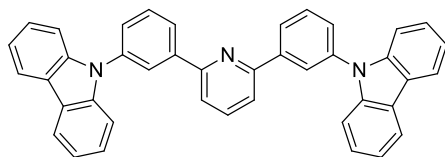
Features

- In this study, compared with FIrpic, UV-Vis and PL plots of FIr4mpic and FIr4tpic do not seem to vary significantly. In terms of the electroluminescent properties of PHOLEDs, the effect of alkyl chain on ancillary chelates is thought to afford deeper blue EL emission and narrower FWHM due to a rise in LUMO level.
- The device with **FIr4mpic** that contains methyl substitution displayed an **EQE of 18.77%** and a **CE of 36.17 cd/A** with **CIE color coordinates (0.155, 0.341)**.

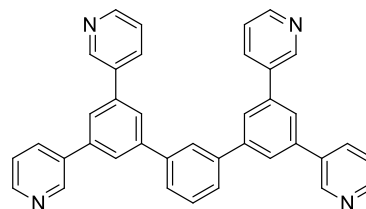
Device Application

Device: ITO / HAT-CN / TAPC / 26DCzPPy: FIr4mpic / BmPyPB / LiF / Al.

Related products from Lumtec:



LT-N491 26DCzPPy



LT-N865 BmPyPB

