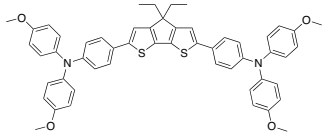


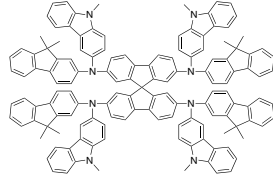
OPV New Materials

Perovskite Solar Cells Materials Hole Transporting Layer (HTL)

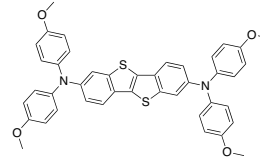
LT-S9807 CPDT
>99%



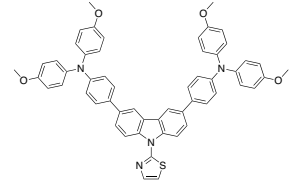
LT-S9808 SBF-FC
>99%



LT-S9809 TBTD
>99%

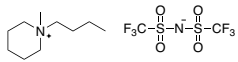


LT-S9810 TC-36
>99%

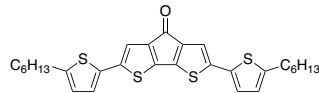


HTL Dopant

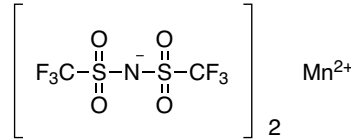
LT-S9803 [BMP]+[TFSI]-
[623580-02-9], >99%



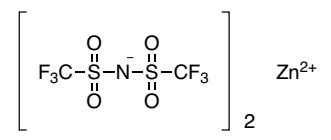
LT-S9804 LQ
>99%



LT-S9805 Mn(TFSI)₂
[207861-55-0], >97%



LT-S9806 Zn(TFSI)₂
[168106-25-0], >98%



Perovskite Precursors

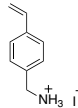
LT-S9879
[7787-64-6], >99%

BiI₃

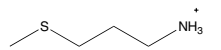
LT-S9884 SnF₂
[7783-47-3], >99%

SnF₂

LT-S9846 VBAl
[2387694-61-1], >99%



LT-S9878 3MTPAI
>99%



LT-S9880 DFPI
>99%

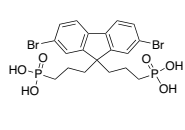


LT-S9882 SMORI
>99%

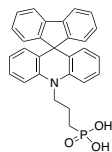


Self-Assembled Monolayer (SAM)

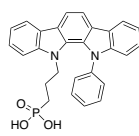
LT-S9889
>98%



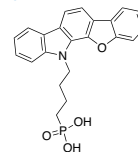
LT-S9895
>98%



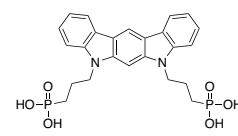
LT-S9896
>98%



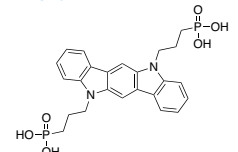
LT-S9897
>98%



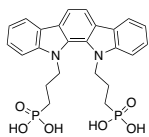
LT-S9898 IDCz-3
>98%



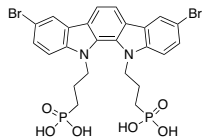
LT-S9899 3-BPIC(i)
>98%



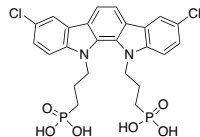
LT-S9900 3-BPIC
>98%



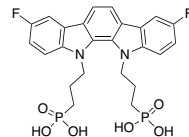
LT-S9901 3-BPIC-Br
>98%



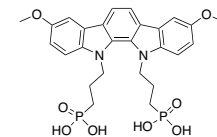
LT-S9902 3-BPIC-Cl
>98%



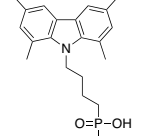
LT-S9903 3-BPIC-F
>98%



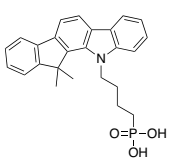
LT-S9904 3-BPIC-OMe
>98%



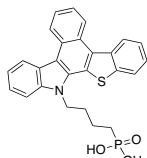
LT-S9905
>98%



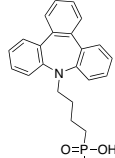
LT-S9906
>98%



LT-S9907
>98%



LT-S9908
>98%



LT-S9909 Me-PhpPACz
>98%

