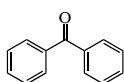


Photopolymerization Materials

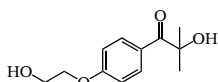
Photopolymerization materials are substances that undergo polymerization upon exposure to different wavelength of light. Photoinitiators are compounds added to photopolymerization materials to initiate the polymerization process. Photoredox catalyst is a special type of chemical substance that can facilitate redox reactions under the influence of light.

UV Light Photoinitiators

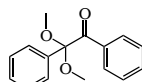
LT-PP1001
[119-61-9], >98%



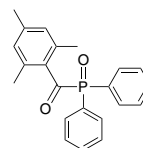
LT-PP1002
[106797-53-9], >98%



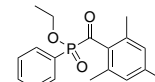
LT-PP1003
[24650-42-8], >98%



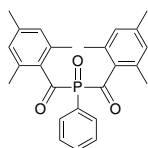
LT-PP1004
[75980-60-8], >98%



LT-PP1005
[84434-11-7], >98%

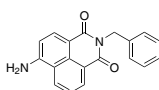


LT-PP1006
[628181-26-8], >98%

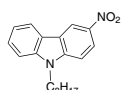


Visible Light Photoinitiators

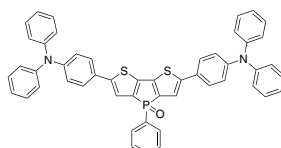
LT-PP2001
[34418-97-8], >98%



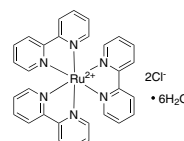
LT-PP2002
[116734-78-2], >98%



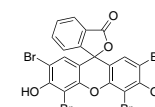
LT-PP2003
[957068-93-8], >98%



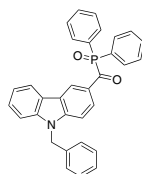
LT-PP2004
[50525-27-4], >98%



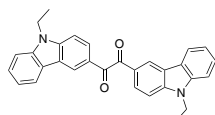
LT-PP2005 Eosin Y
[15086-94-9], >98%



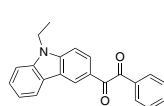
LT-PP2006
[2378118-12-6], >98%



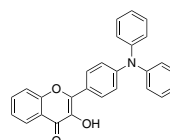
LT-PP2007
[1443059-52-6], >98%



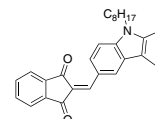
LT-PP2008
[1443059-47-9], >98%



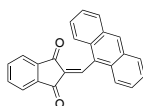
LT-PP2009
[344363-89-9], >98%



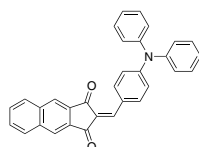
LT-PP2010
[1515829-76-1], >98%



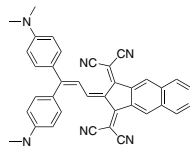
LT-PP2011
[31060-60-3], >98%



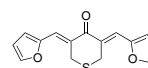
LT-PP2012
[301301-23-5], >98%



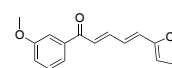
LT-PP2013
[2768002-62-4], >98%



LT-PP2014
[869300-24-3], >98%

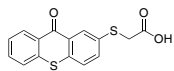


LT-PP2015
[2550335-06-1], >98%

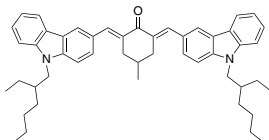


Visible Light Photoinitiators

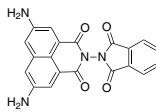
LT-PP2016
[620170-13-0], >98%



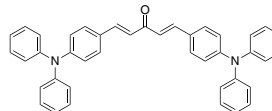
LT-PP2017
[2408732-35-2], >98%



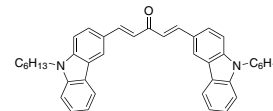
LT-PP2018
[1667735-64-9], >98%



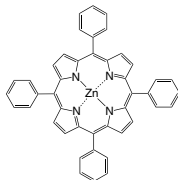
LT-PP2019
[209862-39-5], >98%



LT-PP2020
[2382847-11-0], >98%

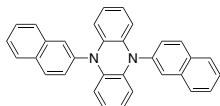


LT-D0005 ZnTPP
[14074-80-7], >98% (HPLC)

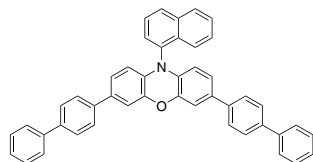


Photoredox Catalysts

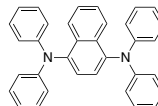
LT-PP3001
[1934269-97-2], >98%



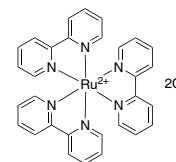
LT-PP3002
[1987900-95-7], >98%



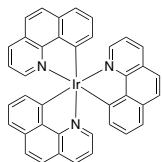
LT-PP3003
[244280-90-8], >98%



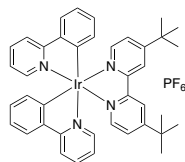
LT-PP3004
[14323-06-9], >98%



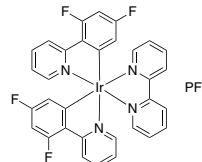
LT-PP3005
[337526-98-4], >98%



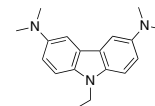
LT-PP3006 [Ir(dtbbpy)(ppy)2][PF6]
[676525-77-2], >98%



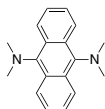
LT-PP3007
[864163-80-4], >98%



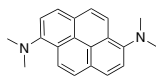
LT-PP3008
[57103-04-5], >98%



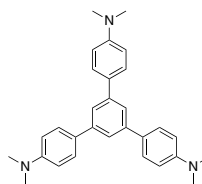
LT-PP3009
[118514-17-3], >98%



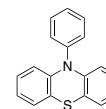
LT-PP3010
[10075-93-1], >98%



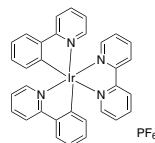
LT-PP3011
[128366-37-0], >98%



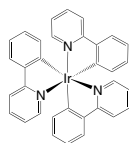
LT-PP3012
[7152-42-3], >98%



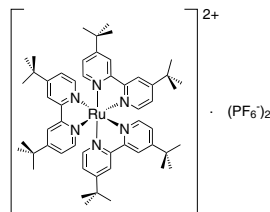
LT-PP3013
[106294-60-4], >98%



LT-E504 fac-Ir(ppy)3
[94928-86-6], Sublimed >99%



LT-N727 Ru(dtbbpy)3·2(PF6)
[75777-87-6], Sublimed >99%



Head Office: 31F-5, No. 99, Sec. 1, Xintai 5th Rd., Xizhi, New Taipei City 22175, Taiwan TEL: +886-2-2697-5600, FAX: +886-2-2697-5601.
 Factory I: 2F, No. 17, R&D Road II, Science-Based Industrial Park, Hsin-Chu 30076, Taiwan TEL: +886-3-666-3188, FAX: +886-3-666-9288.
 Factory II: 1F, No. 9 Gongye E. 9th Rd., Hsinchu Science Park, Hsinchu 30075, Taiwan TEL: +886-3-666-8800, FAX: +886-3-666-7058.
 總公司: 22175新北市汐止區新台五路一段99號31樓之5 ☎ 02-2697-5600 ☎ 02-2697-5601.
 新竹廠 I: 30076新竹科學工業園區研發二路17號2樓 ☎ 03-666-3188 ☎ 03-666-9288.
 新竹廠 II: 30075新竹科學工業園區工業東九路9號1樓 ☎ 03-666-8800 ☎ 03-666-7058.
 E-mail: sales@lumtec.com.tw, Web: www.lumtec.com.tw

