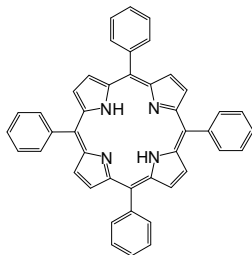


### LT-D0001

#### *meso*-Tetraphenylporphine

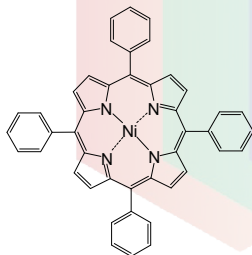
CAS No. : 917-23-7  
 Grade : > 97% (HPLC)  
 Formula :  $C_{44}H_{30}N_4$   
 M.W. : 614.75 g/mole  
 UV : 514 nm (in  $CH_2Cl_2$ )



### LT-D0002

#### Nickel(II) *meso*-tetraphenylporphine

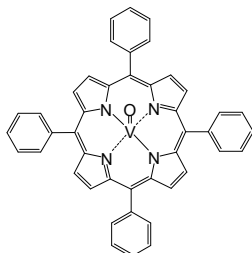
CAS No. : 14172-92-0  
 Grade : > 97% (HPLC)  
 Formula :  $C_{44}H_{28}N_4Ni$   
 M.W. : 671.41 g/mole  
 UV : 525 nm (in THF)



### LT-D0003

#### Vanadyl *meso*-tetraphenylporphine

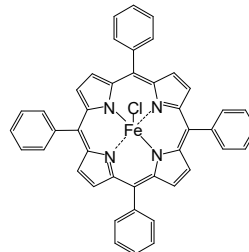
CAS No. : 14705-63-6  
 Grade : > 97% (HPLC)  
 Formula :  $C_{44}H_{28}N_4OV$   
 M.W. : 679.66 g/mole  
 UV : 423 nm (in THF)



### LT-D0004

#### Iron(III) *meso*-tetraphenylporphine Chloride

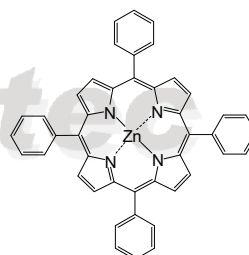
CAS No. : 16456-81-8  
 Grade : > 97% (HPLC)  
 Formula :  $C_{44}H_{28}ClFeN_4$   
 M.W. : 704.02 g/mole



### LT-D0005

#### Zinc(II) *meso*-tetraphenylporphine

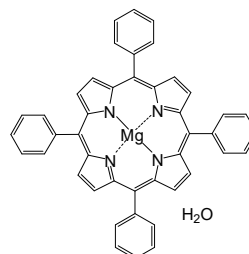
CAS No. : 14074-80-7  
 Grade : > 98% (HPLC)  
 Formula :  $C_{44}H_{28}N_4Zn$   
 M.W. : 678.11 g/mole



### LT-D0006

#### Magnesium(II) *meso*-tetraphenylporphine hydrate

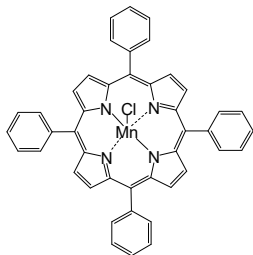
CAS No. : 14640-21-2  
 Grade : > 98% (HPLC)  
 Formula :  $C_{44}H_{30}MgN_4O$   
 M.W. : 655.04 g/mole



### LT-D0007

Manganese(III) *meso*-tetraphenylporphine chloride

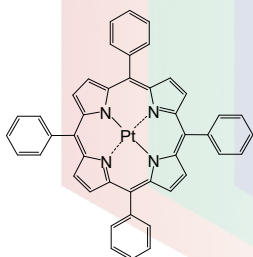
CAS No. : 32195-55-4  
 Grade : > 95% (HPLC)  
 Formula :  $C_{44}H_{28}ClMnN_4$   
 M.W. : 703.11 g/mole  
 UV : 583, 621 nm (in THF)



### LT-D0008

Platinum(II) *meso*-tetraphenylporphine

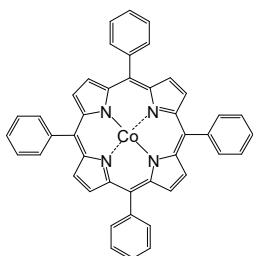
CAS No. : 14187-14-5  
 Grade : > 97% (HPLC)  
 Formula :  $C_{44}H_{28}N_4Pt$   
 M.W. : 807.8 g/mole



### LT-D0009

Cobalt(II) *meso*-tetraphenylporphine

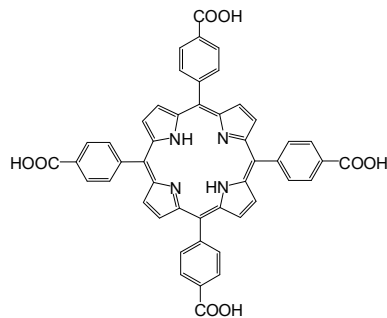
CAS No. : 14172-90-8  
 Grade : > 97% (HPLC)  
 Formula :  $C_{44}H_{28}CoN_4$   
 M.W. : 671.65 g/mole



### LT-D0010

*meso*-Tetra(4-carboxyphenyl)porphine

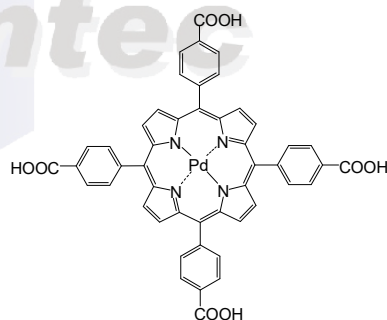
CAS No. : 14609-54-2  
 Grade : > 97% (HPLC)  
 Formula :  $C_{48}H_{30}N_4O_8$   
 M.W. : 790.79 g/mole  
 UV : 411 nm (in  $CH_2Cl_2$ )



### LT-D0011

Palladium(II) *meso*-tetra(4-carboxyphenyl)porphine

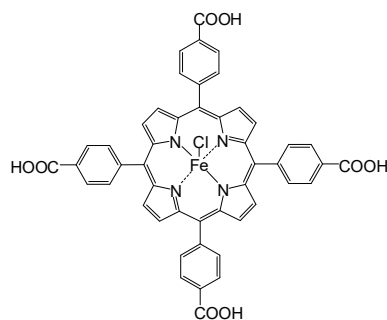
CAS No. : 94288-44-5  
 Grade : > 95% (HPLC)  
 Formula :  $C_{48}H_{26}N_4O_8Pd$   
 M.W. : 895.18 g/mole



### LT-D0012

Iron(III) *meso*-tetra(4-carboxyphenyl)porphine chloride

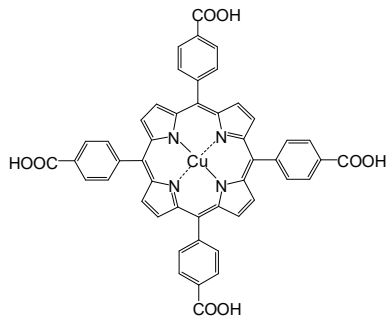
CAS No. : 55266-17-6  
 Grade : > 98% (HPLC)  
 Formula :  $C_{48}H_{28}ClFeN_4O_8$   
 M.W. : 880.06 g/mole



### LT-D0013

Copper(II) *meso*-tetra(4-carboxyphenyl)porphine

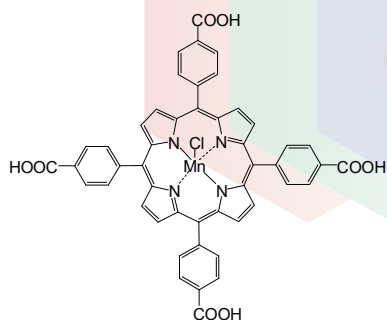
Grade : > 98% (HPLC)  
 Formula :  $C_{48}H_{28}CuN_4O_8$   
 M.W. : 852.3 g/mole



### LT-D0014

Manganese(III) *meso*-tetra(4-carboxyphenyl)porphine chloride

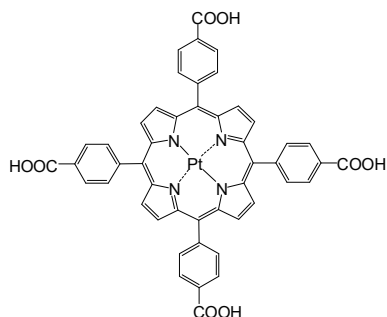
CAS No. : 55266-18-7  
 Grade : > 98% (HPLC)  
 Formula :  $C_{48}H_{28}ClMnN_4O_8$   
 M.W. : 879.15 g/mole



### LT-D0015

Platinum(II) *meso*-tetra(4-carboxyphenyl)porphine

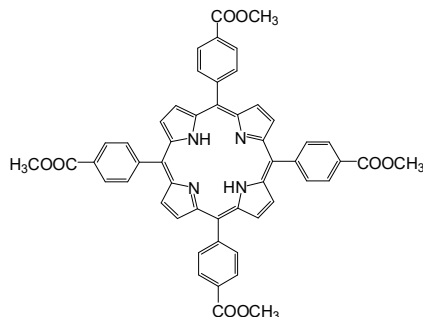
Grade : > 98% (HPLC)  
 Formula :  $C_{48}H_{28}N_4O_8Pt$   
 M.W. : 983.84 g/mole



### LT-D0016

*meso*-Tetra(4-carboxyphenyl)porphine tetramethyl ester

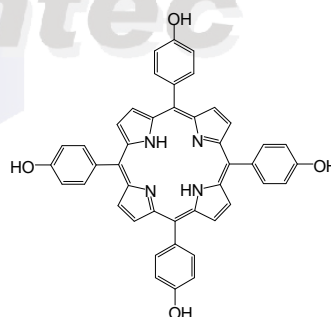
CAS No. : 22112-83-0  
 Grade : > 98% (HPLC)  
 Formula :  $C_{52}H_{38}N_4O_8$   
 M.W. : 846.88 g/mole



### LT-D0017

*meso*-Tetra(*p*-hydroxyphenyl)porphine

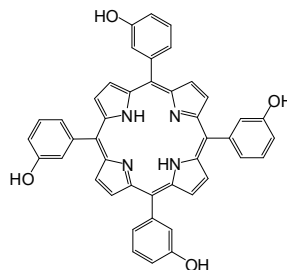
CAS No. : 51094-17-8  
 Grade : > 95% (HPLC)  
 Formula :  $C_{44}H_{30}N_4O_4$   
 M.W. : 678.73 g/mole  
 UV : 421 nm (in  $CH_2Cl_2$ )



### LT-D0018

*meso*-Tetra(3-hydroxyphenyl)porphine

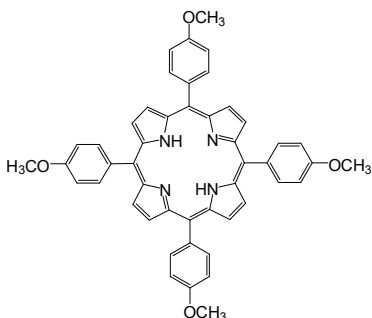
CAS No. : 22112-79-4  
 Grade : > 98% (HPLC)  
 Formula :  $C_{44}H_{30}N_4O_4$   
 M.W. : 678.73 g/mole



### LT-D0019

*meso*-Tetra (4-methoxyphenyl) porphine

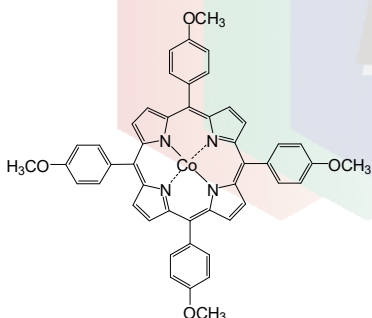
CAS No. : 22112-78-3  
 Grade : > 95% (HPLC)  
 Formula :  $C_{48}H_{38}N_4O_4$   
 M.W. : 734.86 g/mole  
 UV : 424 nm (in  $CH_2Cl_2$ )



### LT-D0020

Cobalt(II) *meso*-Tetra (4-methoxyphenyl) porphine

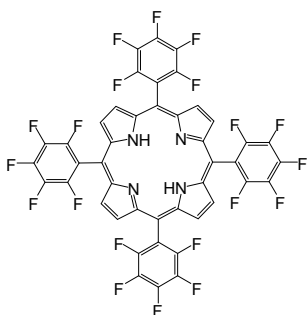
CAS No. : 28903-71-1  
 Grade : > 98% (HPLC)  
 Formula :  $C_{48}H_{36}CoN_4O_4$   
 M.W. : 791.77 g/mole



### LT-D0021

*meso*-Tetra(pentafluorophenyl)porphine

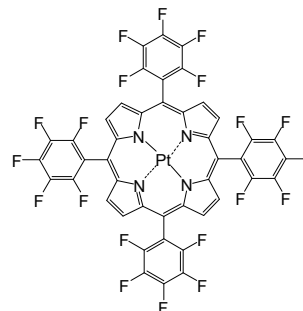
CAS No. : 25440-14-6  
 Grade : > 90% (HPLC)  
 Formula :  $C_{44}H_{10}F_{20}N_4$   
 M.W. : 974.56 g/mole  
 UV : 416 nm (in  $CH_2Cl_2$ )



### LT-D0022

Platinum(II) *meso*-tetra(pentafluorophenyl)porphine

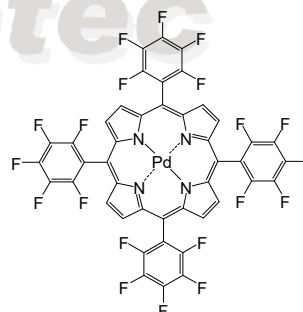
CAS No. : 109781-47-7  
 Grade : > 98% (HPLC)  
 Formula :  $C_{44}H_8F_{20}N_4Pt$   
 M.W. : 1167.61 g/mole



### LT-D0023

Palladium(II) *meso*-tetra(pentafluorophenyl)porphine

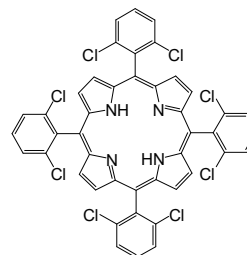
CAS No. : 72076-09-6  
 Grade : > 98% (HPLC)  
 Formula :  $C_{44}H_8F_{20}N_4Pd$   
 M.W. : 1078.95 g/mole  
 UV : 400 nm (in Acetone)



### LT-D0024

*meso*-Tetra(*o*-dichlorophenyl)porphine

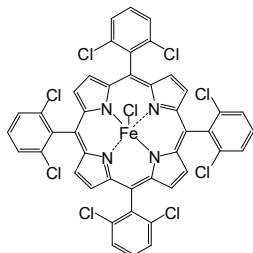
CAS No. : 37083-37-7  
 Grade : > 98% (HPLC)  
 Formula :  $C_{44}H_{22}Cl_8N_4$   
 M.W. : 890.29 g/mole



### LT-D0025

Iron(III) *meso*-tetra(*o*-dichlorophenyl)porphine chloride

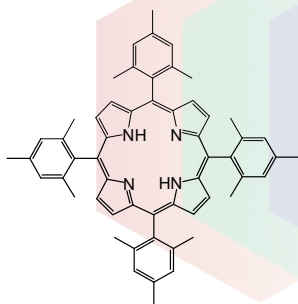
CAS No. : 91042-27-2  
 Grade : > 98% (HPLC)  
 Formula :  $C_{45}H_{23}Cl_9FeN_4$   
 M.W. : 979.58 g/mole



### LT-D0026

*meso*-Tetra(2,4,6-trimethylphenyl)porphine

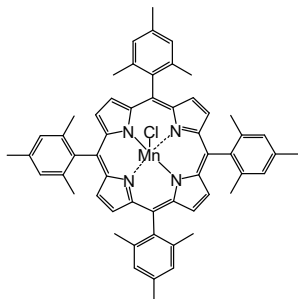
CAS No. : 56396-12-4  
 Grade : > 98% (HPLC)  
 Formula :  $C_{56}H_{54}N_4$   
 M.W. : 783.08 g/mole



### LT-D0027

Manganese(III) *meso*-tetra(2,4,6-trimethylphenyl)porphine chloride

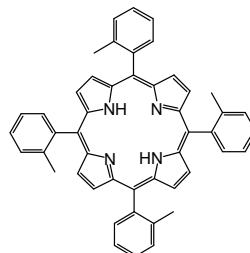
CAS No. : 85939-49-7  
 Grade : > 95% (HPLC)  
 Formula :  $C_{56}H_{52}ClMnN_4$   
 M.W. : 871.43 g/mole



### LT-D0028

*meso*-Tetra(2-methylphenyl)porphine

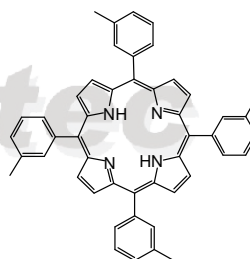
CAS No. : 37083-40-2  
 Grade : > 98% (HPLC)  
 Formula :  $C_{48}H_{38}N_4$   
 M.W. : 670.84 g/mole



### LT-D0029

*meso*-Tetra(3-methylphenyl)porphine

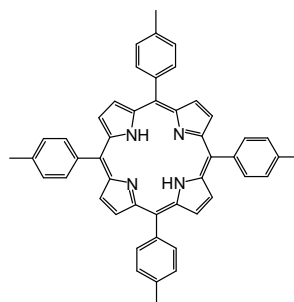
CAS No. : 50849-45-1  
 Grade : > 98% (HPLC)  
 Formula :  $C_{48}H_{38}N_4$   
 M.W. : 670.84 g/mole



### LT-D0030

*meso*-Tetra(4-methylphenyl)porphine

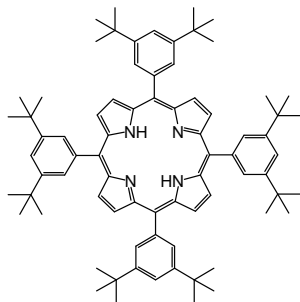
CAS No. : 14527-51-6  
 Grade : > 98% (HPLC)  
 Formula :  $C_{48}H_{38}N_4$   
 M.W. : 670.84 g/mole



### LT-D0031

*meso*-Tetra(3,5-di-*t*-butylphenyl)porphine

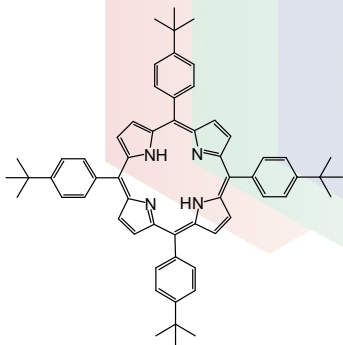
CAS No. : 89372-90-7  
 Grade : > 98% (HPLC)  
 Formula :  $C_{76}H_{94}N_4$   
 M.W. : 1063.59 g/mole



### LT-D0032

*meso*-Tetra(4-*tert*-butylphenyl)porphine

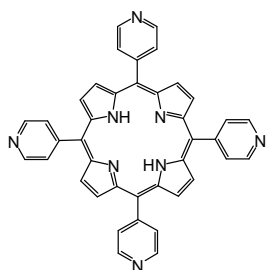
CAS No. : 110452-48-7  
 Grade : > 97% (HPLC)  
 Formula :  $C_{60}H_{62}N_4$   
 M.W. : 839.16 g/mole



### LT-D0033

*meso*-Tetra(4-pyridyl)porphine

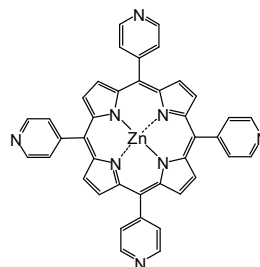
CAS No. : 16834-13-2  
 Grade : > 97% (HPLC)  
 Formula :  $C_{40}H_{26}N_8$   
 M.W. : 618.69 g/mole  
 UV : 412 nm (in  $CH_2Cl_2$ )



### LT-D0034

Zinc(II) *meso*-tetra(4-pyridyl)porphine

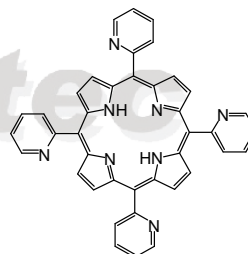
CAS No. : 31183-11-6  
 Grade : > 98%  
 Formula :  $C_{40}H_{24}N_8Zn$   
 M.W. : 682.06 g/mole



### LT-D0035

*meso*-Tetra(2-pyridyl)porphine

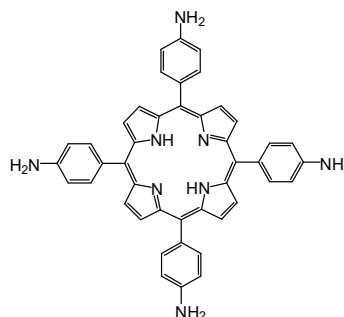
CAS No. : 40904-90-3  
 Grade : > 98% (HPLC)  
 Formula :  $C_{40}H_{26}N_8$   
 M.W. : 618.69 g/mole



### LT-D0036

*meso*-Tetra(4-aminophenyl)porphine

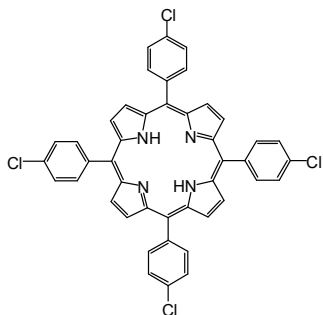
CAS No. : 22112-84-1  
 Grade : > 98% (HPLC)  
 Formula :  $C_{44}H_{34}N_8$   
 M.W. : 674.81 g/mole



### LT-D0037

*meso*-Tetra (4-chlorophenyl) porphine

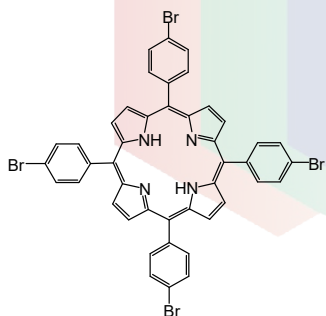
CAS No. : 22112-77-2  
 Grade : > 98% (HPLC)  
 Formula :  $C_{44}H_{26}Cl_4N_4$   
 M.W. : 752.52 g/mole



### LT-D0038

*meso*-Tetra (4-bromophenyl) porphine

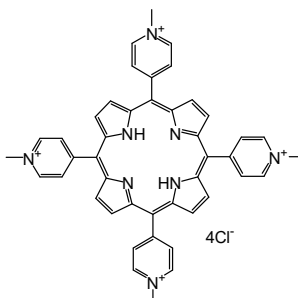
CAS No. : 29162-73-0  
 Grade : > 98% (HPLC)  
 Formula :  $C_{44}H_{26}Br_4N_4$   
 M.W. : 930.32 g/mole



### LT-D0039

*meso*-Tetra (N-methyl-4-pyridyl) porphine tetrachloride

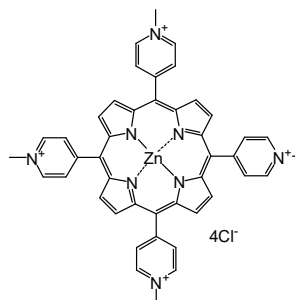
CAS No. : 92739-63-4  
 Grade : > 98% (HPLC)  
 Formula :  $C_{44}H_{36}Cl_4N_8$   
 M.W. : 820.64 g/mole



### LT-D0040

Zinc(II) *meso*-tetra(N-methyl-4-pyridyl)porphine tetrachloride

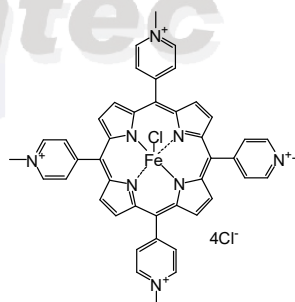
CAS No. : 28850-44-4  
 Grade : > 98% (HPLC)  
 Formula :  $C_{44}H_{36}Cl_4N_8Zn$   
 M.W. : 884.03 g/mole



### LT-D0041

Iron(III) *meso*-tetra(N-methyl-4-pyridyl)porphine pentachloride

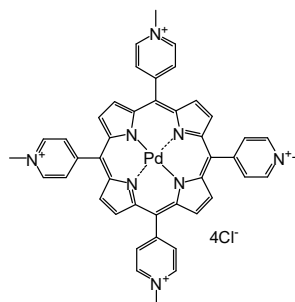
CAS No. : 133314-07-5  
 Grade : > 98% (HPLC)  
 Formula :  $C_{44}H_{36}Cl_5FeN_8$   
 M.W. : 909.92 g/mole



### LT-D0042

Palladium(II) *meso*-tetra(N-methyl-4-pyridyl)porphine tetrachloride

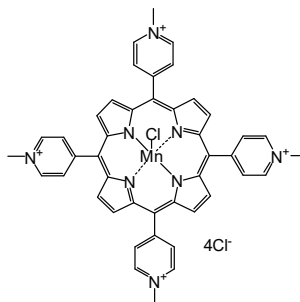
CAS No. : 110314-07-3  
 Grade : > 98% (HPLC)  
 Formula :  $C_{44}H_{36}Cl_4N_8Pd$   
 M.W. : 925.04 g/mole



### LT-D0043

Manganese(III) *meso*-tetra(*N*-methyl-4-pyridyl)porphine pentachloride

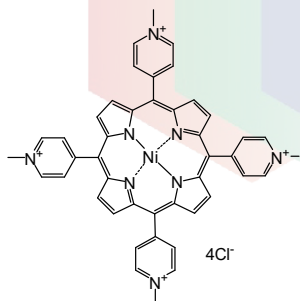
CAS No. : 125565-45-9  
 Grade : > 95%  
 Formula :  $C_{44}H_{36}Cl_5MnN_8$   
 M.W. : 909.01 g/mole  
 UV : 462 nm (in  $CH_2Cl_2$ )



### LT-D0044

Nickel(II) *meso*-tetra(*N*-methyl-4-pyridyl)porphine tetrachloride

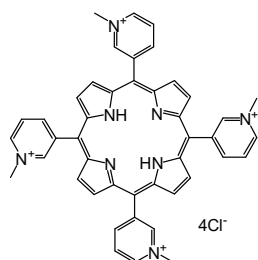
CAS No. : 79407-86-6  
 Grade : > 98%  
 Formula :  $C_{44}H_{36}Cl_4NiN_8$   
 M.W. : 877.32 g/mole



### LT-D0045

*meso*-Tetra (*N*-methyl-3-pyridyl) porphine tetrachloride

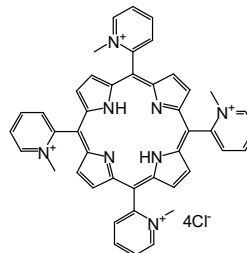
CAS No. : 94343-62-1  
 Grade : > 98%  
 Formula :  $C_{44}H_{38}Cl_4N_8$   
 M.W. : 820.64 g/mole



### LT-D0046

*meso*-Tetra (*N*-methyl-3-pyridyl) porphine tetrachloride

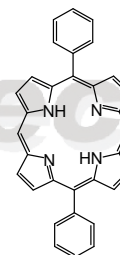
CAS No. : 129051-18-9  
 Grade : > 98%  
 Formula :  $C_{44}H_{38}Cl_4N_8$   
 M.W. : 820.64 g/mole



### LT-D0047

5,15-Diphenylporphine

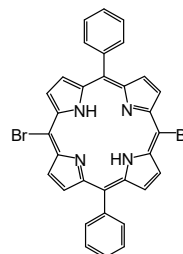
CAS No. : 22112-89-6  
 Grade : > 97% (HPLC)  
 Formula :  $C_{32}H_{22}N_4$   
 M.W. : 462.56 g/mole



### LT-D0048

5,15-Dibromo-10,20-diphenylporphine

CAS No. : 151256-86-9  
 Grade : > 98%  
 Formula :  $C_{32}H_{20}Br_2N_4$   
 M.W. : 620.34 g/mole

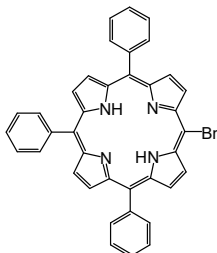




### LT-D0049

5-Bromo-10,15,20-triphenylporphine

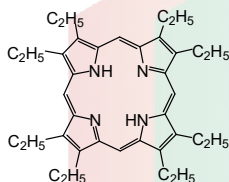
CAS No. : 67066-09-5  
 Grade : > 95% (HPLC)  
 Formula :  $C_{38}H_{25}BrN_4$   
 M.W. : 617.54 g/mole



### LT-D0050

Octaethylporphine

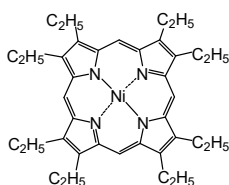
CAS No. : 2683-82-1  
 Grade : > 97% (HPLC)  
 Formula :  $C_{36}H_{46}N_4$   
 M.W. : 534.78 g/mole



### LT-D0051

Nickel(II) octaethylporphine

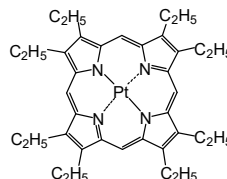
CAS No. : 24803-99-4  
 Grade : > 98%  
 Formula :  $C_{36}H_{44}N_4Ni$   
 M.W. : 591.45 g/mole



### LT-N752

Platinum(II) octaethylporphine

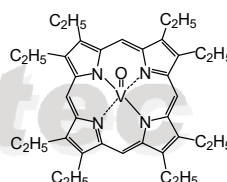
CAS No. : 31248-39-2  
 Grade : > 95% (HPLC)  
 Formula :  $C_{36}H_{44}N_4Pt$   
 M.W. : 727.84 g/mole  
 UV : 389, 534 nm (in  $CH_2Cl_2$ )  
 PL : 649 nm (in  $CH_2Cl_2$ )



### LT-D0052

Vanadyl octaethylporphine

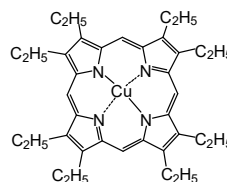
CAS No. : 27860-55-5  
 Grade : > 95% (HPLC)  
 Formula :  $C_{36}H_{44}N_4OV$   
 M.W. : 599.7 g/mole  
 UV : 407 nm (in THF)



### LT-D0053

Copper(II) octaethylporphine

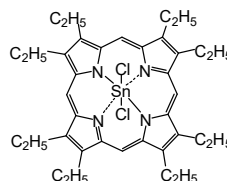
CAS No. : 14409-63-3  
 Grade : > 98%  
 Formula :  $C_{36}H_{44}CuN_4$   
 M.W. : 596.31 g/mole



### LT-D0054

Tin(IV) octaethylporphine dichloride

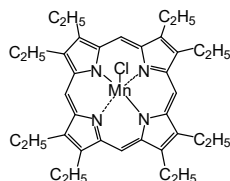
CAS No. : 25777-43-9  
 Grade : > 95% (HPLC)  
 Formula :  $C_{36}H_{44}Cl_2N_4Sn$   
 M.W. : 722.38 g/mole



### LT-D0055

Manganese(III) octaethylporphine chloride

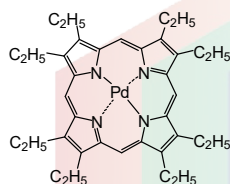
CAS No. : 28265-17-0  
 Grade : > 98% (HPLC)  
 Formula :  $C_{36}H_{44}ClMnN_4$   
 M.W. : 623.15 g/mole



### LT-D0056

Palladium(II) octaethylporphine

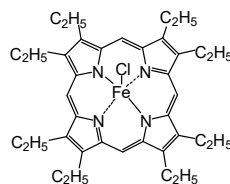
CAS No. : 24804-00-0  
 Grade : > 98% (HPLC)  
 Formula :  $C_{36}H_{44}N_4Pd$   
 M.W. : 639.18 g/mole  
 UV : 393 nm (in THF)



### LT-D0057

Iron(III) octaethylporphine chloride

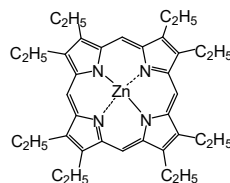
CAS No. : 28755-93-3  
 Grade : > 98% (HPLC)  
 Formula :  $C_{36}H_{44}ClFeN_4$   
 M.W. : 624.06 g/mole



### LT-D0058

Zinc(II) octaethylporphine

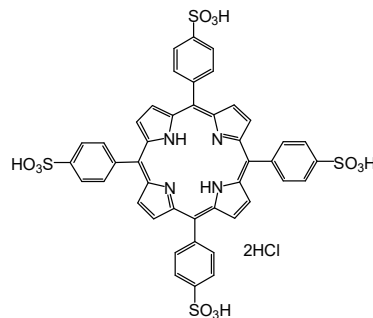
CAS No. : 17632-18-7  
 Grade : > 98% (HPLC)  
 Formula :  $C_{36}H_{44}N_4Zn$   
 M.W. : 598.17 g/mole  
 UV : 400 nm (in THF)



### LT-D0062

meso-Tetra(4-sulfonatophenyl)porphine dihydrochloride

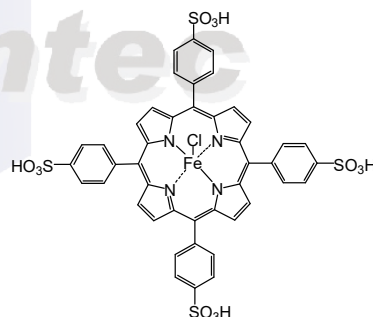
Formula :  $C_{44}H_{32}Cl_2N_4O_{12}S_4$   
 Grade : > 98% (HPLC)  
 M.W. : 1007.99 g/mole



### LT-D0063

Iron(III) meso-tetra(4-sulfonatophenyl)porphine chloride (acid form)

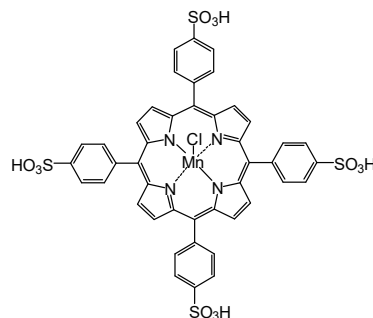
CAS No. : 90384-82-0  
 Grade : > 98% (HPLC)  
 Formula :  $C_{44}H_{28}ClFeN_4O_{12}S_4$   
 M.W. : 1024.27 g/mole



### LT-D0064

Manganese(III) meso-tetra(4-sulfonatophenyl)porphine chloride (acid form)

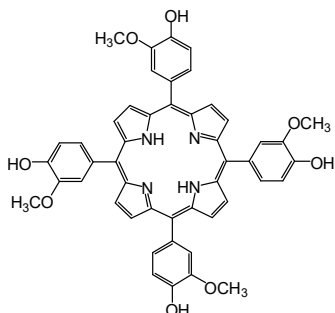
CAS No. : 221176-50-7  
 Grade : > 98% (HPLC)  
 Formula :  $C_{44}H_{28}ClMnN_4O_{12}S_4$   
 M.W. : 1023.36 g/mole



### LT-D0065

*meso*-Tetra(3-methoxy-4-hydroxyphenyl) porphine

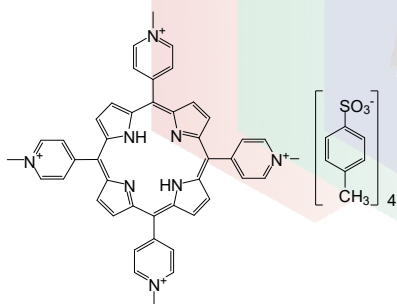
CAS No. : 22112-80-7  
 Grade : > 98% (HPLC)  
 Formula :  $C_{48}H_{38}N_4O_8$   
 M.W. : 798.84 g/mole



### LT-D0066

*meso*-Tetra (*N*-methyl-4-pyridyl) porphine tetratosylate

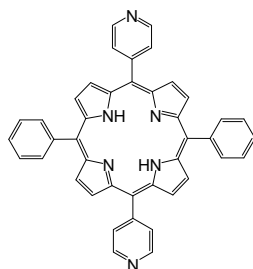
CAS No. : 36951-72-1  
 Grade : > 97% (HPLC)  
 Formula :  $C_{72}H_{66}N_8O_{12}S_4$   
 M.W. : 1363.6 g/mole  
 UV : 421 nm



### LT-D0068

5,15-Diphenyl-10,20-di(4-pyridyl)-21*H*,23*H*-porphine

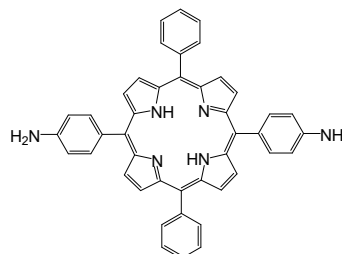
CAS No. : 71410-72-5  
 Grade : > 98% (HPLC)  
 Formula :  $C_{42}H_{28}N_6$   
 M.W. : 616.71 g/mole



### LT-D0069

5,15-Di(4-aminophenyl)-10,20-diphenyl porphine

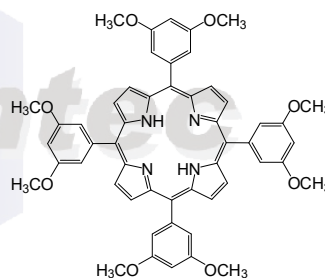
CAS No. : 116206-75-8  
 Grade : > 98% (HPLC)  
 Formula :  $C_{44}H_{32}N_6$   
 M.W. : 644.77 g/mole



### LT-D0074

5,10,15,20-Tetrakis(3,5-dimethoxyphenyl)porphyrin

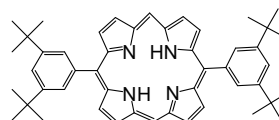
CAS No. : 74684-34-7  
 Grade : > 95% (HPLC)  
 Formula :  $C_{52}H_{46}N_4O_8$   
 M.W. : 854.96 g/mole



### K0485

5,15-Bis[3,5-di(*tert*-butyl)phenyl]porphyrin

CAS No. : 173613-63-3  
 Grade : > 97% (HPLC)  
 Formula :  $C_{48}H_{54}N_4$   
 M.W. : 686.97 g/mole



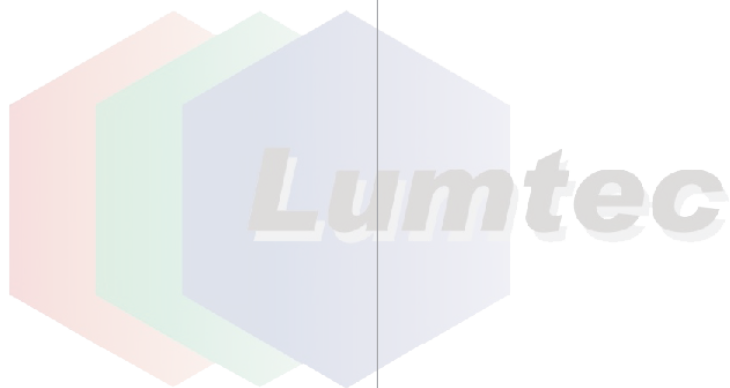
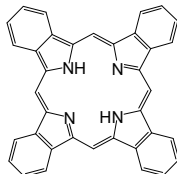
### LT-S9044

Tetrabenzoporphine

CAS No. : 52952-31-5

Formula :  $C_{36}H_{22}N_4$

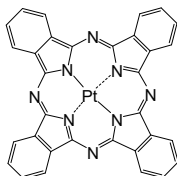
M.W. : 510.59 g/mole



### LT-N219 | PtPC

Phthalocyanine, platinum complex

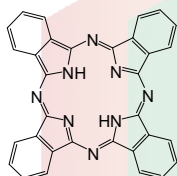
CAS No. : 14075-08-2  
 Grade : Sublimed product  
 Formula :  $C_{32}H_{16}N_8Pt$   
 M.W. : 707.6 g/mole  
 UV : 314, 684 nm (in  $CH_2Cl_2$ )



### LT-N222 | H2PC

Phthalocyanine

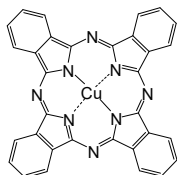
CAS No. : 574-93-6  
 Grade : Sublimed product  
 Formula :  $C_{32}H_{18}N_8$   
 M.W. : 514.54 g/mole  
 UV : 693 nm (in  $C_6H_6$ )  
 PL : 699 nm (in  $C_6H_6$ )



### LT-E201 | CuPC

Copper(II) phthalocyanine

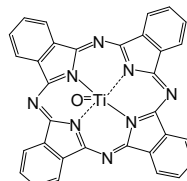
CAS No. : 147-14-8  
 Grade : Sublimed product  
 Formula :  $C_{32}H_{16}CuN_8$   
 M.W. : 576.08 g/mole  
 UV : 345, 631 nm (in  $CH_2Cl_2$ )  
 PL : 404 nm (in film)



### LT-E206 | TiOPC

Titanium oxide phthalocyanine

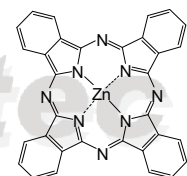
CAS No. : 26201-32-1  
 Grade : Sublimed product  
 Formula :  $C_{32}H_{16}N_8OTi$   
 M.W. : 576.39 g/mole  
 UV : 692 nm  
 PL : 392 (in film)



### LT-S906 | ZnPC

Zinc phthalocyanine

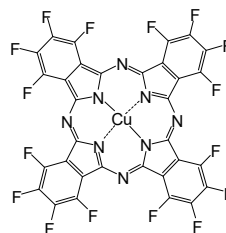
CAS No. : 14320-04-8  
 Grade : Sublimed product  
 Formula :  $C_{32}H_{16}N_8Zn$   
 M.W. : 577.92 g/mole  
 PL : 534 nm (in  $CH_2Cl_2$ )



### LT-S928 | F<sub>16</sub>CuPC

Copper(II) 1,2,3,4,8,9,10,11,15,16,17,18,22,23,24,25-hexadecafluoro-29H,31H-phthalocyanine

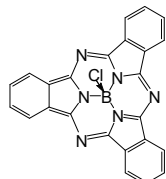
CAS No. : 14916-87-1  
 Grade : Sublimed product  
 Formula :  $C_{32}CuF_{16}N_8$   
 M.W. : 863.93 g/mole  
 UV : 690 nm (in THF)



### LT-S943 | SubPC

Boron subphthalocyanine chloride

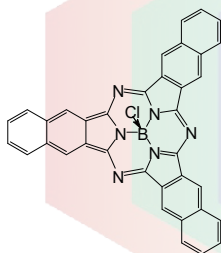
CAS No. : 36530-06-0  
 Grade : Sublimed product  
 Formula :  $C_{24}H_{12}BN_6Cl$   
 M.W. : 430.66 g/mole  
 UV : 565 nm (in DMF)  
 PL : 577 nm (in DMF)



### LT-S947 | SubNC

Boron sub-2,3-naphthalocyanine chloride

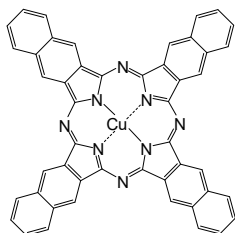
CAS No. : 142710-56-3  
 Grade : Sublimed product  
 Formula :  $C_{36}H_{18}BClN_6$   
 M.W. : 580.84 g/mole  
 UV : 658 nm (in  $CH_2Cl_2$ )



### LT-S962 | CuNC

Copper(II) 2,3-naphthalocyanine

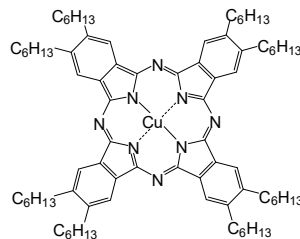
CAS No. : 33273-09-5  
 Grade : Sublimed product  
 Formula :  $C_{48}H_{24}CuN_8$   
 M.W. : 776.3 g/mole  
 UV : 681 nm (in  $CH_2Cl_2$ )



### LT-S963 | CuPC-8H

Copper(II)-2,3,9,10,16,17,23,24-octa-n-hexyl-29H,31H-phthalocyanine

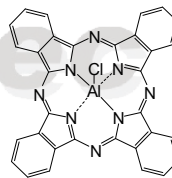
CAS No. : 153151-22-5  
 Grade : > 98% (NMR)  
 Formula :  $C_{80}H_{112}CuN_8$   
 M.W. : 1249.34 g/mole  
 UV : 680 nm (in  $CH_2Cl_2$ )



### LT-S9025 | AIPCCI

Phthalocyanine chloroaluminum

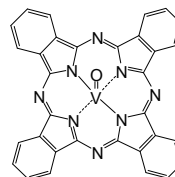
CAS No. : 14154-42-8  
 Grade : Sublimed product  
 Formula :  $C_{32}H_{16}AlClN_8$   
 M.W. : 574.97 g/mole  
 UV : 675 nm (in DMF)



### LT-S9053 | VOPc

Oxyvanadium phthalocyanine

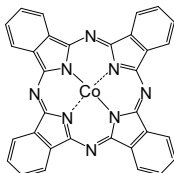
CAS No. : 13930-88-6  
 Grade : Sublimed product  
 Formula :  $C_{32}H_{16}N_8OV$   
 M.W. : 579.47 g/mole  
 UV : 338, 684 nm (in  $CH_2Cl_2$ )



### LT-D2001 | CoPC

Cobalt(II) phthalocyanine

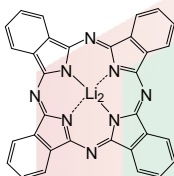
CAS No. : 3317-67-7  
 Grade : Sublimed product  
 Formula :  $C_{32}H_{16}CoN_8$   
 M.W. : 571.47 g/mole



### LT-D2002 | Li<sub>2</sub>PC

Dilithium phthalocyanine

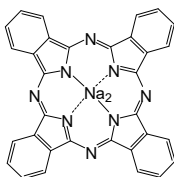
CAS No. : 25510-41-2  
 Grade : Sublimed product  
 Formula :  $C_{32}H_{16}Li_2N_8$   
 M.W. : 526.42 g/mole  
 UV : 658 nm (in DMF)



### LT-D2003 | Na<sub>2</sub>PC

Disodium phthalocyanine

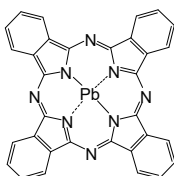
CAS No. : 25476-27-1  
 Grade : Sublimed product  
 Formula :  $C_{32}H_{16}Na_2N_8$   
 M.W. : 558.52 g/mole  
 UV : 656, 692 nm (in  $CHCl_3$ )



### LT-D2004 | PbPC

Lead(II) phthalocyanine

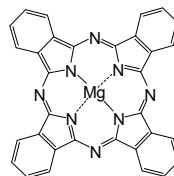
CAS No. : 15187-16-3  
 Grade : Sublimed > 99%  
 Formula :  $C_{32}H_{16}PbN_8$   
 M.W. : 719.74 g/mole  
 UV : 698 nm (in DMF)



### LT-D2006 | MgPC

Magnesium(II) phthalocyanine

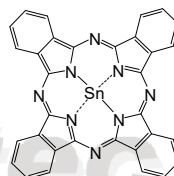
CAS No. : 1661-03-6  
 Grade : Sublimed product  
 Formula :  $C_{32}H_{16}MgN_8$   
 M.W. : 536.84 g/mole  
 UV : 668 nm (in DMF)



### LT-S9086 | SnPC

Tin(II) phthalocyanine

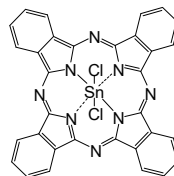
CAS No. : 15304-57-1  
 Grade : Sublimed product  
 Formula :  $C_{32}H_{16}SnN_8$   
 M.W. : 631.25 g/mole



### LT-D2008 | SnCl<sub>2</sub>PC

Tin(IV) phthalocyanine dichloride

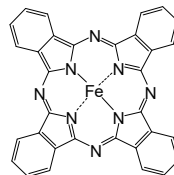
CAS No. : 18253-54-8  
 Grade : Sublimed product  
 Formula :  $C_{32}H_{16}Cl_2SnN_8$   
 M.W. : 702.15 g/mole



### LT-D2009 | FePC

Iron(II) phthalocyanine

CAS No. : 132-16-1  
 Grade : Sublimed product  
 Formula :  $C_{32}H_{16}FeN_8$   
 M.W. : 568.38 g/mole  
 UV : 675 nm (in DMF)

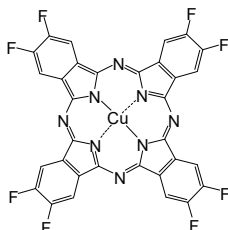


Our products are used for testing and research purpose; they are not guaranteed in patent contention by customer use.

### LT-D2010 | 2,3-F<sub>8</sub>CuPC

Copper(II) 2,3,9,10,16,17,23,24-octafluorophthalocyanine

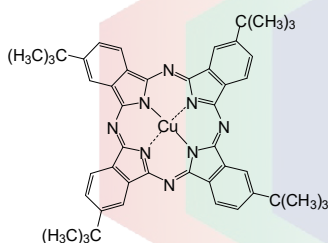
CAS No. : 148651-60-9  
 Grade : Sublimed product  
 Formula : C<sub>32</sub>H<sub>8</sub>CuF<sub>8</sub>N<sub>8</sub>  
 M.W. : 720.01 g/mole



### LT-D2011

Copper(II) 2,9,16,23-tetra-*tert*-butylphthalocyanine

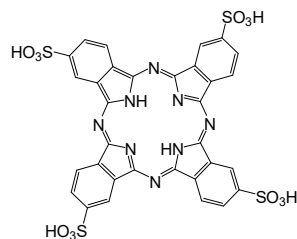
CAS No. : 39001-64-4  
 Grade : Sublimed product  
 Formula : C<sub>48</sub>H<sub>48</sub>CuN<sub>8</sub>  
 M.W. : 800.51 g/mole  
 UV : 672 nm (in DMF)



### LT-D2012

Phthalocyanine tetrasulfonic acid

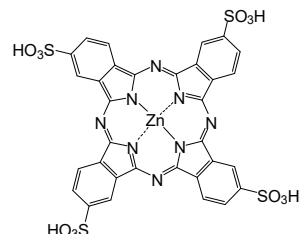
CAS No. : 33308-41-7  
 Grade : > 96% (with isomers)  
 Formula : C<sub>32</sub>H<sub>18</sub>N<sub>8</sub>O<sub>12</sub>S<sub>4</sub>  
 M.W. : 834.79 g/mole



### LT-D2013

Zinc(II) phthalocyanine tetrasulfonic acid

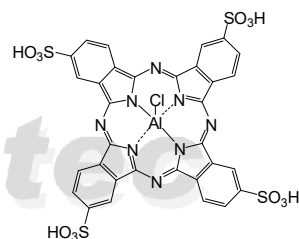
CAS No. : 61586-86-5  
 Grade : > 96% (with isomers)  
 Formula : C<sub>32</sub>H<sub>16</sub>N<sub>8</sub>O<sub>12</sub>S<sub>4</sub>Zn  
 M.W. : 898.19 g/mole



### LT-D2014

Aluminum(III) phthalocyanine chloride tetrasulfonic acid

Grade : > 96% (with isomers)  
 Formula : C<sub>32</sub>H<sub>16</sub>AlClN<sub>8</sub>O<sub>12</sub>S<sub>4</sub>  
 M.W. : 895.21 g/mole

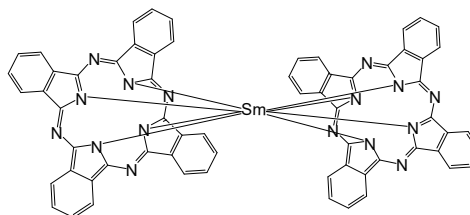


### LT-D2015 | SmPC<sub>2</sub>

Bis(2(3),9(10),16(17),23(24)-tetrakis-(3,4-phenyl)phthalocyaninato)Samarium(III)

CAS No. : 82800-48-4  
 Grade : > 99%  
 Formula : C<sub>64</sub>H<sub>32</sub>N<sub>16</sub>Sm  
 M.W. : 1175.41 g/mole

Reference : *Inorganica Chimica Acta* (2007), 360(1), 122-130



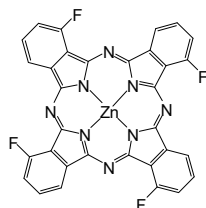


### LT-S9171 | F4ZnPc

Zinc(II)-1,8,15,22-tetrafluoro-29H,31H-phthalocyanin, mixture of isomers

CAS No. : 1120355-28-3  
 Grade : Sublimed, > 99%  
 Formula :  $C_{32}H_{12}F_4N_8Zn$   
 M.W. : 834.79 g/mole  
 UV : 681 nm (in  $CHCl_3$ )  
 TGA : > 300 °C (0.5% weight loss)

Reference : *Solar Energy Materials & Solar Cells* (2013), 118, 165-170

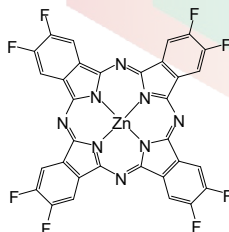


### LT-S9172 | F8ZnPc

Zinc(II)-2,3,9,10,16,17,23,24-octafluoro-29H,31H-phthalocyanin

CAS No. : 676519-80-5  
 Grade : Sublimed, > 99%  
 Formula :  $C_{32}H_8F_8N_8Zn$   
 M.W. : 721.86 g/mole  
 UV : 338, 656 nm (in DMF)  
 TGA : > 300 °C (0.5% weight loss)

Reference : *Solar Energy Materials & Solar Cells* (2013), 118, 165-170

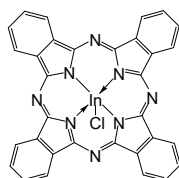


### LT-S9176 | InClPC

Indium(III) phthalocyanine chloride

CAS No. : 19631-19-7  
 Grade : Sublimed, > 99%  
 Formula :  $C_{32}H_{16}ClInN_8$   
 M.W. : 662.79 g/mole  
 UV : 358, 683 nm (in  $CHCl_3$ )  
 TGA : > 300 °C (0.5% weight loss)

Reference : *Organic Electronics* (2015), 17, 229-239

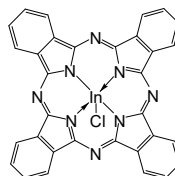


### LT-S9177 | F16FePC

Indium(III) phthalocyanine chloride

CAS No. : 23844-93-1  
 Grade : Sublimed, > 99%  
 Formula :  $C_{32}F_{16}FeN_8$   
 M.W. : 856.22 g/mole  
 UV : 333, 627 nm (in Acetone)  
 TGA : > 300 °C (0.5% weight loss)

Reference : *Nano Letters* (2014), 14(10), 5547-5554

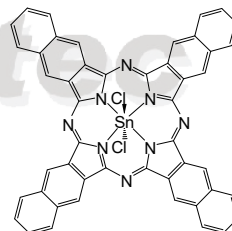


### LT-S9180 | SnNCCl<sub>2</sub>

Tin(IV) 2,3-naphthalocyanine dichloride

CAS No. : 26857-61-4  
 Grade : Sublimed, > 99%  
 Formula :  $C_{48}H_{24}Cl_2N_8Sn$   
 M.W. : 902.37 g/mole  
 TGA : > 300 °C (0.5% weight loss)

Reference : *Organic Electronics* (2013), 14(3), 804-808

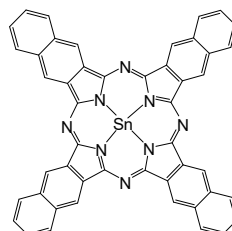


### LT-S9182 | SnNC

Tin(II) 2,3-naphthalocyanine

CAS No. : 110479-58-8  
 Grade : Sublimed, > 99%  
 Formula :  $C_{48}H_{24}N_8Sn$   
 M.W. : 831.47 g/mole  
 TGA : > 300 °C (0.5% weight loss)

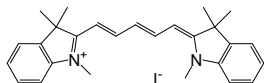
Reference : *Journal of Physical Chemistry A* (2011), 115(33), 9265-9272



### LT-D1237 | HIDC iodide

1,1',3,3,3',3'-Hexamethylindodicarbocyanine iodide

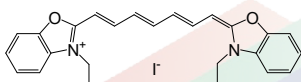
CAS No. : 36536-22-8  
 Grade : > 98% (HPLC)  
 Formula :  $C_{27}H_{31}IN_2$   
 M.W. : 510.45 g/mole  
 UV : 643 nm (in EtOH)  
 PL : 670 nm (in EtOH)



### LT-D1238 |

3,3'-Diethyl-2,2'-oxathiocarbocyanine iodide

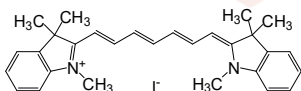
CAS No. : 15185-43-0  
 Grade : > 97% (HPLC)  
 Formula :  $C_{25}H_{25}N_2O_2I$   
 M.W. : 512.38 g/mole  
 UV : 686 nm (in EtOH)  
 PL : 726 nm (in EtOH)



### LT-D1240 | HITC iodide

1,1',3,3,3',3'-Hexamethylindotricarbocyanine iodide

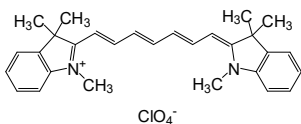
CAS No. : 19764-96-6  
 Grade : > 97% (HPLC)  
 Formula :  $C_{29}H_{33}IN_2$   
 M.W. : 536.49 g/mole  
 UV : 751 nm (in DMSO)  
 PL : 792 nm (in DMSO)



### LT-D1241 | HITC perchlorate

1,1',3,3,3',3'-Hexamethylindotricarbocyanine perchlorate

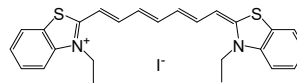
CAS No. : 16595-48-5  
 Grade : > 97% (HPLC)  
 Formula :  $C_{29}H_{33}N_2ClO_4$   
 M.W. : 509.04 g/mole  
 UV : 750 nm (in DMSO)  
 PL : 790 nm (in DMSO)



### LT-D1242 | DTTC iodide

3,3'-Diethylthiatricarbocyanine iodide

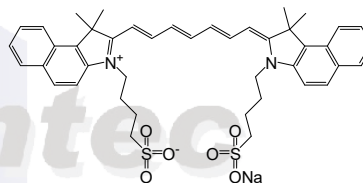
CAS No. : 30711-70-3  
 Grade : > 98% (HPLC)  
 Formula :  $C_{25}H_{25}IN_2S_2$   
 M.W. : 544.51 g/mole  
 UV : 761 nm (in EtOH)  
 PL : 813 nm (in EtOH)



### LT-D1243 | Indocyanine green

Sodium 2-(7-(3,3-dimethyl-1-(4-sulfonatobutyl)benz(e)indolin-2-ylidene)hepta-1,3,5-trien-1-yl)-3,3-dimethyl-1-(4-sulfonatobutyl)benz[e]indolinium

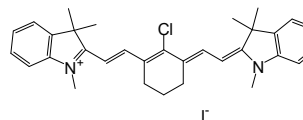
CAS No. : 3599-32-4  
 Grade : > 90% (NMR)  
 Formula :  $C_{43}H_{47}N_2NaO_6S_2$   
 M.W. : 774.96 g/mole  
 UV : 795 nm (in DMSO)  
 PL : 832 nm (in DMSO)



### LT-D1248 | IR-786

2-[2-[2-Chloro-3-[(1,3-dihydro-1,3,3-trimethyl-2H-indol-2-ylidene) ethylidene]-1-cyclohexen-1-yl]ethenyl]-1,3,3-trimethylindolium iodide

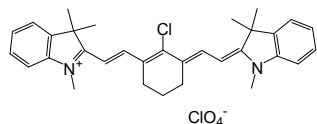
CAS No. : 56289-67-9  
 Grade : > 98% (NMR)  
 Formula :  $C_{32}H_{36}ClIN_2$   
 M.W. : 611.02 g/mole  
 UV : 775 nm (in MeOH)  
 PL : 817 nm (in MeOH)



### LT-D1249 | IR-786 perchlorate

2-[2-[2-Chloro-3-[(1,3-dihydro-1,3,3-trimethyl-2H-indol-2-ylidene)ethylidene]-1-cyclohexen-1-yl] ethenyl]-1,3,3-trimethylindolium perchlorate

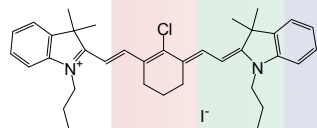
CAS No. : 102185-03-5  
 Grade : > 98% (HPLC)  
 Formula :  $C_{32}H_{36}Cl_2N_2O_4$   
 M.W. : 583.55 g/mole  
 UV : 775 nm (in MeOH)  
 PL : 817 nm (in MeOH)



### LT-D1250 | IR-780 iodide

2-[2-[2-Chloro-3-[(1,3-dihydro-3,3-dimethyl-1-propyl-2H-indol-2-ylidene)ethylidene]-1-cyclohexen-1-yl] ethenyl]-3,3-dimethyl-1-propylindolium iodide

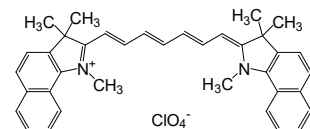
CAS No. : 207399-07-3  
 Grade : > 98% (HPLC)  
 Formula :  $C_{36}H_{44}ClIN_2$   
 M.W. : 667.11 g/mole  
 UV : 776 nm (in MeOH)  
 PL : 817 nm (in MeOH)



### LT-D1261 | HDITC perchlorate

1,1',3,3,3',3'-4,4',5,5'-Di-benzo-2,2'-indotricarbocyanine perchlorate

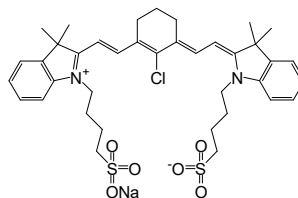
CAS No. : 23178-67-8  
 Grade : > 98% (HPLC)  
 Formula :  $C_{37}H_{37}ClN_2O_4$   
 UV : 609.15 g/mole  
 PL : 781 nm (in MeOH)



### LT-D1262 | IR-783

2-[2-[2-Chloro-3-[2-[1,3-dihydro-3,3-dimethyl-1-(4-sulfobutyl)-2H-indol-2-ylidene]-ethylidene]-1-cyclohexen-1-yl]-ethenyl]-3,3-dimethyl-1-(4-sulfobutyl)-3H-indolium hydroxide, inner salt sodium salt

CAS No. : 115970-66-6  
 Grade : > 90% (HPLC)  
 Formula :  $C_{38}H_{46}ClN_2NaO_6S_2$   
 M.W. : 749.35 g/mole  
 UV : 782 nm (in MeOH)



### LT-D1263 | IR-820

2-[2-[2-Chloro-3-[[1,3-dihydro-1,1-dimethyl-3-(4-sulfobutyl)-2H-benzo[e]indol-2-ylidene]-ethylidene]-1-cyclohexen-1-yl]-ethenyl]-1,1-dimethyl-3-(4-sulfobutyl)-1H-benzo[e]indolium hydroxide inner salt, sodium salt

CAS No. : 172616-80-7  
 Grade : > 80% (HPLC)  
 Formula :  $C_{46}H_{50}ClN_2NaO_6S_2$   
 M.W. : 849.47 g/mole  
 UV : 820 nm (in MeOH)

