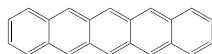


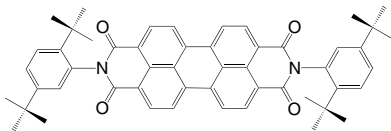
**LT-S901** | Pentacene

## Pentacene

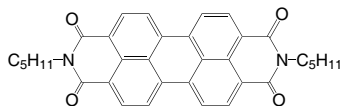
CAS No.	: 135-48-8
Grade	: Sublimed, > 99%
Formula	: C <sub>22</sub> H <sub>14</sub>
M.W.	: 278.35 g/mole
UV	: 300 nm (in CH <sub>2</sub> Cl <sub>2</sub> )
PL	: 509 nm (in CH <sub>2</sub> Cl <sub>2</sub> )
TGA	: > 240 °C (0.5% weight loss)

**LT-S902** | PDCDT*N,N'*-Bis(2,5-di-*tert*-butylphenyl)-3,4,9,10-perylene dicarboximide

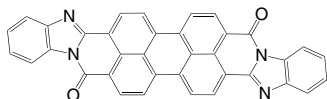
CAS No.	: 83054-80-2
Grade	: Sublimed, > 99%
Formula	: C <sub>52</sub> H <sub>50</sub> N <sub>2</sub> O <sub>4</sub>
M.W.	: 766.96 g/mole
UV	: 524 nm (in CH <sub>2</sub> Cl <sub>2</sub> )
PL	: 544, 574 nm (in CH <sub>2</sub> Cl <sub>2</sub> )
TGA	: > 350 °C (0.5% weight loss)

**LT-S904** | PenPTC*N,N'*-Dipentyl-3,4,9,10-perylene dicarboximide

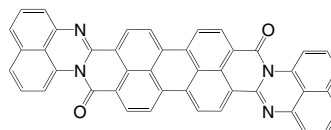
CAS No.	: 76372-75-3
Grade	: Sublimed, > 99%
Formula	: C <sub>34</sub> H <sub>30</sub> N <sub>2</sub> O <sub>4</sub>
M.W.	: 530.61 g/mole
UV	: 523 nm (in CH <sub>2</sub> Cl <sub>2</sub> )
PL	: 535, 573 nm (in CH <sub>2</sub> Cl <sub>2</sub> )
TGA	: > 350 °C (0.5% weight loss)

**LT-S918** | PTCBIBisbenzimidazo[2,1-*a*:1',2'-*b*]anthra[2,1,9-*def*:6,5,10-*d'e'f'*]diisoquinoline-10,21-dione, with *cis* isomer

CAS No.	: 79534-91-1
Grade	: Sublimed, > 99%
Formula	: C <sub>36</sub> H <sub>16</sub> N <sub>4</sub> O <sub>2</sub>
M.W.	: 536.54 g/mole
PL	: 414 nm (in CH <sub>2</sub> Cl <sub>2</sub> )
TGA	: > 420 °C (0.5% weight loss)

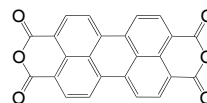
**LT-S919** | ADIDIAnthra[2'',1'',9'':4,5,6,6'',5'',10'':4',5',6']diisoquinolo[2,1-*a*:2',1'-*a'*]diperimidine-12,25-dione, with *cis* isomer

CAS No.	: 6859-32-1
Grade	: Sublimed product
Formula	: C <sub>44</sub> H <sub>20</sub> N <sub>4</sub> O <sub>2</sub>
M.W.	: 636.66 g/mole
PL	: 413 nm (in CH <sub>2</sub> Cl <sub>2</sub> )
TGA	: > 430 °C (0.5% weight loss)

**LT-S920** | PTCDA

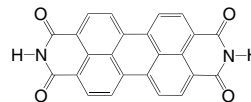
## 3,4,9,10-Perylenetetracarboxylic dianhydride

CAS No.	: 128-69-8
Grade	: Sublimed, > 99%
Formula	: C <sub>24</sub> H <sub>8</sub> O <sub>6</sub>
M.W.	: 392.32 g/mole
PL	: 413 nm (in CH <sub>2</sub> Cl <sub>2</sub> )
TGA	: > 450 °C (0.5% weight loss)

**LT-S921** | PTCDI

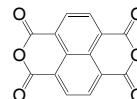
## 3,4,9,10-Perylenetetracarboxylic diimide

CAS No.	: 81-33-4
Grade	: Sublimed, > 99%
Formula	: C <sub>24</sub> H <sub>10</sub> N <sub>2</sub> O <sub>4</sub>
M.W.	: 390.55 g/mole
PL	: 413 nm (in CH <sub>2</sub> Cl <sub>2</sub> )
TGA	: > 450 °C (0.5% weight loss)

**LT-S924** | NTDA

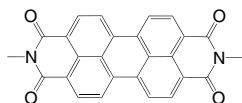
## 1,4,5,8-Naphthalenetetracarboxylic dianhydride

CAS No.	: 81-30-1
Grade	: Sublimed, > 99%
Formula	: C <sub>14</sub> H <sub>4</sub> O <sub>6</sub>
M.W.	: 268.18 g/mole
UV	: 366 nm (in CH <sub>2</sub> Cl <sub>2</sub> )
PL	: 394 nm (in CH <sub>2</sub> Cl <sub>2</sub> )
TGA	: > 270 °C (0.5% weight loss)

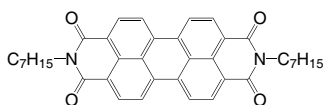


**LT-S925** | MePTC*N,N'*-Dimethyl-3,4,9,10-perylene dicarboximide

CAS No. : 5521-31-3  
 Grade : Sublimed product  
 Formula :  $C_{26}H_{14}N_2O_4$   
 M.W. : 419.40 g/mole  
 UV : 522 nm (in  $CH_2Cl_2$ )  
 PL : 571 nm (in  $CH_2Cl_2$ )  
 TGA : > 440 °C (0.5% weight loss)

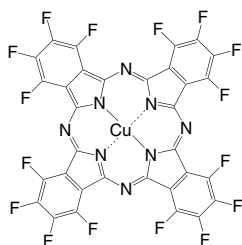
**LT-S926** | HepPTC*N,N'*-Diheptyl-3,4,9,10-perylene dicarboximide

CAS No. : 95689-91-1  
 Grade : Sublimed, > 99%  
 Formula :  $C_{38}H_{38}N_2O_4$   
 M.W. : 586.72 g/mole  
 UV : 524 nm (in  $CH_2Cl_2$ )  
 PL : 537, 571 nm (in  $CH_2Cl_2$ )  
 TGA : > 390 °C (0.5% weight loss)

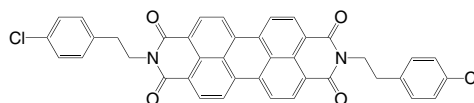
**LT-S928** | F<sub>16</sub>CuPC

Copper(II) 1,2,3,4,8,9,10,11,15,16,17,18,22,23,24,25-hexadecafluoro-29H,31H-phthalocyanine

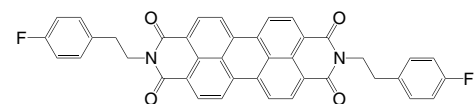
CAS No. : 14916-87-1  
 Grade : Sublimed product  
 Formula :  $C_{32}F_{16}CuN_8$   
 M.W. : 863.92 g/mole  
 UV : 690 nm (in  $CH_2Cl_2$ )

**LT-S935** | 4CIPEPTC*N,N'*-Bis[2-(4-chloro-phenyl)-ethyl]-3,4,9,10-perylene dicarboximide

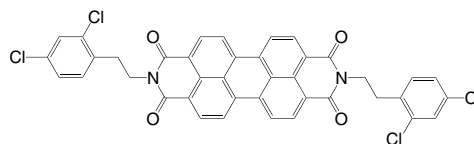
CAS No. : 215726-51-5  
 Grade : Sublimed, > 99%  
 Formula :  $C_{40}H_{24}Cl_2N_2O_4$   
 M.W. : 667.53 g/mole  
 UV : 524 nm (in  $CH_2Cl_2$ )  
 PL : 544 nm (in  $CH_2Cl_2$ )  
 TGA : > 370 °C (0.5% weight loss)

**LT-S936** | 4FPEPTC*N,N'*-Bis[2-(4-fluoro-phenyl)-ethyl]-3,4,9,10-perylene dicarboximide

CAS No. : 215726-57-1  
 Grade : Sublimed, > 99%  
 Formula :  $C_{40}H_{24}F_2N_2O_4$   
 M.W. : 634.63 g/mole  
 UV : 524 nm (in  $CH_2Cl_2$ )  
 PL : 538 nm (in  $CH_2Cl_2$ )  
 TGA : > 370 °C (0.5% weight loss)

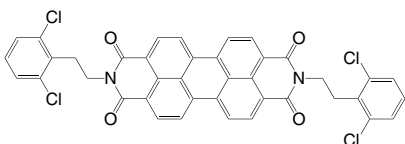
**LT-S937** | 2,4CIPEPTC*N,N'*-Bis[2-(2,4-dichloro-phenyl)-ethyl]-3,4,9,10-perylene dicarboximide

Grade : Sublimed, > 99%  
 Formula :  $C_{40}H_{22}Cl_4N_2O_4$   
 M.W. : 736.42 g/mole  
 UV : 524 nm (in  $CH_2Cl_2$ )  
 PL : 536 nm (in  $CH_2Cl_2$ )  
 TGA : > 390 °C (0.5% weight loss)

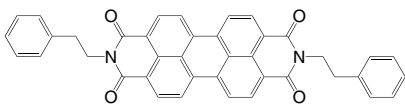


**LT-S938** | 2,6ClPEPTC*N,N'*-Bis[2-(2,6-dichloro-phenyl)-ethyl]-3,4,9,10-perylene dicarboximide

Grade : Sublimed, > 99%  
 Formula :  $C_{40}H_{22}Cl_4N_2O_4$   
 M.W. : 736.42 g/mole  
 UV : 524 nm (in  $CH_2Cl_2$ )  
 PL : 536 nm (in  $CH_2Cl_2$ )  
 TGA : > 440 °C (0.5% weight loss)

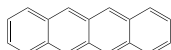
**LT-S939** | PEPTC*N,N'*-Bis(2-phenyl-ethyl)-3,4,9,10-perylene dicarboximide

CAS No. : 67075-37-0  
 Grade : Sublimed, > 99%  
 Formula :  $C_{40}H_{26}N_2O_4$   
 M.W. : 598.64 g/mole  
 UV : 524 nm (in  $CH_2Cl_2$ )  
 PL : 537 nm (in  $CH_2Cl_2$ )  
 TGA : > 390 °C (0.5% weight loss)

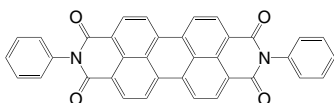
**LT-S940** | Tetracene

2,3-Benzanthracene

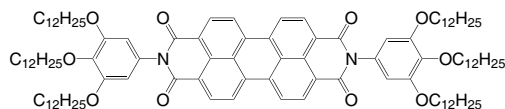
CAS No. : 92-24-0  
 Grade : Sublimed, > 99% (HPLC)  
 Formula :  $C_{18}H_{12}$   
 M.W. : 228.29 g/mole  
 UV : 277 nm (in  $CH_2Cl_2$ )  
 PL : 514 nm (in  $CH_2Cl_2$ )  
 TGA : > 180 °C (0.5% weight loss)

**LT-S941** | DP-PTCDI*N,N'*-Diphenyl-3,4,9,10-perylene dicarboximide

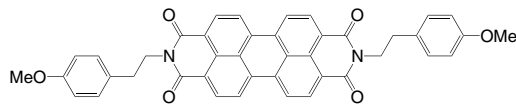
CAS No. : 128-65-4  
 Grade : Sublimed, > 99%  
 Formula :  $C_{36}H_{18}N_2O_4$   
 M.W. : 542.54 g/mole  
 UV : 481, 515 nm (in THF)  
 PL : 531 nm (in THF)  
 TGA : > 380 °C (0.5% weight loss)

**LT-S956** | PDI1*N,N'*-Bis(3,4,5-tridodecyloxyphenyl)-3,4,9,10-perylene dicarboximide

CAS No. : 351377-40-7  
 Grade : > 99% (NMR)  
 Formula :  $C_{108}H_{162}N_2O_{10}$   
 M.W. : 1648.45 g/mole  
 UV : 489, 526 nm (in  $CH_2Cl_2$ )  
 TGA : > 290 °C (0.5% weight loss)

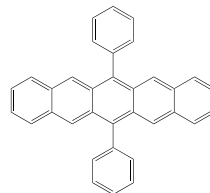
**LT-S960** | 4MeOPEPTC*N,N'*-Bis[2-(4-methoxyphenyl)-ethyl]-3,4,9,10-perylene dicarboximide

CAS No. : 119215-14-4  
 Grade : Sublimed, > 99%  
 Formula :  $C_{42}H_{30}N_2O_6$   
 M.W. : 658.70 g/mole  
 UV : 458, 524 nm (in  $CH_2Cl_2$ )  
 PL : 534 nm (in  $CH_2Cl_2$ )  
 TGA : > 370 °C (0.5% weight loss)

**LT-S968** | 6,13-DP-Penta

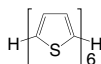
6,13-Diphenylpentacene

CAS No. : 76727-11-2  
 Grade : Sublimed, > 99%  
 Formula :  $C_{34}H_{22}$   
 M.W. : 430.54 g/mole  
 UV : 307 nm (in  $CH_2Cl_2$ )  
 PL : 447 nm (in  $CH_2Cl_2$ )  
 TGA : > 250 °C (0.5% weight loss)

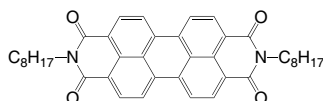


**LT-S969** |  $\alpha$ -6T $\alpha$ -Sexithiophene

CAS No.	: 88493-55-4
Grade	: Sublimed, > 99%
Formula	: $C_{24}H_{14}S_6$
M.W.	: 494.76 g/mole
UV	: 437 nm (in $CH_2Cl_2$ )
PL	: 511 nm (in $CH_2Cl_2$ )
TGA	: > 330 °C (0.5% weight loss)

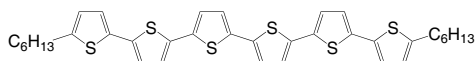
**LT-S970** | PTCDI-C<sub>8</sub>*N,N'*-Dioctyl-3,4,9,10-perylene dicarboximide

CAS No.	: 78151-58-3
Grade	: Sublimed, > 99%
Formula	: $C_{40}H_{42}N_2O_4$
M.W.	: 614.77 g/mole
UV	: 456, 524 nm (in $CH_2Cl_2$ )
PL	: 573 nm (in $CH_2Cl_2$ )
TGA	: > 390 °C (0.5% weight loss)

**LT-S972** |  $\alpha,\omega$ -DH6T

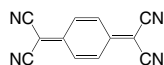
## 5,5''''-Dihexyl-2,2':5',2'':5''',2''':5''''-sexithiophene

CAS No.	: 151271-43-1
Grade	: Sublimed, > 99%
Formula	: $C_{36}H_{38}S_6$
M.W.	: 663.08 g/mole
PL	: 439 nm (in Toluene)
TGA	: > 230 °C (0.5% weight loss)

**LT-S973** | TCNQ

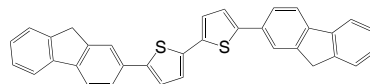
## 7,7,8,8-Tetracyanoquinodimethane

CAS No.	: 1518-16-7
Grade	: Sublimed, > 99%
Formula	: $C_{12}H_4N_4$
M.W.	: 204.19 g/mole
PL	: 259, 404 nm (in $CH_2Cl_2$ )
TGA	: > 210 °C (0.5% weight loss)

**LT-S975** | FTTF

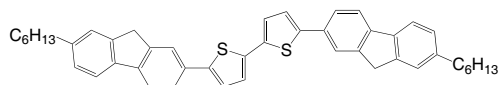
## 5,5'-Di(9H-fluoren-2-yl)-2,2'-bithiophene

CAS No.	: 369599-41-7
Grade	: Sublimed, > 99%
Formula	: $C_{34}H_{22}S_2$
M.W.	: 494.67 g/mole
PL	: 378 nm (in Toluene)
TGA	: > 200 °C (0.5% weight loss)

**LT-S976** | DH-FTTF

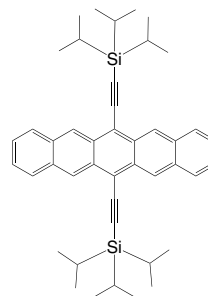
## 5,5'-Bis(7-hexyl-9H-fluoren-2-yl)-2,2'-bithiophene

CAS No.	: 369599-42-8
Grade	: Sublimed, > 99%
Formula	: $C_{46}H_{46}S_2$
M.W.	: 662.99 g/mole
UV	: 378 nm (in Toluene)
TGA	: > 200 °C (0.5% weight loss)

**LT-S977** | TIPS

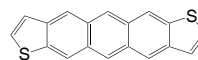
## 6,13-Bis(triisopropylsilyl)ethynyl)pentacene

CAS No.	: 373596-08-8
Grade	: > 99% (HPLC)
Formula	: $C_{44}H_{54}Si_2$
M.W.	: 639.07 g/mole
UV	: 307 nm (in $CH_2Cl_2$ )
TGA	: > 230 °C (0.5% weight loss)

**LT-S9026** | ADT

## Anthra[2,3-b:6,7-b']dithiophene

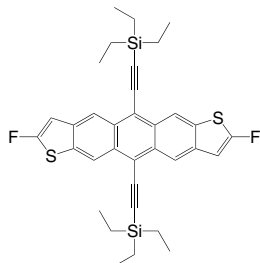
CAS No.	: 144413-58-1
Grade	: Sublimed, > 99%
Formula	: $C_{18}H_{10}S_2$
M.W.	: 290.40 g/mole
UV	: 320 nm (in $CH_2Cl_2$ )
TGA	: > 250 °C (0.5% weight loss)



**LT-S9027** | diF-TES-ADT

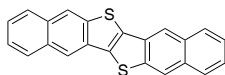
2,8-Difluoro-5,11-bis(triethylsilylethynyl)  
anthradithiophene, mixture of syn & anti isomers

CAS No. : 1015071-21-2  
Grade : > 99% (NMR)  
Formula :  $C_{34}H_{36}F_2S_2Si_2$   
M.W. : 602.95 g/mole  
TGA : > 230 °C (0.5% weight loss)

**LT-S9031** | DNTT**NEW**

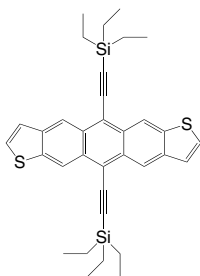
Dinaphtho[2,3-b:2',3'-f]thieno[3,2-b]thiophene

CAS No. : 935280-42-5  
Grade : Sublimed, >99%  
Formula :  $C_{22}H_{12}S_2$   
M.W. : 340.46 g/mole

**LT-S9034** | TES-ADT

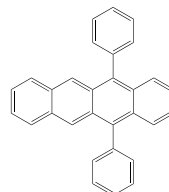
5,11-Bis(triethylsilylethynyl)anthradithiophene, mixture of syn & anti isomers

CAS No. : 851817-11-3  
Grade : > 99% (NMR)  
Formula :  $C_{34}H_{38}S_2Si_2$   
M.W. : 566.97 g/mole  
UV : 306 nm (in  $CH_2Cl_2$ )  
TGA : > 230 °C (0.5% weight loss)

**LT-S9035** | DPT

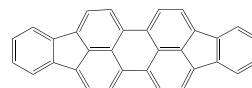
5,12-Diphenyltetracene

CAS No. : 27130-32-1  
Grade : Sublimed, > 99% (HPLC)  
Formula :  $C_{30}H_{20}$   
M.W. : 380.48 g/mole  
UV : 262, 492 nm (in  $CH_2Cl_2$ )  
TGA : > 230 °C (0.5% weight loss)

**LT-S9036** | DIP

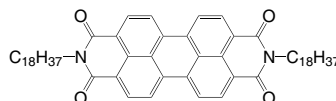
Diindeno[1,2,3-cd:1',2',3'-lm]perylene

CAS No. : 188-94-3  
Grade : Sublimed product  
Formula :  $C_{32}H_{16}$   
M.W. : 400.47 g/mole  
UV : 494, 532 nm (in  $CH_2Cl_2$ )  
TGA : > 230 °C (0.5% weight loss)

**LT-S9041** | PTCDI- $C_{18}H_{37}$ **NEW**

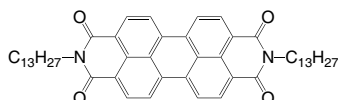
*N,N'*-Dioctadecyl-3,4,9,10-perylenedicarboximide

CAS No. : 25834-02-0  
Grade : Sublimed, > 99%  
Formula :  $C_{60}H_{82}N_2O_4$   
M.W. : 895.30 g/mole  
UV : 485, 520 nm (in Toluene)  
TGA : > 340 °C (0.5% weight loss)



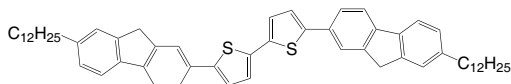
**LT-S9042** | PTCDI-C<sub>13</sub>H<sub>27</sub>*N,N'*-Ditridecyl-3,4,9,10-perylenedicarboximide

CAS No. : 95689-92-2  
 Grade : Sublimed, > 99%  
 Formula : C<sub>50</sub>H<sub>62</sub>N<sub>2</sub>O<sub>4</sub>  
 M.W. : 755.04 g/mole  
 UV : 484, 520 nm (in Toluene)  
 TGA : > 390 °C (0.5% weight loss)

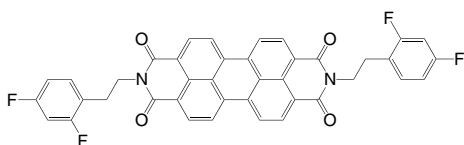
**LT-S9043** | Ddodec-FTTF

5,5'-Bis(7-dodecyl-9H-fluorene-2-yl)-2,2'-bithiophene

CAS No. : 846542-27-6  
 Grade : Sublimed, > 99%  
 Formula : C<sub>58</sub>H<sub>76</sub>S<sub>2</sub>  
 M.W. : 831.31 g/mole  
 UV : 254, 409 nm (in CH<sub>2</sub>Cl<sub>2</sub>)  
 TGA : > 350 °C (0.5% weight loss)

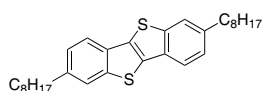
**LT-S9049** | 2,4-FPEPTC*N,N'*-Bis[2-(2,4-difluoro-phenyl)-ethyl]-3,4,9,10-perylene dicarboximide

CAS No. : 1644439-37-1  
 Grade : Sublimed, > 99%  
 Formula : C<sub>40</sub>H<sub>22</sub>F<sub>4</sub>N<sub>2</sub>O<sub>4</sub>  
 M.W. : 670.61 g/mole  
 UV : 245 nm (in CH<sub>2</sub>Cl<sub>2</sub>)  
 TGA : > 340 °C (0.5% weight loss)

**LT-S9054** | C8-BTBT **NEW**

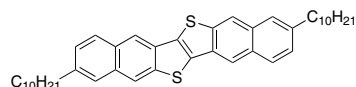
2,7-Dioctyl[1]benzothieno[3,2-b][1]benzothiophene

CAS No. : 583050-70-8  
 Grade : Sublimed, > 99%  
 Formula : C<sub>30</sub>H<sub>40</sub>S<sub>2</sub>  
 M.W. : 464.77 g/mole

**LT-S9055** | C10-DNNT **NEW**

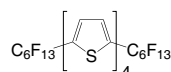
2,9-Didecylindaphtho[2,3-b:2',3'-f]thieno[3,2-b]thiophene

CAS No. : 1169932-40-4  
 Grade : Sublimed, > 99%  
 Formula : C<sub>42</sub>H<sub>52</sub>S<sub>2</sub>  
 M.W. : 620.99 g/mole

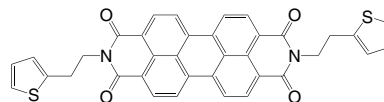
**LT-S9057** | DFH-4T

5,5'-Bis(5-perfluorohexyl)thiophen-2-yl)-2,2'-bithiophene

CAS No. : 446043-85-2  
 Grade : Sublimed, > 99%  
 Formula : C<sub>28</sub>H<sub>8</sub>F<sub>26</sub>S<sub>4</sub>  
 M.W. : 966.58 g/mole  
 UV : 259, 404 nm (in CH<sub>2</sub>Cl<sub>2</sub>)  
 TGA : > 220 °C (0.5% weight loss)

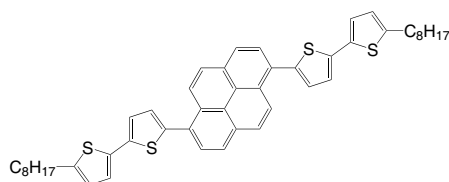
**LT-S9059** | TEPTC*N,N'*-Di(thiophen-2-yl)ethyl-3,4,9,10-perylene dicarboximide

CAS No. : 1559069-50-9  
 Grade : Sublimed, > 99%  
 Formula : C<sub>36</sub>H<sub>22</sub>N<sub>2</sub>O<sub>4</sub>S<sub>2</sub>  
 M.W. : 610.70 g/mole  
 UV : 260 nm (in CH<sub>2</sub>Cl<sub>2</sub>)  
 TGA : > 400 °C (0.5% weight loss)

**LT-S9077** | BOBTP

1,6-Bis(5'-octyl-2,2'-bithiophen-5-yl)pyrene

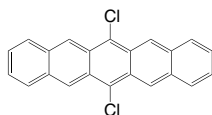
CAS No. : 1430207-54-7  
 Grade : Sublimed, > 99% (NMR)  
 Formula : C<sub>48</sub>H<sub>50</sub>S<sub>4</sub>  
 M.W. : 755.17 g/mole  
 UV : 322, 410 nm (in CHCl<sub>3</sub>)



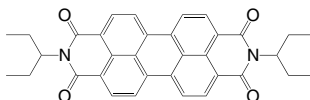
**LT-S9080** | DCIP

6,13-Dichloropentacene

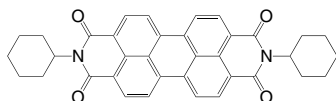
CAS No. : 59156-92-2  
 Grade : Sublimed, > 99%  
 Formula :  $C_{22}H_{12}Cl_2$   
 M.W. : 347.24 g/mole  
 TGA : > 350 °C (0.5% weight loss)

**LT-S9092** | 3PenPTC*N,N'*-Bis(ethylpropyl)perylene-3,4,9,10-tetracarboxylicdiimide

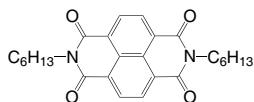
CAS No. : 110590-81-3  
 Grade : Sublimed, > 99%  
 Formula :  $C_{34}H_{30}N_2O_4$   
 M.W. : 530.61 g/mole  
 TGA : > 270 °C (0.5% weight loss)

**LT-S9093** | DCyPTC*N,N'*-Dicyclohexylperylene-3,4,9,10-tetracarboxylicdiimide

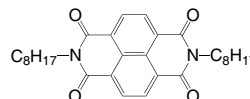
CAS No. : 41572-86-5  
 Grade : Sublimed, > 99%  
 Formula :  $C_{36}H_{30}N_2O_4$   
 M.W. : 554.63 g/mole  
 TGA : > 350 °C (0.5% weight loss)

**LT-S9094** | NTDA- $C_6H_{13}$ 2,7-Dihexylbenzo[*lmn*][3,8]phenanthroline-1,3,6,8(2*H*,7*H*)-tetraone

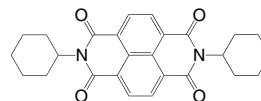
CAS No. : 23536-15-4  
 Grade : Sublimed, > 99%  
 Formula :  $C_{26}H_{30}N_2O_4$   
 M.W. : 434.53 g/mole  
 TGA : > 280 °C (0.5% weight loss)

**LT-S9095** | NTDA- $C_8H_{17}$ 2,7-Dioctylbenzo[*lmn*][3,8]phenanthroline-1,3,6,8(2*H*,7*H*)-tetraone

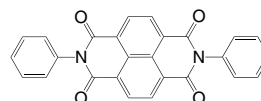
CAS No. : 34155-21-0  
 Grade : Sublimed, > 99%  
 Formula :  $C_{30}H_{38}N_2O_4$   
 M.W. : 490.63 g/mole  
 TGA : > 280 °C (0.5% weight loss)

**LT-S9096** | DCyNTDA2,7-Dicyclohexylbenzo[*lmn*][3,8]phenanthroline-1,3,6,8(2*H*,7*H*)-tetraone

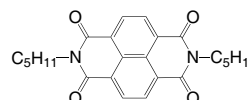
CAS No. : 173409-43-3  
 Grade : Sublimed, > 99%  
 Formula :  $C_{26}H_{26}N_2O_4$   
 M.W. : 430.50 g/mole  
 TGA : > 280 °C (0.5% weight loss)

**LT-S9097** | DPNTDA2,7-Diphenylbenzo[*lmn*][3,8]phenanthroline-1,3,6,8(2*H*,7*H*)-tetraone

CAS No. : 24259-89-0  
 Grade : Sublimed, > 99%  
 Formula :  $C_{26}H_{14}N_2O_4$   
 M.W. : 418.40 g/mole  
 TGA : > 280 °C (0.5% weight loss)

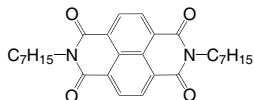
**LT-S9098** | NTDA- $C_5H_{11}$ 2,7-Dipentylbenzo[*lmn*][3,8]phenanthroline-1,3,6,8(2*H*,7*H*)-tetraone

CAS No. : 173409-41-1  
 Grade : Sublimed, > 99%  
 Formula :  $C_{24}H_{26}N_2O_4$   
 M.W. : 406.47 g/mole  
 TGA : > 240 °C (0.5% weight loss)

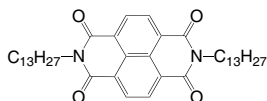


**LT-S9099** | NTDA-C<sub>7</sub>H<sub>15</sub>2,7-Diheptylbenzo[*lmn*][3,8]phenanthroline-1,3,6,8(2*H*,7*H*)-tetraone

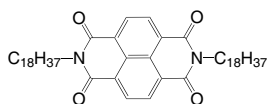
CAS No. : 698370-78-4  
 Grade : Sublimed, > 99%  
 Formula : C<sub>28</sub>H<sub>34</sub>N<sub>2</sub>O<sub>4</sub>  
 M.W. : 462.58 g/mole  
 TGA : > 280 °C (0.5% weight loss)

**LT-S9100** | NTDA-C<sub>13</sub>H<sub>27</sub>2,7-Ditridecylbenzo[*lmn*][3,8]phenanthroline-1,3,6,8(2*H*,7*H*)-tetraone

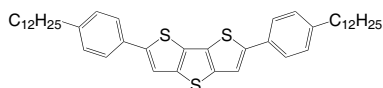
CAS No. : 1373274-00-0  
 Grade : Sublimed, > 99%  
 Formula : C<sub>40</sub>H<sub>58</sub>N<sub>2</sub>O<sub>4</sub>  
 M.W. : 630.90 g/mole  
 TGA : > 280 °C (0.5% weight loss)

**LT-S9101** | NTDA-C<sub>18</sub>H<sub>37</sub>2,7-Dioctadecylbenzo[*lmn*][3,8]phenanthroline-1,3,6,8(2*H*,7*H*)-tetraone

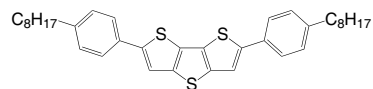
CAS No. : 144742-50-7  
 Grade : Sublimed, > 99%  
 Formula : C<sub>50</sub>H<sub>78</sub>N<sub>2</sub>O<sub>4</sub>  
 M.W. : 771.17 g/mole  
 TGA : > 280 °C (0.5% weight loss)

**LT-S9102** | DTT-122,6-Bis(4-dodecylphenyl)-dithieno[3,2-*b*:2',3'-*d'*]thiophene

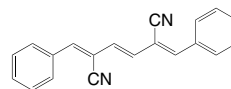
CAS No. : 1446140-70-0  
 Grade : Sublimed, > 99% (NMR)  
 Formula : C<sub>44</sub>H<sub>60</sub>S<sub>3</sub>  
 M.W. : 685.14 g/mole  
 TGA : > 280 °C (0.5% weight loss)

**LT-S9103** | DTT-82,6-Bis(4-octylphenyl)-dithieno[3,2-*b*:2',3'-*d'*]thiophene

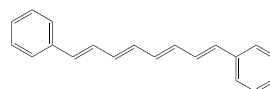
CAS No. : 1429377-95-6  
 Grade : Sublimed, > 99% (NMR)  
 Formula : C<sub>36</sub>H<sub>44</sub>S<sub>3</sub>  
 M.W. : 572.93 g/mole  
 TGA : > 270 °C (0.5% weight loss)

**LT-S9128** | Dp-triene-2,5-CN(2*Z*,3*E*,5*Z*)-2,5-Dibenzylidenehex-3-enedinitrile

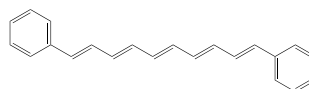
CAS No. : 1376166-32-3  
 Grade : > 99%  
 Formula : C<sub>20</sub>H<sub>14</sub>N<sub>2</sub>  
 M.W. : 282.34 g/mole

**LT-S9129** | Dp-tetraene(1*E*,3*E*,5*E*,7*E*)-1,8-Diphenylocta-1,3,5,7-tetraene

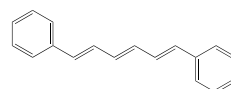
CAS No. : 3029-40-1  
 Grade : > 99%  
 Formula : C<sub>20</sub>H<sub>18</sub>  
 M.W. : 258.36 g/mole

**LT-S9130** | Dp-pentaene(1*E*,3*E*,5*E*,7*E*,9*E*)-1,10-Diphenyldeca-1,3,5,7,9-pentaene

CAS No. : 3029-41-2  
 Grade : > 99%  
 Formula : C<sub>22</sub>H<sub>20</sub>  
 M.W. : 284.39 g/mole

**LT-S9131** | Dp-triene(1*E*,3*E*,5*E*)-1,6-Diphenylhexa-1,3,5-triene

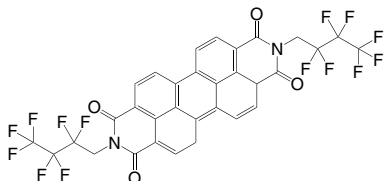
CAS No. : 1720-32-7  
 Grade : > 99%  
 Formula : C<sub>18</sub>H<sub>16</sub>  
 M.W. : 232.32 g/mole



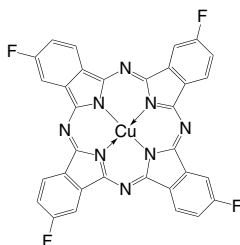


**LT-S9132** | PTCPI-CH<sub>2</sub>C<sub>3</sub>F<sub>7</sub>*N,N'*-Bis(2,2,3,3,4,4,4-heptafluorobutyl)-3,4,9,10-perylene dicarboximide

CAS No. : 1150578-28-1  
 Grade : Sublimed, > 99%  
 Formula : C<sub>32</sub>H<sub>12</sub>F<sub>14</sub>N<sub>2</sub>O<sub>4</sub>  
 M.W. : 756.44 g/mole  
 TGA : > 300 °C (0.5% weight loss)

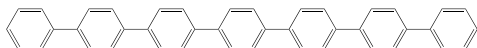
**LT-S9134** | F<sub>4</sub>CuPCCopper(II)-2,9,16,23-tetrafluoro-29*H*,31*H*-phthalocyanine

CAS No. : 65602-84-8  
 Grade : Sublimed, > 99%  
 Formula : C<sub>32</sub>H<sub>12</sub>CuF<sub>4</sub>N<sub>8</sub>  
 M.W. : 648.03 g/mole  
 TGA : > 350 °C (0.5% weight loss)

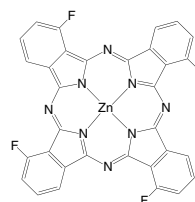
**LT-S9159** | p-Septiphenyl

p-Septiphenyl

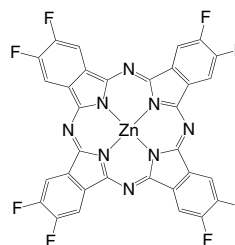
CAS No. : 70352-20-4  
 Grade : > 99%  
 Formula : C<sub>42</sub>H<sub>30</sub>  
 M.W. : 534.69 g/mole  
 TGA : > 280 °C (0.5% weight loss)

**LT-S9171** | F<sub>4</sub>ZnPCZinc(II)-1,8,15,22-tetrafluoro-29*H*,31*H*-phthalocyanine, mixture of isomers

CAS No. : 1120355-28-3  
 Grade : Sublimed, > 99%  
 Formula : C<sub>32</sub>H<sub>12</sub>F<sub>4</sub>N<sub>8</sub>Zn  
 M.W. : 649.89 g/mole  
 UV : 681 nm (in CHCl<sub>3</sub>)  
 TGA : > 300 °C (0.5% weight loss)

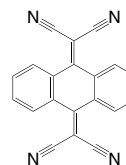
**LT-S9172** | F<sub>8</sub>ZnPCZinc(II)-2,3,9,10,16,17,23,24-octafluoro-29*H*,31*H*-phthalocyanine

CAS No. : 676519-80-5  
 Grade : Sublimed, > 99%  
 Formula : C<sub>32</sub>H<sub>8</sub>F<sub>8</sub>N<sub>8</sub>Zn  
 M.W. : 721.86 g/mole  
 UV : 338, 656 nm (in DMF)  
 TGA : > 300 °C (0.5% weight loss)

**LT-S9173** | An-PDN

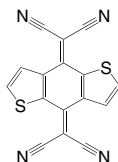
2,2'-(9,10-Anthracenediylidene)-bis-propanedinitrile

CAS No. : 70359-39-6  
 Grade : Sublimed, > 99% (HPLC)  
 Formula : C<sub>20</sub>H<sub>8</sub>N<sub>4</sub>  
 M.W. : 304.3 g/mole  
 UV : 283, 348 nm (in CHCl<sub>3</sub>)  
 TGA : > 250 °C (0.5% weight loss)



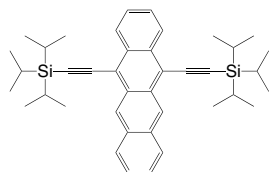
**LT-S9174** | BD-PDN2,2'-Benzo[1,2-*b*:4,5-*b'*]dithiophene-4,8-diylidene-bis-propanedinitrile

CAS No. : 109573-90-2  
 Grade : Sublimed, > 99% (HPLC)  
 Formula :  $C_{16}H_4N_4S_2$   
 M.W. : 316.36 g/mole  
 UV : 231, 438 nm (in  $CHCl_3$ )  
 TGA : > 250 °C (0.5% weight loss)

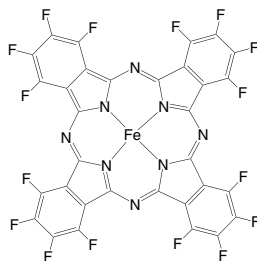
**LT-S9175** | 5,12-TIPS-Tetracene

5,12-Bis((triisopropylsilyl)ethynyl)tetracene

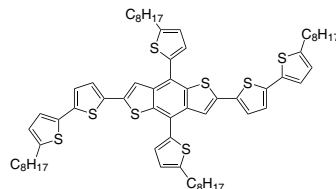
CAS No. : 628316-50-7  
 Grade : > 99% (NMR)  
 Formula :  $C_{40}H_{52}Si_2$   
 M.W. : 589.01 g/mole  
 UV : 389 nm (in  $CH_2Cl_2$ )  
 TGA : > 250 °C (0.5% weight loss)

**LT-S9177** |  $F_{16}FePC$ Iron(II) 1,2,3,4,8,9,10,11,15,16,17,18,22,23,24,25-hexadecafluoro-29*H*,31*H*-phthalocyanine

CAS No. : 23844-93-1  
 Grade : Sublimed, > 99%  
 Formula :  $C_{32}F_{16}FeN_8$   
 M.W. : 856.22 g/mole  
 UV : 333, 627 nm (in Acetone)  
 TGA : > 300 °C (0.5% weight loss)

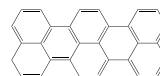
**LT-S9179** | BDT2TH2,6-Bis[(5'-octyl[2,2'-bithiophene])]{4,8-bis(5-octyl-2-thienyl)benzo[1,2-*b*:4,5-*b'*]dithiophene}

Grade : > 99% (NMR)  
 Formula :  $C_{66}H_{82}S_8$   
 M.W. : 1131.88 g/mole  
 UV : 249, 359, 442 nm (in  $CHCl_3$ )

**LT-S9211** | DTT-8

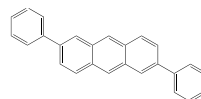
Tribenzo[de,kl,rst]pentaphene

CAS No. : 188-72-7  
 Grade : > 98% (NMR)  
 Formula :  $C_{30}H_{16}$   
 M.W. : 376.45 g/mole

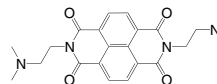
**LT-S9213** | DPA

2,6-Diphenylanthracene

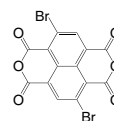
CAS No. : 95950-70-2  
 Grade : Sublimed, > 99% (HPLC)  
 Formula :  $C_{26}H_{18}$   
 M.W. : 330.42 g/mole  
 TGA : > 200 °C (0.5% weight loss)

**LT-S9259**2,7-Bis(2-(dimethylamino)ethyl)benzo[lmn][3,8]phenanthroline-1,3,6,8(2*H*,7*H*)-tetraone

CAS No. : 22291-04-9  
 Formula :  $C_{22}H_{24}N_4O_4$   
 M.W. : 408.45 g/mole

**LT-S9260**4,9-Dibromo-isochromeno[6,5,4-*def*]isochromene-1,3,6,8-tetraone

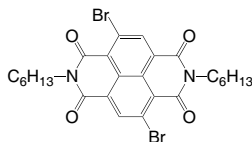
CAS No. : 83204-68-6  
 Formula :  $C_{14}H_2Br_2O_6$   
 M.W. : 425.97 g/mole



## LT-S9261

4,9-Dibromo-2,7-di(hexyl)benzo[Imn][3,8]phenanthroline-1,3,6,8-tetraone

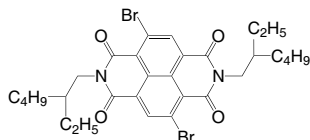
CAS No. : 1239327-73-1  
 Formula :  $C_{26}H_{28}Br_2N_2O_4$   
 M.W. : 592.32 g/mole



## LT-S9262

4,9-Dibromo-2,7-bis(2-ethylhexyl)benzo[Imn][3,8]phenanthroline-1,3,6,8(2H,7H)-tetraone

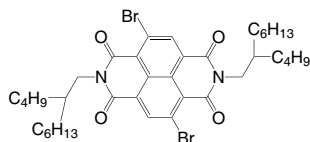
CAS No. : 1088205-02-0  
 Formula :  $C_{30}H_{36}Br_2N_2O_4$   
 M.W. : 648.43 g/mole



## LT-S9263

4,9-Dibromo-2,7-bis(2-butyloctyl)benzo[Imn][3,8]phenanthroline-1,3,6,8(2H,7H)-tetraone

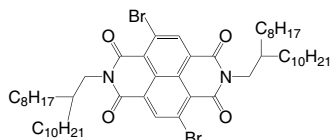
CAS No. : 1614253-96-1  
 Formula :  $C_{38}H_{52}Br_2N_2O_4$   
 M.W. : 760.64 g/mole



## LT-S9264

4,9-Dibromo-2,7-bis(2-octyldodecyl)benzo[Imn][3,8]phenanthroline-1,3,6,8(2H,7H)-tetraone

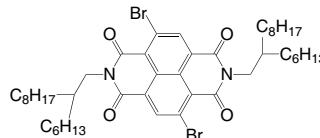
CAS No. : 1100243-35-3  
 Formula :  $C_{54}H_{84}Br_2N_2O_4$   
 M.W. : 985.06 g/mole



## LT-S9265

4,9-Dibromo-2,7-bis(2-hexyldecyl)benzo[Imn][3,8]phenanthroline-1,3,6,8(2H,7H)-tetraone

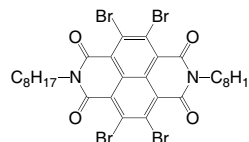
CAS No. : 1459168-68-3  
 Grade : > 98% (HPLC)  
 Formula :  $C_{46}H_{68}Br_2N_2O_4$   
 M.W. : 872.85 g/mole



## LT-S9267

4,5,9,10-Tetrabromo-2,7-dioctylbenzo[Imn][3,8]phenanthroline-1,3,6,8-tetraone

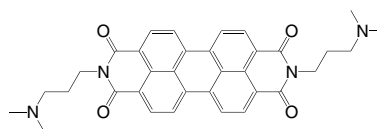
CAS No. : 954374-43-7  
 Formula :  $C_{30}H_{34}Br_4N_2O_4$   
 M.W. : 806.22 g/mole



## LT-S9268 PDIN

2,9-Bis(3-(dimethylamino)propyl)anthra[2,1,9-def:6,5,10-d'e'f']diisoquinoline-1,3,8,10(2H,9H)-tetraone

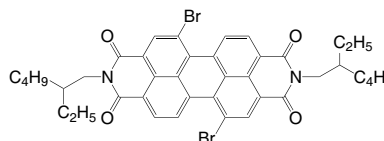
CAS No. : 117901-97-0  
 Formula :  $C_{34}H_{32}N_4O_4$   
 M.W. : 560.64 g/mole  
 HOMO : -6.05 eV  
 LUMO : -3.72 eV



## LT-S9269

5,12-Dibromo-2,9-bis(2-ethylhexyl)anthra[2,1,9-def:6,5,10-d'e'f']diisoquinoline-1,3,8,10(2H,9H)-tetraone

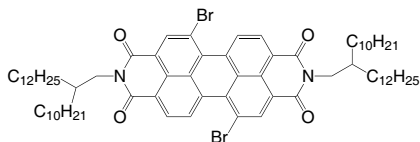
CAS No. : 851786-15-7  
 Formula :  $C_{40}H_{40}Br_2N_2O_4$   
 M.W. : 772.56 g/mole



## LT-S9270

5,12-Dibromo-2,9-bis(2-decyltetradecyl)anthra[2,1,9-def:6,5,10-d'e'f']-diisoquinoline-1,3,8,10(2H,9H)-tetraone

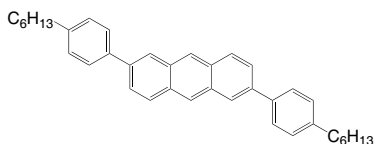
CAS No. : 909019-78-9  
 Formula :  $C_{72}H_{104}Br_2N_2O_4$   
 M.W. : 1221.42 g/mole



## LT-S9285 C6-DPA

2,6-Bis(4-hexylphenyl)anthracene

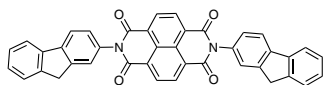
CAS No. : 1258209-99-2  
 Grade : Sublimed, > 99%  
 Formula :  $C_{38}H_{42}$   
 M.W. : 498.74 g/mole  
 TGA : > 260 °C (0.5% weight loss)



## LT-S9500 Bis-HFI-NTCDI

2,7-Di(9H-fluoren-2-yl)benzo[*mn*][3,8]-phenanthroline-1,3,6,8(2H,7H)-tetraone

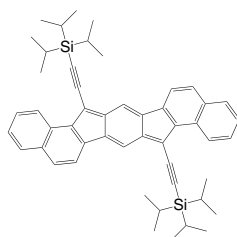
CAS No. : 1397188-84-9  
 Grade : Sublimed, > 99%  
 Formula :  $C_{40}H_{22}N_2O_4$   
 M.W. : 594.61 g/mole  
 EA : 3.5 eV  
 Conductivity :  $1.3 \times 10^{-4}$  S/cm



## LT-S9540 TIPS anti DNI

8,16-Bis((triisopropylsilyl)ethynyl)benzo[*a*]benzo[4,5]-indeno[2,1-*h*]fluorine

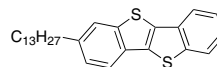
CAS No. : 2080320-19-8  
 Grade : > 99% (HPLC)  
 Formula :  $C_{50}H_{56}Si_2$   
 M.W. : 713.15 g/mole  
 Hole Mobility :  $7.1 \text{ cm}^2 / \text{Vs}$



## LT-S9541 C13-BTBT

2-tridecyl-[1]benzothieno[3,2-*b*][1]benzothiophene

CAS No. : 1198290-20-8  
 Grade : Sublimed, >99%  
 Formula :  $C_{27}H_{34}S_2$   
 M.W. : 422.69 g/mole

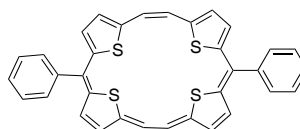


## LT-S9553 DPTTA

**NEW**

2,13-Diphenyl-23,24,25,26-tetrathiapentacyclo-[1,8,2,1,13,6,19,12,14,17]hexacos-1,3,5,7,9,11,13,15,17,19,21-undecaene

Grade : > 99%  
 Formula :  $C_{34}H_{22}S_4$   
 M.W. : 558.80 g/mole  
 UV : 319, 401 nm (Toluene)  
 HOMO : -4.42 eV  
 LUMO : -2.51 eV

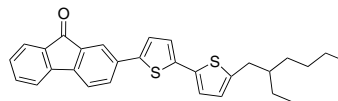


## LT-S9561

**NEW**

2-(5'-(2-Ethylhexyl)-[2,2'-bithiophen]-5-yl)-9H-fluoren-9-one

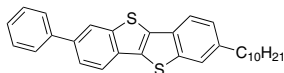
Grade : > 99%  
 Formula :  $C_{29}H_{28}OS_2$   
 M.W. : 456.66 g/mole  
 UV : 252, 302 nm (CHCl<sub>3</sub>)  
 HOMO : -5.17 eV  
 LUMO : -2.89 eV



**LT-S9587** | Ph-BTBT-10 **NEW**

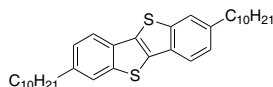
2-Decyl-7-phenyl[1]benzothieno[3,2-b][1]benzothiophene

CAS No. : 1398395-83-9  
 Grade : Sublimed, >99%  
 Formula :  $C_{30}H_{34}S_2$   
 M.W. : 458.72 g/mole

**LT-S9592** | C10-BTBT **NEW**

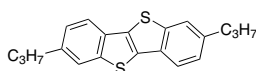
2,7-Didecyl[1]benzothieno[3,2-b][1]benzothiophene

CAS No. : 583050-71-9  
 Grade : Sublimed, >99%  
 Formula :  $C_{34}H_{48}S_2$   
 M.W. : 520.87 g/mole

**LT-S9593** | C3-BTBT **NEW**

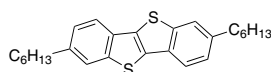
2,7-Dipropyl-4b,9b-dihydrobenzo[b]benzo[4,5]thieno[2,3-d]thiophene

CAS No. : 1198290-38-8  
 Grade : Sublimed, >99%  
 Formula :  $C_{20}H_{20}S_2$   
 M.W. : 324.5 g/mole

**LT-S9594** | C6-BTBT **NEW**

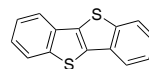
2,7-dihexyl-4b,9b-dihydrobenzo[b]benzo[4,5]thieno[2,3-d]thiophene

CAS No. : 583050-69-5  
 Grade : Sublimed, >99%  
 Formula :  $C_{26}H_{32}S_2$   
 M.W. : 408.66 g/mole

**LT-S9595** | BTBT **NEW**

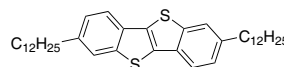
benzo[b]benzo[4,5]thieno[2,3-d]thiophene

CAS No. : 248-70-4  
 Grade : Sublimed, >99%  
 Formula :  $C_{14}H_8S_2$   
 M.W. : 240.34 g/mole

**LT-S9596** | C12-BTBT **NEW**

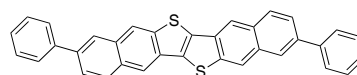
2,7-didodecylbenzo[b]benzo[4,5]thieno[2,3-d]thiophene

CAS No. : 473723-54-5  
 Grade : Sublimed, >99%  
 Formula :  $C_{38}H_{56}S_2$   
 M.W. : 576.98 g/mole

**LT-S9597** | DPh-DNTT **NEW**

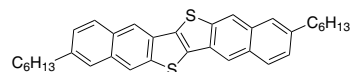
2,9-diphenyl-dinaphtho[2,3-b:2',3'-f]thieno[3,2-b]thiophene

CAS No. : 1310198-13-0  
 Grade : Sublimed, >99%  
 Formula :  $C_{34}H_{20}S_2$   
 M.W. : 492.65 g/mole

**LT-S9598** | C6-DNTT **NEW**

2,9-dihexylnaphtho[2,3-b]naphtho[2',3':4,5]thieno[2,3-d]thiophene

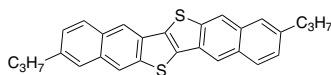
CAS No. : 1242239-89-9  
 Grade : Sublimed, >99%  
 Formula :  $C_{34}H_{36}S_2$   
 M.W. : 508.78 g/mole



**LT-S9599** | C3-DNTT **NEW**

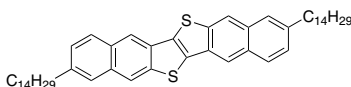
2,9-dipropylnaphtho[2,3-b]naphtho[2',3':4,5]-thieno[2,3-d]thiophene

CAS No. : 1242239-91-3  
 Grade : Sublimed, >99%  
 Formula :  $C_{28}H_{24}S_2$   
 M.W. : 424.62 g/mole

**LT-S9600** | C14-DNTT **NEW**

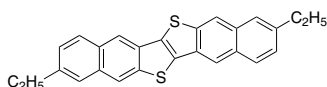
2,9-Ditetradecylnaphtho[2,3-b]naphtho[2',3':4,5]thieno[2,3-d]thiophene

CAS No. :  
 Grade : Sublimed, >99%  
 Formula :  $C_{50}H_{68}S_2$   
 M.W. : 733.2 g/mole

**LT-S9601** | C2-DNTT **NEW**

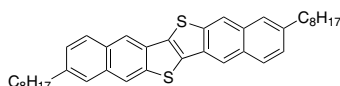
2,9-Diethylnaphtho[2,3-b]naphtho[2',3':4,5]thieno[2,3-d]thiophene

CAS No. :  
 Grade : Sublimed, >99%  
 Formula :  $C_{26}H_{20}S_2$   
 M.W. : 396.57 g/mole

**LT-S9602** | C8-DNTT **NEW**

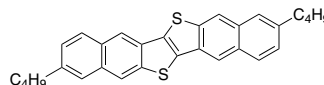
2,9-Dioctylnaphtho[2,3-b]naphtho[2',3':4,5]thieno[2,3-d]thiophene

CAS No. :  
 Grade : Sublimed, >99%  
 Formula :  $C_{38}H_{44}S_2$   
 M.W. : 564.89 g/mole

**LT-S9603** | C4-DNTT **NEW**

2,9-Dibutylnaphtho[2,3-b]naphtho[2',3':4,5]thieno[2,3-d]thiophene

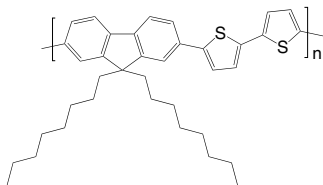
CAS No. :  
 Grade : Sublimed, >99%  
 Formula :  $C_{30}H_{28}S_2$   
 M.W. : 452.67 g/mole



## LT-S979 | F8T2

Poly[(9,9-di-n-octylfluorenyl-2,7-diyl)-alt-2,2'-bithiophene-5,5'-diyl]

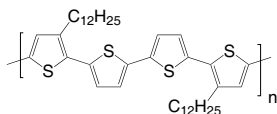
CAS No. : 210347-56-1  
 Grade : Mw > 20,000 (GPC)  
 Formula :  $(C_{37}H_{44}S_2)_n$   
 UV : 454 nm (in THF)  
 PL : 500 nm (in THF)  
 Solubility : Soluble in  $CHCl_3$ , Chlorobenzene, Dichlorobenzene



## LT-S980 | PQT-12

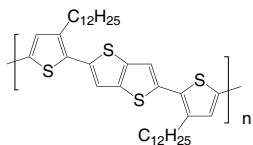
Poly[bis(3-dodecyl-2-thienyl)-2,2'-dithiophene-5,5'-diyl]

CAS No. : 827343-06-6  
 Grade : Mw = 10,000 ~ 40,000 (GPC)  
 Formula :  $(C_{40}H_{56}S_4)_n$   
 UV : 473 nm (in Toluene)  
 Solubility : > 5 mg/mL in  $CHCl_3$

LT-S981 | PBTTC- $C_{12}$ 

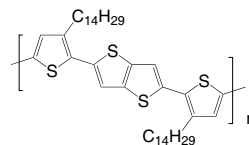
Poly[2,5-bis(3-dodecylthiophen-2-yl)thieno[3,2-b]thiophene]

CAS No. : 888491-18-7  
 Grade : Mw = 10,000~100,000 (GPC)  
 Formula :  $(C_{38}H_{54}S_4)_n$   
 UV : 460 nm (in THF)  
 PL : 557 nm (in THF)  
 Solubility : > 5 mg/mL in  $CHCl_3$

LT-S982 | PBTTC- $C_{14}$ 

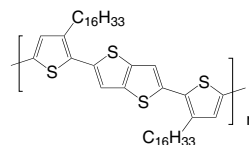
Poly[2,5-bis(3-tetradecylthiophen-2-yl)thieno[3,2-b]thiophene]

CAS No. : 888491-19-8  
 Grade : Mw > 40,000 (GPC)  
 Formula :  $(C_{42}H_{62}S_4)_n$   
 UV : 466 nm (in THF)  
 PL : 557 nm (in THF)  
 Solubility : > 5 mg/mL in  $CHCl_3$

LT-S9060 | PBTTC- $C_{16}$ 

Poly[2,5-bis(3-hexadecylthiophen-2-yl)thieno[3,2-b]thiophene]

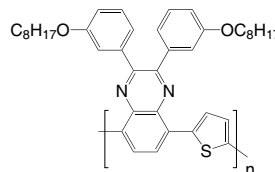
Grade : Mw > 20,000 (GPC)  
 Formula :  $(C_{46}H_{70}S_4)_n$   
 UV : 466 nm (in THF)  
 PL : 557 nm (in THF)  
 Solubility : > 5 mg/mL in  $CHCl_3$



## LT-S9091 | TQ1

Poly[2,3-bis-(3-octyloxyphenyl)quinoxaline-5,8-diyl-alt-thiophene-2,5-diyl]

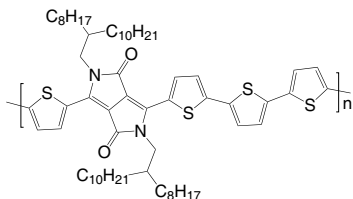
CAS No. : 565228-37-7  
 Grade : Mw > 20,000 (GPC)  
 Formula :  $(C_{40}H_{46}N_2O_2S)_n$   
 Solubility : Soluble in  $CHCl_3$ , Chlorobenzene, Dichlorobenzene



**LT-S9117** | PDQT

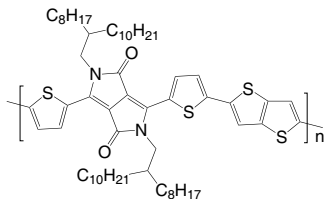
Poly(2,2'-[(2,5-bis(2-octyldodecyl)-3,6-dioxo-2,3,5,6-tetrahydropyrrolo[3,4-c]pyrrole-1,4-diyl)dithiophene-5,5'-diyl-alt-2,2'-bithiophene-5,5'-diyl])

CAS No. : 1267540-03-3  
 Grade : Mw > 30,000 (GPC)  
 Formula : (C<sub>62</sub>H<sub>90</sub>N<sub>2</sub>O<sub>2</sub>S<sub>4</sub>)<sub>n</sub>  
 UV : 810 nm (in CHCl<sub>3</sub>)  
 Solubility : Soluble in CHCl<sub>3</sub>, Chlorobenzene, Dichlorobenzene

**LT-S9118** | PDBT-co-TT

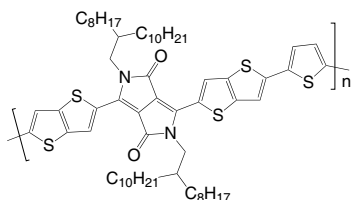
Poly(2,2'-[(2,5-bis(2-octyldodecyl)-3,6-dioxo-2,3,5,6-tetrahydropyrrolo[3,4-c]pyrrole-1,4-diyl)dithiophene-5,5'-diyl-alt-thieno[3,2-b]thiophene-2,5-diyl])

CAS No. : 1260685-65-1  
 Grade : Mw > 30,000 (GPC)  
 Formula : (C<sub>60</sub>H<sub>88</sub>N<sub>2</sub>O<sub>2</sub>S<sub>4</sub>)<sub>n</sub>  
 UV : 810 nm (in CHCl<sub>3</sub>)  
 Solubility : Soluble in CHCl<sub>3</sub>, Chlorobenzene, Dichlorobenzene

**LT-S9119** | PDPPBT

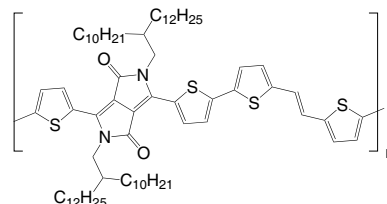
Poly(2,2'-[(2,5-bis(2-octyldodecyl)-3,6-dioxo-2,3,5,6-tetrahydropyrrolo[3,4-c]pyrrole-1,4-diyl)dithieno[3,2-b]thiophene-5,5'-diyl-alt-thiophene-2,5-diyl])

CAS No. : 1270977-98-4  
 Grade : Mw > 30,000 (GPC)  
 Formula : (C<sub>62</sub>H<sub>88</sub>N<sub>2</sub>O<sub>2</sub>S<sub>3</sub>)<sub>n</sub>  
 UV : 812 nm (in CHCl<sub>3</sub>)  
 Solubility : Soluble in CHCl<sub>3</sub>, Chlorobenzene, Dichlorobenzene

**LT-S9133** | PDVT-10

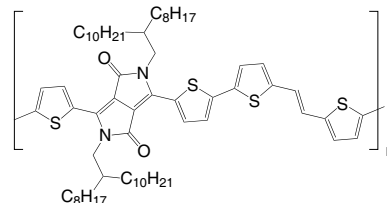
Poly(3,6-dithiophen-2-yl-2,5-di(2-decyltetradecyl)pyrrolo[3,4-c]pyrrole-1,4-dione-alt-thienylenevinylene-2,5-yl)

CAS No. : 1442682-99-6  
 Grade : Mw > 30,000 (GPC)  
 Formula : (C<sub>72</sub>H<sub>108</sub>N<sub>2</sub>O<sub>2</sub>S<sub>4</sub>)<sub>n</sub>  
 Solubility : Soluble in CHCl<sub>3</sub>, Chlorobenzene, Dichlorobenzene

**LT-S9155** | PDVT-8

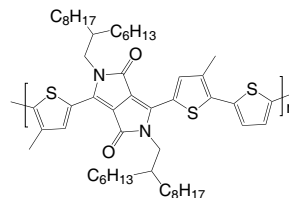
Poly(3,6-dithiophen-2-yl-2,5-di(2-octyldodecyl)pyrrolo[3,4-c]pyrrole-1,4-dione-alt-thienylenevinylene-2,5-yl)

CAS No. : 1403959-01-2  
 Grade : Mw > 20,000 (GPC)  
 Formula : (C<sub>64</sub>H<sub>92</sub>N<sub>2</sub>O<sub>2</sub>S<sub>4</sub>)<sub>n</sub>  
 Solubility : Soluble in CHCl<sub>3</sub>, Chlorobenzene, Dichlorobenzene

**LT-S9178** | PMDPP3T

Poly[[2,5-bis(2-hexyldodecyl)-2,3,5,6-tetrahydro-3,6-dioxopyrrolo[3,4-c]pyrrole-1,4-diyl]-alt-[3',3''-dimethyl-2,2':5',2''-terthiophene]-5,5'-diyl]

CAS No. : 1429119-71-0  
 Grade : Mw > 30,000 (GPC)  
 Formula : (C<sub>52</sub>H<sub>76</sub>N<sub>2</sub>O<sub>2</sub>S<sub>3</sub>)<sub>n</sub>  
 UV : 830 nm (in CHCl<sub>3</sub>)  
 Solubility : Soluble in CHCl<sub>3</sub>, Chlorobenzene, Dichlorobenzene





LT-S9591 | PZ1

**NEW**

Poly{2,2'-((2Z,2'Z)-((4,4,9,9-tetrahexadecyl-4,9-dihydro-s-indaceno[1,2-b:5,6-b']dithiophene-2,7-diyl)bis(methanylylidene)bis(3-oxo-2,3-dihydro-1H-indene-2,1-diylidene)dimalononitrile-5,5'-diyl-alt-thiophen-2,5-diyl)}

CAS No. : 2177247-65-1

Grade : Mw &gt; 10000

Formula :  $(C_{110}H_{146}N_4O_2S_3)_n$ 