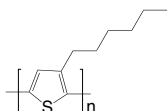


### LT-S909 | P3HT

Poly(3-hexylthiophene-2,5-diyl)

CAS No.	: 110134-47-9 / 104934-50-1
Grade	: Mw >45,000 (GPC); Electronic Grade: Regio Regular >93%
Formula	: $(C_{10}H_{14}S)_n$
UV	: 445 nm (in THF)
PL	: 564 nm (in THF)
Solubility	: Soluble in $CHCl_3$ , Chlorobenzene, Dichlorobenzene



### LT-S911 | PT

Poly(thiophene-2,5-diyl)

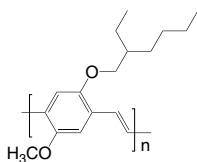
CAS No.	: 25233-34-5
Formula	: $(C_4H_2S)_n$
UV	: 427 nm (in $CH_2Cl_2$ )
PL	: 510 nm (in $CH_2Cl_2$ )



### LT-S931 | MEH-PPV

Poly[2-methoxy-5-(2-ethylhexyloxy)-1,4-phenylenevinylene]

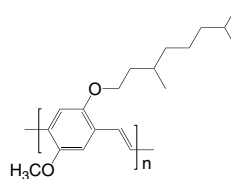
CAS No.	: 138184-36-8
Grade	: Mw >100,000 (GPC)
Formula	: $(C_{17}H_{24}O_2)_n$
UV	: 501 nm (in $CH_2Cl_2$ )
PL	: 502 nm (in $CH_2Cl_2$ )
Solubility	: Soluble in THF, $CHCl_3$ , Chlorobenzene, Dichlorobenzene



### LT-S932 | MDMO-PPV

Poly[2-methoxy-5-(3,7-dimethoxyoctyloxy)-1,4-phenylenevinylene]

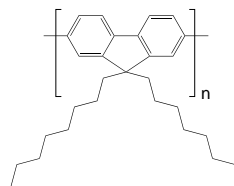
CAS No.	: 177716-59-5
Grade	: Mw >100,000 (GPC)
Formula	: $(C_{19}H_{28}O_2)_n$
UV	: 485 nm (in $CH_2Cl_2$ )
PL	: 555 nm (in $CH_2Cl_2$ )
Solubility	: Soluble in THF, $CHCl_3$ , Chlorobenzene, Dichlorobenzene



### LT-S933 | PFO

Poly(9,9-dioctylfluorenyl-2,7-diyl)

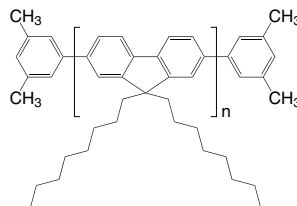
CAS No.	: 123864-00-6
Grade	: Mw =50,000 ~ 150,000 (GPC)
Formula	: $(C_{29}H_{40})_n$
UV	: 376 nm (in THF)
PL	: 426 nm (in THF)
Solubility	: Soluble in THF, $CHCl_3$ , Chlorobenzene, Dichlorobenzene



### LT-S934 | PFO-DMP

Poly(9,9-dioctylfluorenyl-2,7-diyl) end capped with dimethylphenyl

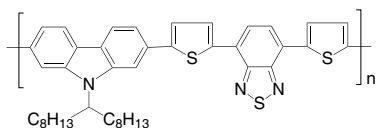
CAS No.	: 874816-14-5
Grade	: Mw =50,000 ~ 150,000 (GPC)
Formula	: $C_{16}H_{18}(C_{29}H_{40})_n$
UV	: 368 nm (in THF)
PL	: 421 nm (in THF)
Solubility	: Soluble in THF, $CHCl_3$ , Chlorobenzene, Dichlorobenzene



### LT-S948 | PCDTBT

Poly[*N*-9'-heptadecanyl-2,7-carbazole-*alt*-5,5-(4',7'-di-2-thienyl-2',1',3'-benzothiadiazole)]

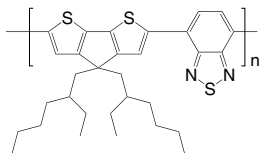
CAS No. : 958261-50-2  
 Grade : Mw = 20,000 ~ 100,000 (GPC)  
 Formula : (C<sub>43</sub>H<sub>47</sub>N<sub>3</sub>S<sub>3</sub>)<sub>n</sub>  
 UV : 390, 554 nm (in THF)  
 PL : 639 nm (in THF)  
 Solubility : >5 mg/mL in CHCl<sub>3</sub>



### LT-S949 | PCPDTBT

Poly[2,6-(4,4-bis-(2-ethylhexyl)-4*H*-cyclopenta[2,1-*b*:3,4-*b'*]-dithiophene)-*alt*-4,7-(2,1,3-benzothiadiazole)]

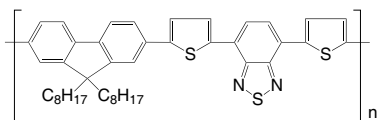
CAS No. : 920515-34-0  
 Grade : Mw = 7,000 ~ 20,000 (GPC)  
 Formula : (C<sub>31</sub>H<sub>38</sub>N<sub>2</sub>S<sub>3</sub>)<sub>n</sub>  
 UV : 695 nm (in THF)  
 PL : 564 nm (in THF)  
 Solubility : Soluble in CHCl<sub>3</sub>, Chlorobenzene, Dichlorobenzene



### LT-S950 | PFOBT / PFODBT

Poly[2,7-(9,9-di-octyl-fluorene)-*alt*-4,7-bis(thiophen-2-yl)benzo-2,1,3-thiadiazole]

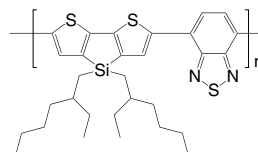
CAS No. : 782469-77-6  
 Grade : Mw = 10,000 ~ 50,000 (GPC)  
 Formula : (C<sub>43</sub>H<sub>46</sub>N<sub>2</sub>S<sub>3</sub>)<sub>n</sub>  
 UV : 523 nm (in CH<sub>2</sub>Cl<sub>2</sub>)  
 PL : 630 nm (in CH<sub>2</sub>Cl<sub>2</sub>)  
 Solubility : Soluble in CHCl<sub>3</sub>, Chlorobenzene, Dichlorobenzene



### LT-S951 | PSBTBT

Poly[2,6-(4,4'-bis(2-ethylhexyl)dithieno[3,2-*b*:2',3'-*d'*]silole)-*alt*-4,7-(2,1,3-benzothiadiazole)]

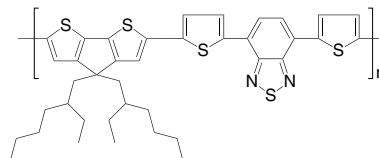
CAS No. : 1089687-02-4  
 Grade : Mw = 10,000 ~ 30,000 (GPC)  
 Formula : (C<sub>30</sub>H<sub>38</sub>N<sub>2</sub>S<sub>3</sub>Si)<sub>n</sub>  
 UV : 652 nm (in CH<sub>2</sub>Cl<sub>2</sub>)  
 Solubility : Soluble in CHCl<sub>3</sub>, Chlorobenzene, Dichlorobenzene



### LT-S953 | PCPDTTBT

Poly[2,6-(4,4-bis(2-ethylhexyl)-4*H*-cyclopenta-[2,1-*b*:3,4-*b'*]-dithiophene)-*alt*-4,7-bis(thiophen-2-yl)benzo-2,1,3-thiadiazole]

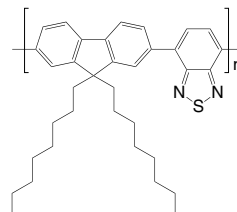
CAS No. : 1035681-83-4  
 Grade : Mw = 8,000 ~ 20,000 (GPC)  
 Formula : (C<sub>39</sub>H<sub>42</sub>N<sub>2</sub>S<sub>5</sub>)<sub>n</sub>  
 UV : 523 nm (in CH<sub>2</sub>Cl<sub>2</sub>)  
 PL : 749 nm (in CH<sub>2</sub>Cl<sub>2</sub>)  
 Solubility : Soluble in CHCl<sub>3</sub>, Chlorobenzene, Dichlorobenzene



### LT-S957 | F8BT

Poly[(9,9-dioctylfluorenyl-2,7-diyl)-*alt*-(benzo[2,1,3]thiadiazol-4,7-diyl)]

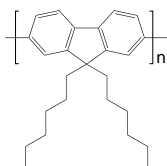
CAS No. : 210347-52-7  
 Grade : Mw > 20,000 (GPC)  
 Formula : (C<sub>35</sub>H<sub>42</sub>N<sub>2</sub>S)<sub>n</sub>  
 UV : 453 nm (in THF)  
 PL : 534 nm (in THF)  
 Solubility : Soluble in THF, CHCl<sub>3</sub>, Chlorobenzene, Dichlorobenzene



## LT-S958 | PHF

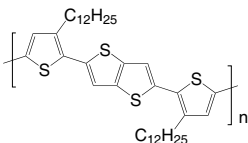
Poly[9,9-dihexylfluorenyl-2,7-diyl]

CAS No. : 201807-75-2  
 Grade : Mw = 30,000~100,000 (GPC)  
 Formula : (C<sub>25</sub>H<sub>32</sub>)<sub>n</sub>  
 UV : 389 nm (in THF)  
 PL : 418 nm (in THF)  
 Solubility : Soluble in THF, CHCl<sub>3</sub>, Chlorobenzene, Dichlorobenzene

LT-S981 | PBTTT-C<sub>12</sub>

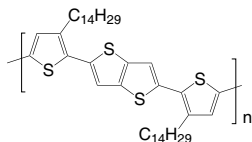
Poly[2,5-bis(3-dodecylthiophen-2-yl)thieno[3,2-b]thiophene]

CAS No. : 888491-18-7  
 Grade : Mw = 10,000~100,000 (GPC)  
 Formula : (C<sub>38</sub>H<sub>54</sub>S<sub>4</sub>)<sub>n</sub>  
 UV : 460 nm (in THF)  
 PL : 557 nm (in THF)  
 Solubility : >5 mg/mL in CHCl<sub>3</sub>

LT-S982 | PBTTT-C<sub>14</sub>

Poly[2,5-bis(3-tetradecylthiophen-2-yl)thieno[3,2-b]thiophene]

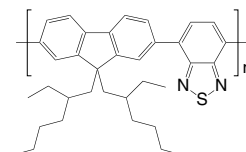
CAS No. : 888491-19-8  
 Grade : Mw = 10,000~100,000 (GPC)  
 Formula : (C<sub>42</sub>H<sub>62</sub>S<sub>4</sub>)<sub>n</sub>  
 UV : 466 nm (in THF)  
 PL : 557 nm (in THF)  
 Solubility : >5 mg/mL in CHCl<sub>3</sub>



## LT-S9003 | F2EHTB

Poly[(9,9-bis(2-ethylhexyl)fluorenyl-2,7-diyl)-*alt*-(benzo[2,1,3]thiadiazol-4,7-diyl)]

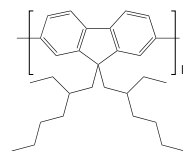
CAS No. : 1379051-13-4  
 Grade : Mw = 10,000 ~ 50,000 (GPC)  
 Formula : (C<sub>35</sub>H<sub>42</sub>N<sub>2</sub>S)<sub>n</sub>  
 UV : 453 nm (in THF)  
 PL : 645 nm (in THF)  
 Solubility : Soluble in CHCl<sub>3</sub>, Chlorobenzene, Dichlorobenzene



## LT-S9004 | PF2EH

Poly[9,9-bis(2-ethylhexyl)fluorenyl-2,7-diyl]

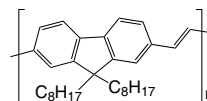
CAS No. : 188201-16-3  
 Grade : Mw > 20,000 (GPC)  
 Formula : (C<sub>29</sub>H<sub>40</sub>)<sub>n</sub>  
 UV : 389 nm (in THF)  
 PL : 418 nm (in THF)  
 Solubility : Soluble in THF, CHCl<sub>3</sub>, Chlorobenzene, Dichlorobenzene



## LT-S9006

Poly[(9,9-dioctyl-9H-fluorene-2,7-diyl)-(1E)-1,2-ethene-diyl]

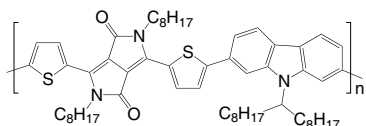
CAS No. : 360068-36-6  
 Grade : Mw > 20,000 (GPC)  
 Formula : (C<sub>31</sub>H<sub>42</sub>)<sub>n</sub>  
 UV : 455 nm (in CH<sub>2</sub>Cl<sub>2</sub>)  
 Solubility : Soluble in CHCl<sub>3</sub>, Chlorobenzene, Dichlorobenzene



**LT-S9032** | PCBTDPD

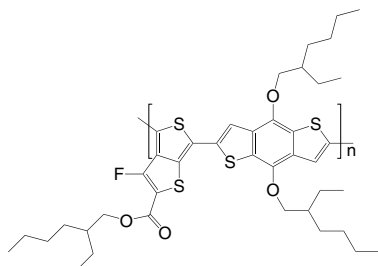
Poly[*N*-9'-heptadecanyl-2,7-carbazole-*alt*-3,6-bis(thiophen-5-yl)-2,5-dioctyl-2,5-dihydropyrrolo[3,4-*c*]pyrrole-1,4-dione]

CAS No. : 1147374-60-4  
 Grade : Mw > 10,000 (GPC)  
 Formula : (C<sub>59</sub>H<sub>81</sub>N<sub>3</sub>O<sub>2</sub>S<sub>2</sub>)<sub>n</sub>  
 UV : 647 nm (in CH<sub>2</sub>Cl<sub>2</sub>)  
 Solubility : Soluble in CHCl<sub>3</sub>, Chlorobenzene, Dichlorobenzene

**LT-S9050** | PTB7

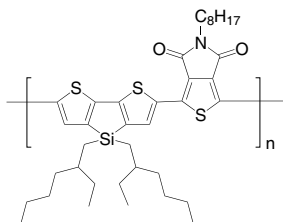
Poly(4,8-bis[(2-ethylhexyl)oxy]benzo[1,2-*b*:4,5-*b'*]dithiophene-2,6-diyl-*alt*-3-fluoro-2-[(2-ethylhexyl)carbonyl]thieno[3,4-*b*]thiophene-4,6-diyl)

CAS No. : 1266549-31-8  
 Grade : Mw > 20,000 (GPC)  
 Formula : (C<sub>41</sub>H<sub>53</sub>FO<sub>4</sub>S<sub>4</sub>)<sub>n</sub>  
 UV : 670 nm (in CH<sub>2</sub>Cl<sub>2</sub>)  
 Solubility : Soluble in CHCl<sub>3</sub>, Chlorobenzene, Dichlorobenzene

**LT-S9066** | PDTSTPD

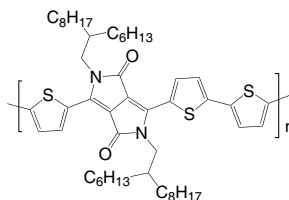
Poly[2,6-(4,4'-bis(ethylhexyl)dithieno[3,2-*b*:2',3'-*d*]silole-*alt*-(1,3-(5-octyl-4*H*-thieno[3,4-*c*]pyrrole-4,6(5*H*)-dione))]

CAS No. : 1279109-93-1  
 Grade : Mw = 7,000 ~ 30,000 (GPC)  
 Formula : (C<sub>38</sub>H<sub>53</sub>NO<sub>2</sub>S<sub>3</sub>Si)<sub>n</sub>  
 UV : 614, 670 nm (film)  
 Solubility : Soluble in CHCl<sub>3</sub>, Chlorobenzene, Dichlorobenzene

**LT-S9109** | PDPPP3T

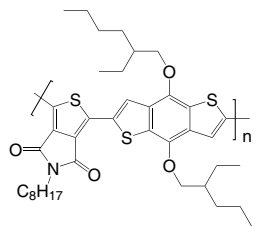
Poly[2,2'-[(2,5-bis(2-hexyldecyl)-3,6-dioxo-2,3,5,6-tetrahydropyrrolo[3,4-*c*]pyrrole-1,4-diyl)dithiophene]-5,5'-diyl-*alt*-thiophen-2,5-diyl]

CAS No. : 1198291-01-8  
 Grade : Mw > 30,000 (GPC)  
 Formula : (C<sub>50</sub>H<sub>72</sub>N<sub>2</sub>O<sub>2</sub>S<sub>3</sub>)<sub>n</sub>  
 UV : 830 nm (in CHCl<sub>3</sub>)  
 Solubility : Soluble in CHCl<sub>3</sub>, Chlorobenzene, Dichlorobenzene

**LT-S9111** | PBDTTPD

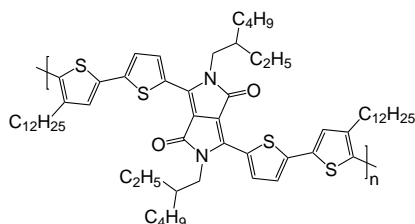
Poly(4,8-bis[(2-ethylhexyl)oxy]benzo[1,2-*b*:4,5-*b'*]dithiophene-2,6-diyl-*alt*-(1,3-(5-octyl-4*H*-thieno[3,4-*c*]pyrrole-4,6(5*H*)-dione))]

CAS No. : 1223479-75-1  
 Grade : Mw > 30,000 (GPC)  
 Formula : (C<sub>40</sub>H<sub>53</sub>NO<sub>4</sub>S<sub>3</sub>)<sub>n</sub>  
 UV : 610 nm (in CHCl<sub>3</sub>)  
 Solubility : Soluble in CHCl<sub>3</sub>, Chlorobenzene, Dichlorobenzene

**LT-S9112** | pBBTDPD2

Poly[3,6-bis(4'-dodecyl[2,2'-bithiophen]-5-yl)-2,5-bis(2-ethylhexyl)-2,5-dihydropyrrolo[3,4-*c*]pyrrole-1,4-dione]

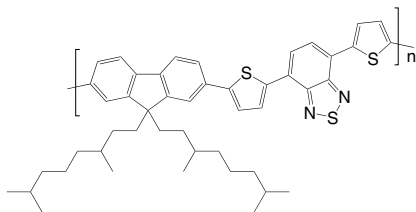
CAS No. : 1002094-22-5  
 Grade : Mw > 30,000 (GPC)  
 Formula : (C<sub>62</sub>H<sub>90</sub>N<sub>2</sub>O<sub>2</sub>S<sub>4</sub>)<sub>n</sub>  
 UV : 650 nm (in CHCl<sub>3</sub>)  
 Solubility : Soluble in CHCl<sub>3</sub>, Chlorobenzene, Dichlorobenzene



### LT-S9113 | BisDMO-PFDTBT

Poly([2,7-(9,9-bis(3,7-dimethyloctyl)fluorene)]-*alt*-[5,5-(4,7-di-2'-thienyl-2,1,3-benzothiadiazole)])

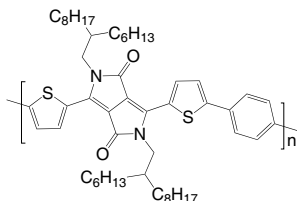
CAS No. : 1204005-82-2  
 Grade : Mw > 10,000 (GPC)  
 Formula : (C<sub>47</sub>H<sub>54</sub>N<sub>2</sub>S<sub>3</sub>)<sub>n</sub>  
 UV : 560 nm (in CHCl<sub>3</sub>)  
 Solubility : Soluble in CHCl<sub>3</sub>, Chlorobenzene, Dichlorobenzene



### LT-S9114 | PDPPTPT

Poly(2,2'-[(2,5-bis(2-hexyldecyl)-3,6-dioxo-2,3,5,6-tetrahydropyrrolo[3,4-c]pyrrole-1,4-diyl)]dithiophene-5,5'-diyl-*alt*-benzen-1,4-diyl)

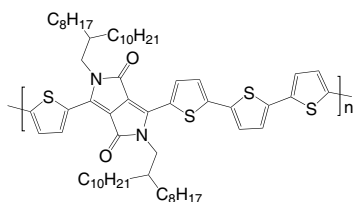
CAS No. : 1255939-39-9  
 Grade : Mw > 20,000 (GPC)  
 Formula : (C<sub>52</sub>H<sub>74</sub>N<sub>2</sub>O<sub>2</sub>S<sub>2</sub>)<sub>n</sub>  
 UV : 628 nm (in CHCl<sub>3</sub>)  
 Solubility : Soluble in CHCl<sub>3</sub>, Chlorobenzene, Dichlorobenzene



### LT-S9117 | PDQT

Poly(2,2'-[(2,5-bis(2-octyldodecyl)-3,6-dioxo-2,3,5,6-tetrahydropyrrolo[3,4-c]pyrrole-1,4-diyl)]dithiophene-5,5'-diyl-*alt*-2,2'-bithiophene-5,5'-diyl)

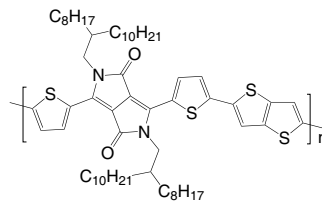
CAS No. : 1267540-03-3  
 Grade : Mw > 30,000 (GPC)  
 Formula : (C<sub>62</sub>H<sub>90</sub>N<sub>2</sub>O<sub>2</sub>S<sub>4</sub>)<sub>n</sub>  
 UV : 810 nm (in CHCl<sub>3</sub>)  
 Solubility : Soluble in CHCl<sub>3</sub>, Chlorobenzene, Dichlorobenzene



### LT-S9118 | PDBT-co-TT

Poly(2,2'-[(2,5-bis(2-octyldodecyl)-3,6-dioxo-2,3,5,6-tetrahydropyrrolo[3,4-c]pyrrole-1,4-diyl)]dithiophene-5,5'-diyl-*alt*-thieno[3,2-*b*]thiophen-2,5-diyl)

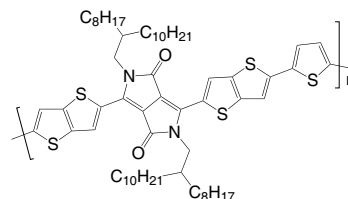
CAS No. : 1260685-65-1  
 Grade : Mw > 30,000 (GPC)  
 Formula : (C<sub>60</sub>H<sub>88</sub>N<sub>2</sub>O<sub>2</sub>S<sub>4</sub>)<sub>n</sub>  
 UV : 810 nm (in CHCl<sub>3</sub>)  
 Solubility : Soluble in CHCl<sub>3</sub>, Chlorobenzene, Dichlorobenzene



### LT-S9119 | PDPPBT

Poly(2,2'-[(2,5-bis(2-octyldodecyl)-3,6-dioxo-2,3,5,6-tetrahydropyrrolo[3,4-c]pyrrole-1,4-diyl)]dithiophene-5,5'-diyl-*alt*-thiophen-2,5-diyl)

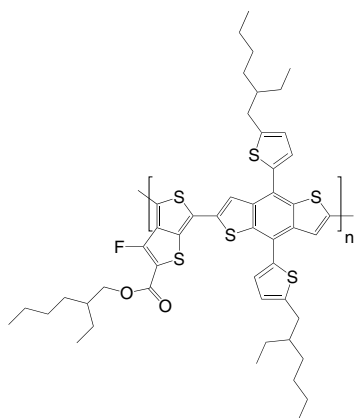
CAS No. : 1270977-98-4  
 Grade : Mw > 30,000 (GPC)  
 Formula : (C<sub>62</sub>H<sub>88</sub>N<sub>2</sub>O<sub>2</sub>S<sub>5</sub>)<sub>n</sub>  
 UV : 812 nm (in CHCl<sub>3</sub>)  
 Solubility : Soluble in CHCl<sub>3</sub>, Chlorobenzene, Dichlorobenzene



## LT-S9139 | PTB7-Th

Poly[4,8-bis[5-(2-ethylhexyl)thiophen-2-yl]benzo[1,2-b:4,5-b']-dithiophene-2,6-diyl-*alt*-3-fluoro-2-[(2-ethylhexyl)carbonyl]-thieno[3,4-*b*]thiophene-4,6-diyl]

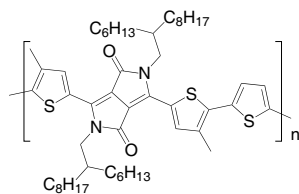
CAS No. : 1469791-66-9  
 Grade : Mw = 10,000~100,000 (GPC)  
 Formula : (C<sub>49</sub>H<sub>57</sub>FO<sub>2</sub>S<sub>6</sub>)<sub>n</sub>  
 UV : 695 nm (in CHCl<sub>3</sub>)  
 Solubility : >5 mg/mL in CHCl<sub>3</sub>



## LT-S9178 | PMDPP3T

Poly[[2,5-bis(2-hexyldecyl)-2,3,5,6-tetrahydro-3,6-dioxopyrrolo[3,4-*c*]pyrrole-1,4-diyl]-*alt*-[3',3''-dimethyl-2,2':5',2''-terthiophene]-5,5''-diyl]

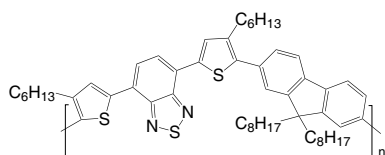
CAS No. : 1429119-71-0  
 Grade : Mw >30,000 (GPC)  
 Formula : (C<sub>52</sub>H<sub>76</sub>N<sub>2</sub>O<sub>2</sub>S<sub>3</sub>)<sub>n</sub>  
 UV : 830 nm (in CHCl<sub>3</sub>)  
 Solubility : Soluble in CHCl<sub>3</sub>, Chlorobenzene, Dichlorobenzene



## LT-S9210 | F8TBT

4-(5-(9,9-Dioctyl-9H-fluoren-2-yl)-4-hexylthiophen-2-yl)-7-(4-hexylthiophen-2-yl)benzo[*c*][1,2,5]thiadiazole

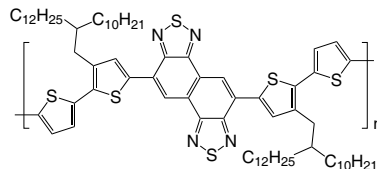
CAS No. : 891911-18-5  
 Grade : Mw >5,000 (GPC)  
 Formula : (C<sub>55</sub>H<sub>70</sub>N<sub>2</sub>S<sub>3</sub>)<sub>n</sub>



## LT-S9271 | PNTz4T

Poly[naphtho[1,2-*c*:5,6-*c'*]bis[1,2,5]thiadiazole-5,10-diyl[3,3'''-bis(2-decyltetradecyl)[2,2':5',2'':5'',2'''-quaterthiophene]-5,5'''-diyl]]

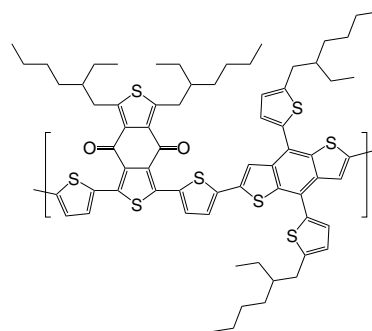
CAS No. : 1357999-94-0  
 Grade : Mw >30,000 (GPC)  
 Formula : (C<sub>74</sub>H<sub>106</sub>N<sub>4</sub>S<sub>6</sub>)<sub>n</sub>  
 UV : 725 nm (film)



## LT-S9273 | PBDB-T

Poly[[4,8-bis[5-(2-ethylhexyl)-2-thienyl]benzo[1,2-*b*:4,5-*b'*]dithiophene-2,6-diyl]-2,5-thiophenediyl[5,7-bis(2-ethylhexyl)-4,8-dioxo-4H,8H-benzo[1,2-*c*:4,5-*c'*]dithiophene-1,3-diyl]]

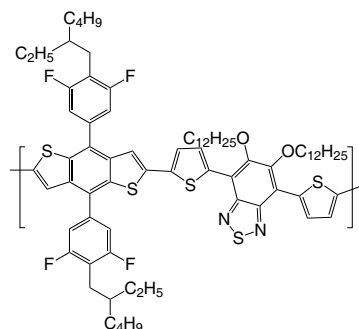
CAS No. : 1415929-80-4  
 Grade : Mw >10,000 (GPC)  
 Formula : (C<sub>68</sub>H<sub>78</sub>O<sub>2</sub>S<sub>8</sub>)<sub>n</sub>



## LT-S9278 | PTFBDT-BZS

Poly[[5,6-bis(dodecyloxy)-2,1,3-benzothiadiazole-4,7-diyl]-2,5-thiophenediyl[4,8-bis[4-(2-ethylhexyl)-3,5-difluorophenyl]benzo[1,2-*b*:4,5-*b'*]dithiophene-2,6-diyl]-2,5-thiophenediyl]

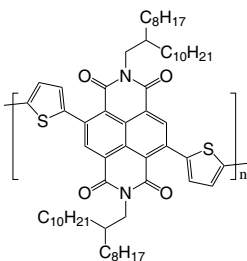
CAS No. : 1840869-86-4  
 Grade : Mw >20,000 (GPC)  
 Formula : (C<sub>76</sub>H<sub>94</sub>F<sub>4</sub>N<sub>2</sub>O<sub>2</sub>S<sub>5</sub>)<sub>n</sub>  
 UV : 414, 542 nm (in DCB)



### LT-S9282 | P(NDI2OD-T2)

Poly[[1,2,3,6,7,8-hexahydro-2,7-bis(2-octyldodecyl)-1,3,6,8-dioxobenzo[Imn][3,8]phenanthroline-4,9-diyl][2,2'-bithiophene]-5,5'-diyl]

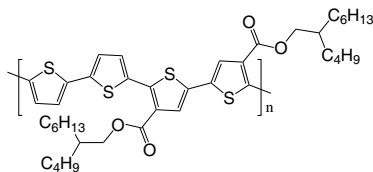
CAS No. : 1100243-40-0  
 Grade : Mw > 10,000 (GPC)  
 Formula : (C<sub>62</sub>H<sub>88</sub>N<sub>2</sub>O<sub>4</sub>S<sub>2</sub>)<sub>n</sub>



### LT-S9288 | PDCBT

Poly[[2,2'""-bis[[2-butyl(octyl)oxy]carbonyl][2,2':5':2'':5'""-quaterthiophene]-5,5'""-diyl]

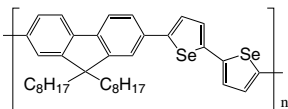
CAS No. : 1609536-17-5  
 Grade : MW > 10,000 (GPC)  
 Formula : (C<sub>42</sub>H<sub>56</sub>O<sub>4</sub>S<sub>4</sub>)<sub>n</sub>  
 UV : 551 nm (film)



### LT-S9420 | F8Se2

Poly[[2,2'-biselenophene]-5,5'-diyl(9,9-dioctyl-9H-fluorene-2,7-diyl)]

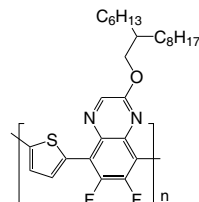
CAS No. : 898233-56-2  
 Formula : (C<sub>37</sub>H<sub>44</sub>Se<sub>2</sub>)<sub>n</sub>



### LT-S9435 | PTQ10

Poly[(thiophene)-alt-(6,7-difluoro-2-(2-hexyldodecyloxy)quinoxaline)]

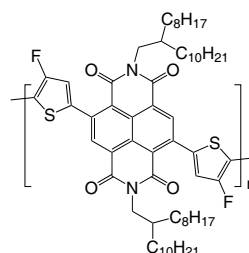
CAS No. : 2270233-86-6  
 Grade : Mw > 10,000 (GPC)  
 Formula : (C<sub>28</sub>H<sub>36</sub>F<sub>2</sub>N<sub>2</sub>O<sub>2</sub>S)<sub>n</sub>  
 UV : A strong absorption from 450 to 620 nm (in CHCl<sub>3</sub> and film)



### LT-S9449 | P(NDI2OD-2FT)

Poly[[1,2,3,6,7,8-hexahydro-2,7-bis(2-octyldodecyl)-1,3,6,8-tetraoxobenzo[Imn][3,8]phenanthroline-4,9-diyl]-(3,3'-difluoro[2,2'-bithiophene]-5,5'-diyl)]

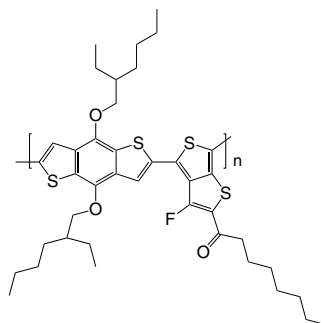
CAS No. : 1773524-46-1  
 Grade : Mw > 10,000(GPC)  
 Formula : (C<sub>62</sub>H<sub>86</sub>F<sub>2</sub>N<sub>2</sub>O<sub>4</sub>S<sub>2</sub>)<sub>n</sub>  
 Solubility : Soluble in CHCl<sub>3</sub>, Chlorobenzene, Dichlorobenzene



### LT-S9452 | PBDTTT-CF

Poly[[4,8-bis[(2-ethylhexyl)oxy]benzo[1,2-b:4,5-b']-dithiophene-2,6-diyl][3-fluoro-2-(1-oxooctyl)thieno[3,4-b]thiophenediyl]]

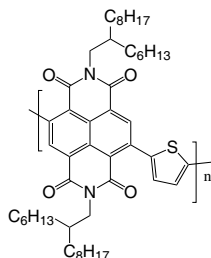
CAS No. : 1379592-65-0  
 Grade : Mw > 50,000 (GPC)  
 Formula : (C<sub>40</sub>H<sub>51</sub>FO<sub>3</sub>S<sub>4</sub>)<sub>n</sub>



**LT-S9454** | PNDI(2HD)T

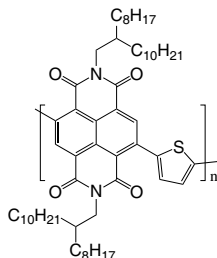
Poly[[N,N'-bis(2-hexyldodecyl)naphthalene-1,4,5,8-bis(dicarboximide)-2,6-diyl]-alt-2,5-thiophene]

CAS No. : 1675973-74-6  
 Grade : Mw > 10,000 (GPC)  
 Formula : (C<sub>50</sub>H<sub>70</sub>N<sub>2</sub>O<sub>4</sub>S)<sub>n</sub>  
 Solubility : Soluble in CHCl<sub>3</sub>, Chlorobenzene, Dichlorobenzene

**LT-S9455** | PNDI(2OD)T

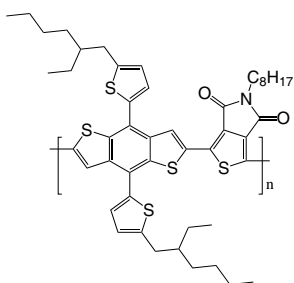
Poly[[1,2,3,6,7,8-hexahydro-2,7-bis(2-octyldodecyl)-1,3,6,8-tetraoxobenzo[Imn][3,8]phenanthroline-4,9-diyl]-2,5-thiophenediyl]

CAS No. : 1236111-76-4  
 Grade : Mw > 10,000 (GPC)  
 Formula : (C<sub>58</sub>H<sub>86</sub>N<sub>2</sub>O<sub>4</sub>S)<sub>n</sub>  
 Solubility : Soluble in CHCl<sub>3</sub>, Chlorobenzene, Dichlorobenzene

**LT-S9456** | PBDT-T8-TPD

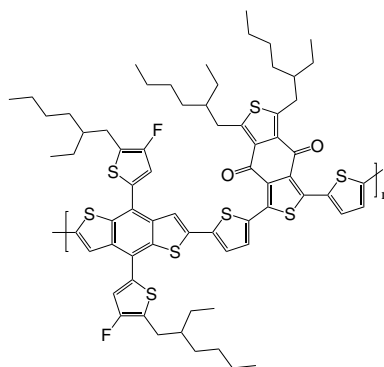
Poly[(5,6-dihydro-5-octyl-4,6-dioxo-4H-thieno[3,4-c]pyrrole-1,3-diyl)[4,8-bis[5-(2-ethylhexyl)-2-thienyl]benzo[1,2-b:4,5-b']dithiophene-2,6-diyl]]

CAS No. : 1426534-44-2  
 Grade : Mw = 50,000-150,000 (GPC)  
 Formula : (C<sub>48</sub>H<sub>57</sub>NO<sub>2</sub>S<sub>5</sub>)<sub>n</sub>  
 UV : 557, 614 nm (film)

**LT-S9457** | PM6 (PBDB-T-2F)

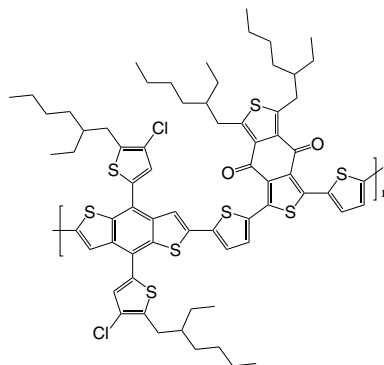
Poly[[4,8-bis[5-(2-ethylhexyl)-4-fluoro-2-thienyl]benzo-[1,2-b:4,5-b']dithiophene-2,6-diyl]-2,5-thiophenediyl-[5,7-bis(2-ethylhexyl)-4,8-dioxo-4H,8H-benzo[1,2-c:4,5-c']-dithiophene-1,3-diyl]-2,5-thiophenediyl]

CAS No. : 1802013-83-7  
 Grade : MW = 10000~100000 (GPC)  
 Formula : (C<sub>68</sub>H<sub>76</sub>F<sub>2</sub>O<sub>2</sub>S<sub>8</sub>)<sub>n</sub>  
 UV : 614 nm (in CHCl<sub>3</sub>)

**LT-S9458** | PBDB-T-2Cl

Poly[[4,8-bis[4-chloro-5-(2-ethylhexyl)-2-thienyl]benzo-[1,2-b:4,5-b']dithiophene-2,6-diyl]-2,5-thiophenediyl-[5,7-bis(2-ethylhexyl)-4,8-dioxo-4H,8H-benzo[1,2-c:4,5-c']-dithiophene-1,3-diyl]-2,5-thiophenediyl]

CAS No. : 2239295-71-5  
 Grade : Mw > 10,000 (GPC)  
 Formula : (C<sub>68</sub>H<sub>76</sub>Cl<sub>2</sub>O<sub>2</sub>S<sub>8</sub>)<sub>n</sub>

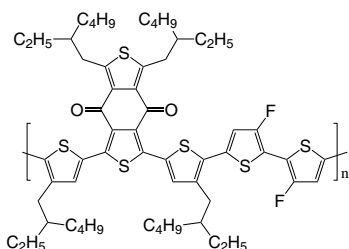




### LT-S9462 | PBDD4T-2F

Poly[[5,7-bis(2-ethylhexyl)-4,8-dioxo-4*H*,8*H*-benzo[1,2-*c*:4,5-*c'*]dithiophene-1,3-diy]] [3,3''-bis(2-ethylhexyl)-3',4'-difluoro[2,2':5',2'':5'',2'''-quaterthiophene]-5,5'''-diy]]

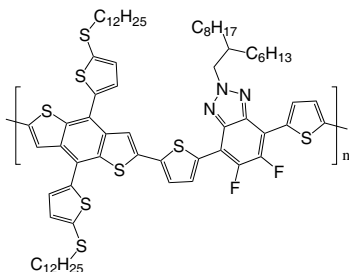
CAS No. : 1890205-85-2  
 Grade : Mw > 10,000 (GPC)  
 Formula : (C<sub>58</sub>H<sub>72</sub>F<sub>2</sub>O<sub>2</sub>S<sub>6</sub>)<sub>n</sub>  
 Solubility : Soluble in CHCl<sub>3</sub>, Chlorobenzene, Dichlorobenzene



### LT-S9463 | J61

Poly[[5,6-difluoro-2-(2-hexyldecyl)-2*H*-benzotriazole-4,7-diy]]-2,5-thiophenediy[[4,8-bis[5-(dodecylthio)-2-thienyl]benzo[1,2-*b*:4,5-*b'*]dithiophene-2,6-diy]]-2,5-thiophenediy]]

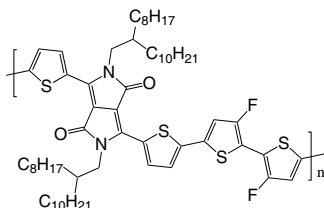
CAS No. : 1887136-03-9  
 Grade : Mw = 50,000-150,000 (GPC)  
 Formula : (C<sub>72</sub>H<sub>93</sub>F<sub>2</sub>N<sub>3</sub>S<sub>8</sub>)<sub>n</sub>



### LT-S9464 | PDPP4T-2F

Poly[[2,5-bis(2-decyltetradecyl)-2,3,5,6-tetrahydro-3,6-dioxopyrrol[3,4-*c*]pyrrole-1,4-diy]] (3',4'-difluoro[2,2':5',2'':5'',2'''-quaterthiophene]-5,5'''-diy]]

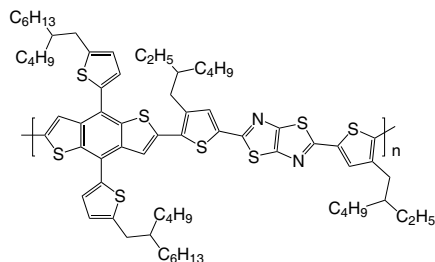
CAS No. : 1926166-46-2  
 Grade : Mw = 20,000~200,000 (GPC)  
 Formula : (C<sub>70</sub>H<sub>104</sub>F<sub>2</sub>N<sub>2</sub>O<sub>2</sub>S<sub>4</sub>)<sub>n</sub>



### LT-S9465 | PTZ1

Poly[thiazolo[5,4-*d*]thiazole-2,5-diy[[4-(2-ethylhexyl)-2,5-thiophenediy]] [4,8-bis[5-(2-butyldecyl)-2-thienyl]benzo[1,2-*b*:4,5-*b'*]dithiophene-2,6-diy]] [3-(2-ethylhexyl)-2,5-thiophenediy]]

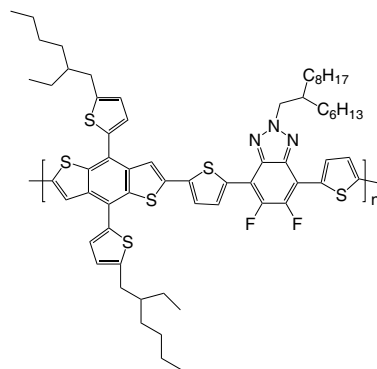
CAS No. : 2029196-34-5  
 Grade : Mw = 10,000-50,000 (GPC)  
 Formula : (C<sub>70</sub>H<sub>92</sub>N<sub>2</sub>S<sub>8</sub>)<sub>n</sub>



### LT-S9469 | J52

Poly[[5,6-difluoro-2-(2-hexyldecyl)-2*H*-benzotriazole-4,7-diy]]-2,5-thiophenediy[[4,8-bis[5-(2-ethylhexyl)-2-thienyl]benzo[1,2-*b*:4,5-*b'*]dithiophene-2,6-diy]]-2,5-thiophenediy]]

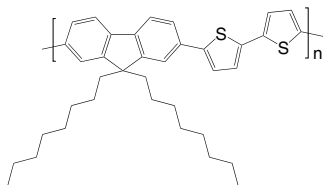
CAS No. : 1887136-01-7  
 Grade : Mw > 10,000 (GPC)  
 Formula : (C<sub>64</sub>H<sub>77</sub>F<sub>2</sub>N<sub>3</sub>S<sub>6</sub>)<sub>n</sub>  
 Solubility : Soluble in CHCl<sub>3</sub>, Chlorobenzene, Dichlorobenzene



## LT-S979 | F8T2

Poly[(9,9-di-*n*-octylfluorenyl-2,7-diyl)-*alt*-2,2'-bithiophene-5,5'-diyl]

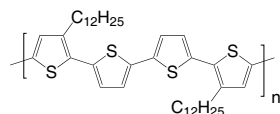
CAS No. : 210347-56-1  
 Grade : Mw >20,000 (GPC)  
 Formula : (C<sub>37</sub>H<sub>44</sub>S<sub>2</sub>)<sub>n</sub>  
 UV : 454 nm (in THF)  
 PL : 500 nm (in THF)  
 Solubility : Soluble in CHCl<sub>3</sub>, Chlorobenzene, Dichlorobenzene



## LT-S980 | PQT-12

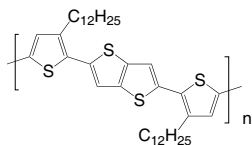
Poly[bis(3-dodecyl-2-thienyl)-2,2'-dithiophene-5,5'-diyl]

CAS No. : 827343-06-6  
 Grade : Mw = 10,000 ~ 40,000 (GPC)  
 Formula : (C<sub>40</sub>H<sub>56</sub>S<sub>4</sub>)<sub>n</sub>  
 UV : 473 nm (in Toluene)  
 Solubility : >5 mg/mL in CHCl<sub>3</sub>

LT-S981 | PBTTT-C<sub>12</sub>

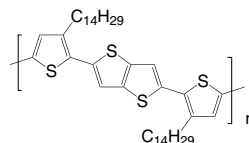
Poly[2,5-bis(3-dodecylthiophen-2-yl)thieno[3,2-b]thiophene]

CAS No. : 888491-18-7  
 Grade : Mw = 10,000~100,000 (GPC)  
 Formula : (C<sub>38</sub>H<sub>54</sub>S<sub>4</sub>)<sub>n</sub>  
 UV : 460 nm (in THF)  
 PL : 557 nm (in THF)  
 Solubility : >5 mg/mL in CHCl<sub>3</sub>

LT-S982 | PBTTT-C<sub>14</sub>

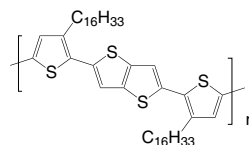
Poly[2,5-bis(3-tetradecylthiophen-2-yl)thieno[3,2-b]thiophene]

CAS No. : 888491-19-8  
 Grade : Mw = 10,000~100,000 (GPC)  
 Formula : (C<sub>38</sub>H<sub>54</sub>S<sub>4</sub>)<sub>n</sub>  
 UV : 466 nm (in THF)  
 PL : 557 nm (in THF)  
 Solubility : >5 mg/mL in CHCl<sub>3</sub>

LT-S9060 | PBTTT-C<sub>16</sub>

Poly[2,5-bis(3-hexadecylthiophen-2-yl)thieno[3,2-b]thiophene]

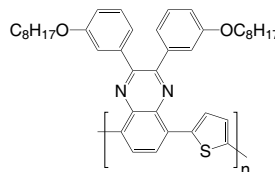
Grade : Mw = 10,000~100,000 (GPC)  
 Formula : (C<sub>46</sub>H<sub>70</sub>S<sub>4</sub>)<sub>n</sub>  
 UV : 466 nm (in THF)  
 PL : 557 nm (in THF)  
 Solubility : >5 mg/mL in CHCl<sub>3</sub>



## LT-S9091 | TQ1

Poly[2,3-bis-(3-octyloxyphenyl)quinoxaline-5,8-diyl-*alt*-thiophene-2,5-diyl]

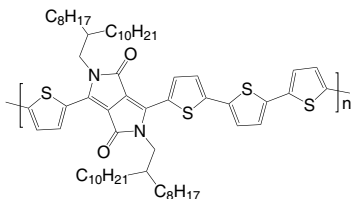
CAS No. : 565228-37-7  
 Grade : Mw >20,000 (GPC)  
 Formula : (C<sub>40</sub>H<sub>46</sub>N<sub>2</sub>O<sub>2</sub>S)<sub>n</sub>  
 Solubility : Soluble in CHCl<sub>3</sub>, Chlorobenzene, Dichlorobenzene



### LT-S9117 | PDQT

Poly[2,2'-[(2,5-bis(2-octyldodecyl)-3,6-dioxo-2,3,5,6-tetrahydropyrrolo[3,4-c]pyrrole-1,4-diyl)dithiophene-5,5'-diyl-*alt*-2,2'-bithiophene-5,5'-diyl]

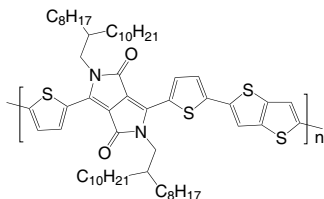
CAS No. : 1267540-03-3  
 Grade : Mw > 30,000 (GPC)  
 Formula : (C<sub>62</sub>H<sub>90</sub>N<sub>2</sub>O<sub>2</sub>S<sub>4</sub>)<sub>n</sub>  
 UV : 810 nm (in CHCl<sub>3</sub>)  
 Solubility : Soluble in CHCl<sub>3</sub>, Chlorobenzene, Dichlorobenzene



### LT-S9118 | PDBT-co-TT

Poly[2,2'-[(2,5-bis(2-octyldodecyl)-3,6-dioxo-2,3,5,6-tetrahydropyrrolo[3,4-c]pyrrole-1,4-diyl)dithiophene-5,5'-diyl-*alt*-thieno[3,2-b]thiophen-2,5-diyl]

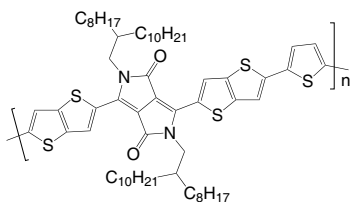
CAS No. : 1260685-65-1  
 Grade : Mw > 30,000 (GPC)  
 Formula : (C<sub>60</sub>H<sub>88</sub>N<sub>2</sub>O<sub>2</sub>S<sub>4</sub>)<sub>n</sub>  
 UV : 810 nm (in CHCl<sub>3</sub>)  
 Solubility : Soluble in CHCl<sub>3</sub>, Chlorobenzene, Dichlorobenzene



### LT-S9119 | PDPBTT

Poly[2,2'-[(2,5-bis(2-octyldodecyl)-3,6-dioxo-2,3,5,6-tetrahydropyrrolo[3,4-c]pyrrole-1,4-diyl)dithieno[3,2-b]thiophene-5,5'-diyl-*alt*-thiophen-2,5-diyl]

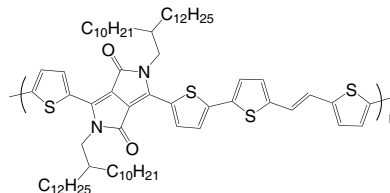
CAS No. : 1270977-98-4  
 Grade : Mw > 30,000 (GPC)  
 Formula : (C<sub>62</sub>H<sub>88</sub>N<sub>2</sub>O<sub>2</sub>S<sub>5</sub>)<sub>n</sub>  
 UV : 812 nm (in CHCl<sub>3</sub>)  
 Solubility : Soluble in CHCl<sub>3</sub>, Chlorobenzene, Dichlorobenzene



### LT-S9133 | PDVT-10

Poly[3,6-dithiophen-2-yl-2,5-di(2-decyltetradecyl)-pyrrolo[3,4-c]pyrrole-1,4-dione-*alt*-thienylenevinylene-2,5-yl]

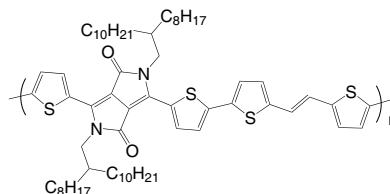
CAS No. : 1442682-99-6  
 Grade : Mw > 30,000 (GPC)  
 Formula : (C<sub>72</sub>H<sub>108</sub>N<sub>2</sub>O<sub>2</sub>S<sub>4</sub>)<sub>n</sub>  
 Solubility : Soluble in CHCl<sub>3</sub>, Chlorobenzene, Dichlorobenzene



### LT-S9155 | PDVT-8

Poly[3,6-dithiophen-2-yl-2,5-di(2-octyldodecyl)pyrrolo[3,4-c]pyrrole-1,4-dione-*alt*-thienylenevinylene-2,5-yl]

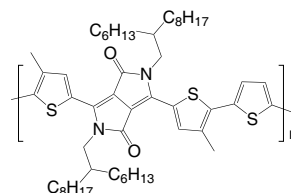
CAS No. : 1403959-01-2  
 Grade : Mw > 20,000 (GPC)  
 Formula : (C<sub>64</sub>H<sub>92</sub>N<sub>2</sub>O<sub>2</sub>S<sub>4</sub>)<sub>n</sub>  
 Solubility : Soluble in CHCl<sub>3</sub>, Chlorobenzene, Dichlorobenzene



### LT-S9178 | PMDPP3T

Poly[[2,5-bis(2-hexyldodecyl)-2,3,5,6-tetrahydro-3,6-dioxopyrrolo[3,4-c]pyrrole-1,4-diyl]-*alt*-[3',3''-dimethyl-2,2':5',2''-terthiophene]-5,5''-diyl]

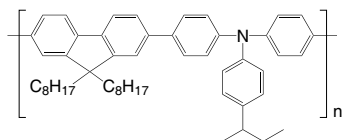
CAS No. : 1429119-71-0  
 Grade : Mw > 30,000 (GPC)  
 Formula : (C<sub>52</sub>H<sub>76</sub>N<sub>2</sub>O<sub>2</sub>S<sub>3</sub>)<sub>n</sub>  
 UV : 830 nm (in CHCl<sub>3</sub>)  
 Solubility : Soluble in CHCl<sub>3</sub>, Chlorobenzene, Dichlorobenzene



### LT-N148 | TFB

Poly[(9,9-dioctylfluorenyl-2,7-diyl)-*co*-(4,4'-(*N*-(4-*sec*-butylphenyl)diphenyl)amine)]

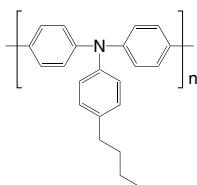
CAS No. : 220797-16-0  
 Grade : Mw > 30,000 (GPC)  
 Formula :  $(C_{51}H_{61}N)_n$   
 UV : 389 nm (in CH<sub>2</sub>Cl<sub>2</sub>)  
 PL : 443 nm (in CH<sub>2</sub>Cl<sub>2</sub>)  
 Solubility : Soluble in CH<sub>2</sub>Cl<sub>2</sub>, Toluene, CHCl<sub>3</sub>



### LT-N149 | Poly-TPD

Poly[*N,N'*-bis(4-butylphenyl)-*N,N'*-bis(phenyl)-benzidine]

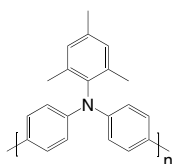
CAS No. : 472960-35-3  
 Grade : Mw = 20,000~200,000 (GPC)  
 Formula :  $(C_{22}H_{21}N)_n$   
 UV : 371, 388 nm (in CH<sub>2</sub>Cl<sub>2</sub>)  
 PL : 424 nm (in CH<sub>2</sub>Cl<sub>2</sub>)  
 Solubility : Soluble in CHCl<sub>3</sub>, Chlorobenzene



### LT-N168 | PTAA

Poly[bis(4-phenyl)(2,4,6-trimethylphenyl)amine]

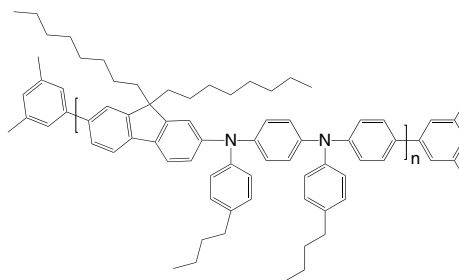
CAS No. : 1333317-99-9  
 Grade : Mw = 20,000~100,000 (GPC)  
 Formula :  $(C_{21}H_{19}N)_n$   
 UV : 388 nm (in CH<sub>2</sub>Cl<sub>2</sub>)  
 PL : 424 nm (in CH<sub>2</sub>Cl<sub>2</sub>)  
 Solubility : Soluble in CHCl<sub>3</sub>, Chlorobenzene, Dichlorobenzene



### LT-N169

Poly[(9,9-dioctylfluorenyl-2,7-diyl)-*co*-(*N,N'*-diphenyl)-*N,N'*-di(*p*-butylphenyl)-1,4-diaminobenzene] end capped with dimethylphenyl

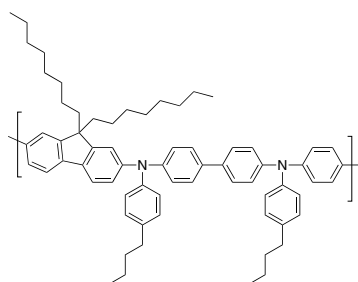
Grade : Mw > 10,000 (GPC)  
 Formula :  $C_{16}H_{18}(C_{67}H_{78}N_2)_n$   
 UV : 380 nm (in THF)  
 PL : 494 nm (in THF)  
 Solubility : Soluble in CHCl<sub>3</sub>, Chlorobenzene, Dichlorobenzene



### LT-N170 | BFB

Poly[(9,9-dioctylfluorenyl-2,7-diyl)-*alt-co*-(*N,N'*-bis(4-butylphenyl)-benzidine-*N,N'*-(1,4-diphenylene))]

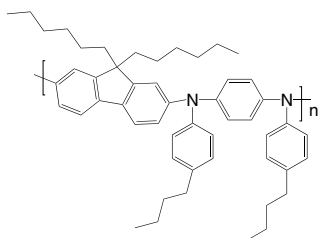
CAS No. : 223569-32-2  
 Grade : Mw > 10,000 (GPC)  
 Formula :  $(C_{73}H_{82}N_2)_n$   
 UV : 380 nm (in THF)  
 PL : 435 nm (in THF)  
 Solubility : Soluble in CHCl<sub>3</sub>, Chlorobenzene, Dichlorobenzene



### LT-N171 | PFHB

Poly[(9,9-dihexylfluorenyl-2,7-diyl)-*alt*-(*N,N'*-bis-(*p*-butylphenyl)-1,4-diaminophenylene)]

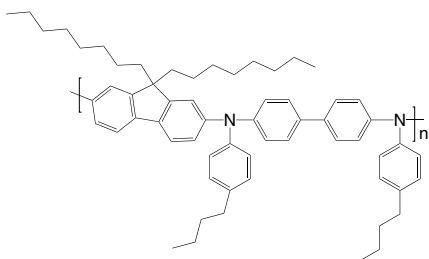
CAS No. : 870517-32-1  
 Grade : Mw > 10,000 (GPC)  
 Formula : (C<sub>51</sub>H<sub>62</sub>N<sub>2</sub>)<sub>n</sub>  
 UV : 398 nm (in THF)  
 PL : 425 nm (in THF)  
 Solubility : Soluble in CHCl<sub>3</sub>, Chlorobenzene, Dichlorobenzene



### LT-N172

Poly[(9,9-dioctylfluorenyl-2,7-diyl)-*alt*-(*N,N'*-bis(*p*-butylphenyl)-1,1'-biphenylene-4,4'-diamine)]

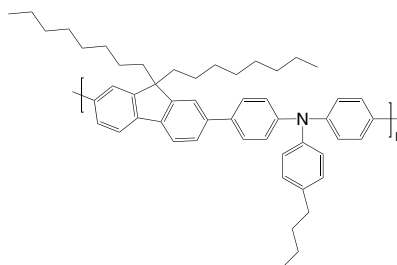
CAS No. : 1115424-53-7  
 Grade : Mw > 10,000 (GPC)  
 Formula : (C<sub>61</sub>H<sub>74</sub>N<sub>2</sub>)<sub>n</sub>  
 UV : 397 nm (in THF)  
 PL : 420 nm (in THF)  
 Solubility : Soluble in CHCl<sub>3</sub>, Chlorobenzene, Dichlorobenzene



### LT-N174

Poly[(9,9-dioctylfluorenyl-2,7-diyl)-*co*-(4,4'-(*N*-(*p*-butylphenyl))diphenylamine)]

CAS No. : 223569-31-1  
 Grade : Mw > 30,000 (GPC)  
 Formula : (C<sub>51</sub>H<sub>61</sub>N)<sub>n</sub>  
 UV : 385 nm (in THF)  
 PL : 434 nm (in THF)  
 Solubility : Soluble in CHCl<sub>3</sub>, Chlorobenzene, Dichlorobenzene



### LT-N175

Poly(1-vinylnaphthalene)

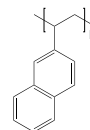
CAS No. : 29793-40-6  
 Grade : Mw > 20,000 (GPC)  
 Formula : (C<sub>12</sub>H<sub>10</sub>)<sub>n</sub>  
 Solubility : Soluble in THF, CHCl<sub>3</sub>, Chlorobenzene, Dichlorobenzene



### LT-N176

Poly(2-vinylnaphthalene)

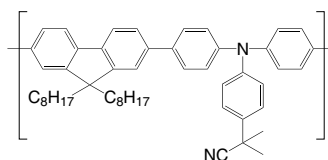
CAS No. : 28406-56-6  
 Grade : Mw > 50,000 (GPC)  
 Formula : (C<sub>12</sub>H<sub>10</sub>)<sub>n</sub>  
 Solubility : Soluble in THF, CHCl<sub>3</sub>, Chlorobenzene, Dichlorobenzene



### LT-N189 | iPrCN / CNPr-TFB

Poly[(9,9-dioctylfluorenyl-2,7-diyl)-*co*-(4,4'-(*N*-(diphenylamine))-(2-cyanoisopropylphenyl))]

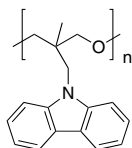
Grade : Mw = 10,000~100,000 (GPC)  
 Formula : (C<sub>51</sub>H<sub>58</sub>N<sub>2</sub>)<sub>n</sub>



## LT-N4037 | PCMO

Poly[3-(carbazol-9-ylmethyl)-3-methyloxetane]

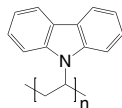
CAS No. : 69678-71-3  
 Grade : Mw >30,000 (GPC)  
 Formula :  $(C_{17}H_{17}NO)_n$   
 UV : 237, 263 nm (in  $CH_2Cl_2$ )  
 Solubility : Soluble in THF,  $CHCl_3$ , Chlorobenzene, Dichlorobenzene



## LT-N4077 | PVK

Poly(9-vinylcarbazole)

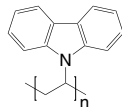
CAS No. : 25067-59-8  
 Grade : Mw >20,000 (GPC)  
 Formula :  $(C_{14}H_{11}N)_n$   
 UV : 261, 294 nm (in  $CH_2Cl_2$ )  
 PL : 380 nm (in THF)  
 Solubility : Soluble in THF,  $CHCl_3$ , Chlorobenzene, Dichlorobenzene



## LT-N4078 | PVK

Poly(9-vinylcarbazole)

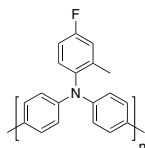
CAS No. : 25067-59-8  
 Grade : Mw >100,000 (GPC)  
 Formula :  $(C_{14}H_{11}N)_n$   
 UV : 261, 294 nm (in  $CH_2Cl_2$ )  
 PL : 380 nm (in THF)  
 Solubility : Soluble in THF,  $CHCl_3$ , Chlorobenzene, Dichlorobenzene

**NEW**

## LT-N1021 | 1F-PTAA

Poly(bis(4-phenyl)(4-fluoro-2-methylphenyl)amine)

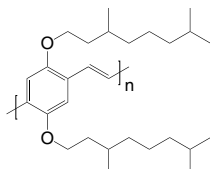
Grade : Mw >20,000  
 Formula :  $(C_{19}H_{14}FN)_n$   
 HOMO : -5.52  
 LUMO : -2.55



### LT-A1001

Poly[2,5-bis(3',7'-dimethyloctyloxy)-1,4-phenylenevinylene]

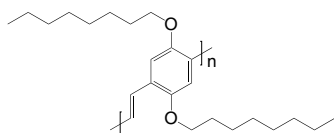
CAS No. : 189012-99-5  
 Grade : Mw > 100,000 (GPC)  
 Formula : (C<sub>28</sub>H<sub>46</sub>O<sub>2</sub>)<sub>n</sub>  
 UV : 480 nm (in Toluene)  
 PL : 548 nm (in Toluene)  
 Solubility : Soluble in THF, CHCl<sub>3</sub>, Chlorobenzene, Dichlorobenzene



### LT-A1004

Poly[2,5-bis(octyloxy)-1,4-phenylenevinylene]

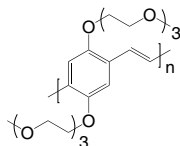
CAS No. : 133069-19-9  
 Grade : Mw > 3,000 (GPC)  
 Formula : (C<sub>24</sub>H<sub>38</sub>O<sub>2</sub>)<sub>n</sub>  
 UV : 477 nm (in CH<sub>2</sub>Cl<sub>2</sub>)  
 PL : 548 nm (in CH<sub>2</sub>Cl<sub>2</sub>)  
 Solubility : Soluble in THF, CHCl<sub>3</sub>, Chlorobenzene, Dichlorobenzene



### LT-A1005 BTEM-PPV

Poly(2,5-bis(1,4,7,10-tetraoxaundecyl)-1,4-phenylenevinylene)

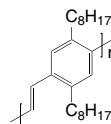
CAS No. : 221244-49-1  
 Grade : Mw > 10,000 (GPC)  
 Formula : (C<sub>21</sub>H<sub>32</sub>O<sub>8</sub>)<sub>n</sub>  
 UV : 491 nm (in THF)  
 PL : 549 nm (in THF)  
 Solubility : Soluble in CHCl<sub>3</sub>, Chlorobenzene, Dichlorobenzene



### LT-A1006 POPPV

Poly(2,5-dioctyl-1,4-phenylenevinylene)

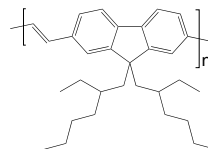
CAS No. : 808735-22-0  
 Grade : Mw > 3,000 (GPC)  
 Formula : (C<sub>24</sub>H<sub>38</sub>)<sub>n</sub>  
 UV : 403 nm (in CH<sub>2</sub>Cl<sub>2</sub>)  
 PL : 491 nm (in CH<sub>2</sub>Cl<sub>2</sub>)  
 Solubility : Soluble in CHCl<sub>3</sub>, Chlorobenzene, Dichlorobenzene



### LT-A1007

Poly(9,9-di-(2-ethylhexyl)-9H-fluorene-2,7-vinylene)

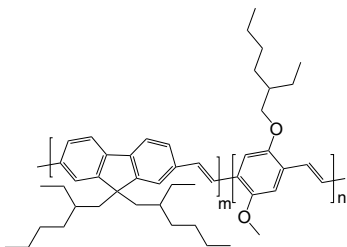
CAS No. : 1019638-19-7  
 Grade : Mw > 20,000 (GPC)  
 Formula : (C<sub>37</sub>H<sub>42</sub>)<sub>n</sub>  
 UV : 280 nm (in CH<sub>2</sub>Cl<sub>2</sub>)  
 PL : 454 nm (in CH<sub>2</sub>Cl<sub>2</sub>)  
 Solubility : Soluble in CHCl<sub>3</sub>, Chlorobenzene, Dichlorobenzene



### LT-A1008

Poly[(9,9-di(2-ethylhexyl)-9H-fluorene-2,7-vinylene)-co-(2-methoxy-5-(2-ethylhexyloxy)-1,4-phenylenevinylene)] (m:n=95:5 mole ratio)

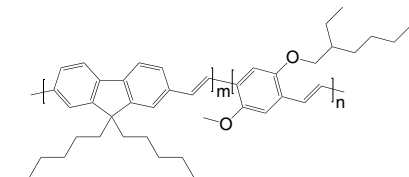
Grade : Mw > 20,000 (GPC)  
 Formula :  $(C_{31}H_{42})_m(C_{17}H_{24}O_2)_n$   
 UV : 280 nm (in CH<sub>2</sub>Cl<sub>2</sub>)  
 PL : 510 nm (in CH<sub>2</sub>Cl<sub>2</sub>)  
 Solubility : Soluble in CHCl<sub>3</sub>, Chlorobenzene, Dichlorobenzene



### LT-A1009 Poly(FV-CO-MEHPV)

Poly[(9,9-dihexyl-9H-fluorene-2,7-vinylene)-co-(1-methoxy-4-(2-ethylhexyloxy)-2,5-phenylenevinylene)] (m:n=95:5 mole ratio)

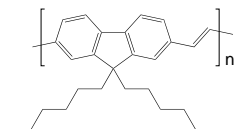
Grade : Mw > 20,000 (GPC)  
 Formula :  $(C_{27}H_{34})_m(C_{17}H_{24}O_2)_n$   
 UV : 280 nm (in CH<sub>2</sub>Cl<sub>2</sub>)  
 PL : 500 nm (in CH<sub>2</sub>Cl<sub>2</sub>)  
 Solubility : Soluble in CHCl<sub>3</sub>, Chlorobenzene, Dichlorobenzene



### LT-A1010

Poly(9,9-di-n-hexylfluorenyl-2,7-vinylene)

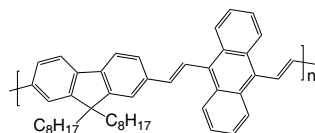
CAS No. : 203927-82-6  
 Grade : Mw > 20,000 (GPC)  
 Formula :  $(C_{27}H_{34})_n$   
 UV : 373 nm (in CH<sub>2</sub>Cl<sub>2</sub>)  
 PL : 454 nm (in CH<sub>2</sub>Cl<sub>2</sub>)  
 Solubility : Soluble in CHCl<sub>3</sub>, Chlorobenzene, Dichlorobenzene



### LT-A1011

Poly[(9,9-dioctyl-2,7-divinylfluorenylene)-alt-(9,10-anthracene)]

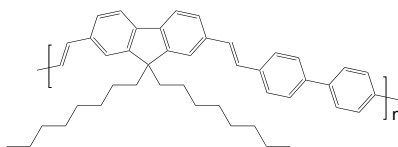
CAS No. : 474975-19-4  
 Grade : Mw > 20,000 (GPC)  
 Formula :  $(C_{47}H_{52})_n$   
 UV : 445 nm (in THF)  
 PL : 556 nm (in THF)  
 Solubility : Soluble in CHCl<sub>3</sub>, Chlorobenzene, Dichlorobenzene



### LT-A1012

Poly[(9,9-dioctyl-2,7-divinylfluorenylene)-alt-(4,4'-biphenylene)]

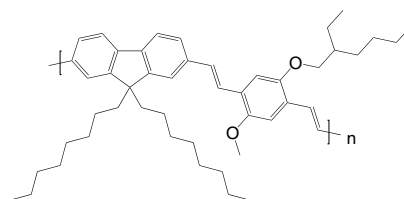
CAS No. : 474975-20-7  
 Grade : Mw > 20,000 (GPC)  
 Formula :  $(C_{45}H_{52})_n$   
 UV : 430 nm (in THF)  
 PL : 448 nm (in THF)  
 Solubility : Soluble in CHCl<sub>3</sub>, Chlorobenzene, Dichlorobenzene



### LT-A1013 PFPV

Poly[(9,9-dioctyl-2,7-divinylfluorenylene)-alt-(2-methoxy-5-(2-ethylhexyloxy)-1,4-phenylene)]

CAS No. : 475101-36-1  
 Grade : Mw > 20,000 (GPC)  
 Formula :  $(C_{48}H_{66}O_2)_n$   
 UV : 480 nm (in THF)  
 PL : 508/534 nm (in THF)  
 Solubility : Soluble in CHCl<sub>3</sub>, Chlorobenzene, Dichlorobenzene

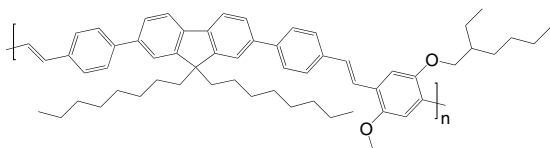




### LT-A1014

Poly[(9,9-dioctylfluorenyl-2,7-diyl)-*co*-(1,4-diphenylenevinylene-2-methoxy-5-(2-ethylhexyloxy)-benzene)]

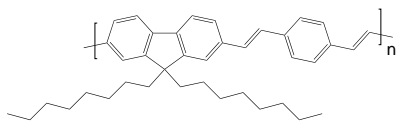
CAS No. : 577705-37-4  
 Grade : Mw > 30,000 (GPC)  
 Formula : (C<sub>60</sub>H<sub>74</sub>O<sub>2</sub>)<sub>n</sub>  
 UV : 426 nm (in THF)  
 PL : 466 nm (in THF)  
 Solubility : Soluble in CHCl<sub>3</sub>, Chlorobenzene, Dichlorobenzene



### LT-A1015

Poly[(9,9-dioctyl-2,7-divinylene-fluorenylene)-*alt*-(1,4-phenylene)]

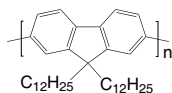
CAS No. : 579505-60-5  
 Grade : Mw > 30,000 (GPC)  
 Formula : (C<sub>39</sub>H<sub>48</sub>)<sub>n</sub>  
 UV : 456 nm (in THF)  
 PL : 495 nm (in THF)  
 Solubility : Soluble in CHCl<sub>3</sub>, Chlorobenzene, Dichlorobenzene



### LT-A1016

Poly(9,9-di-n-dodecylfluorenyl-2,7-diyl)

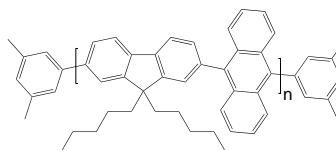
CAS No. : 248256-53-3  
 Grade : Mw > 50,000 (GPC)  
 Formula : (C<sub>37</sub>H<sub>56</sub>)<sub>n</sub>  
 UV : 369 nm (in CH<sub>2</sub>Cl<sub>2</sub>)  
 PL : 421 nm (in CH<sub>2</sub>Cl<sub>2</sub>)  
 Solubility : Soluble in CHCl<sub>3</sub>, Chlorobenzene, Dichlorobenzene



### LT-A1017

Poly[(9,9-dihexylfluorene-2,7-diyl)-*co*-(anthracen-9,10-diyl)] end capped with dimethylphenyl

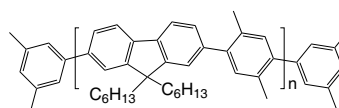
Grade : Mw > 10,000 (GPC)  
 Formula : C<sub>16</sub>H<sub>18</sub>(C<sub>39</sub>H<sub>40</sub>)<sub>n</sub>  
 UV : 375 nm (in CH<sub>2</sub>Cl<sub>2</sub>)  
 PL : 440 nm (in CH<sub>2</sub>Cl<sub>2</sub>)  
 Solubility : Soluble in CHCl<sub>3</sub>, Chlorobenzene, Dichlorobenzene



### LT-A1018

Poly[(9,9-dihexylfluorene-2,7-diyl)-*alt*-(2,5-dimethyl-1,4-phenylene)] end capped with dimethylphenyl

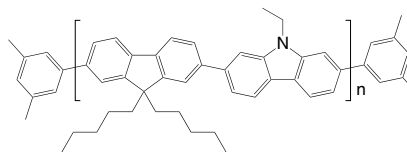
CAS No. : 579505-48-9  
 Grade : Mw > 20,000 (GPC)  
 Formula : C<sub>16</sub>H<sub>18</sub>(C<sub>33</sub>H<sub>40</sub>)<sub>n</sub>  
 UV : 330 nm (in CH<sub>2</sub>Cl<sub>2</sub>)  
 PL : 378 nm (in CH<sub>2</sub>Cl<sub>2</sub>)  
 Solubility : Soluble in CHCl<sub>3</sub>, Chlorobenzene, Dichlorobenzene



### LT-A1019

Poly[(9,9-dihexylfluorene-2,7-diyl)-*co*-(9-ethylcarbazol-2,7-diyl)] end capped with dimethylphenyl

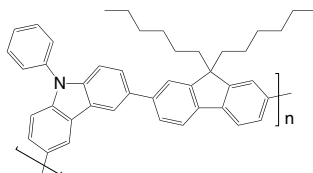
Grade : Mw > 20,000 (GPC)  
 Formula : C<sub>16</sub>H<sub>18</sub>(C<sub>39</sub>H<sub>43</sub>N)<sub>n</sub>  
 UV : 374 nm (in CH<sub>2</sub>Cl<sub>2</sub>)  
 PL : 417 nm (in CH<sub>2</sub>Cl<sub>2</sub>)  
 Solubility : Soluble in CHCl<sub>3</sub>, Chlorobenzene, Dichlorobenzene



### LT-A1020

Poly(9,9-n-dihexyl-2,7-fluorene-*alt*-9-phenyl-3,6-carbazole)

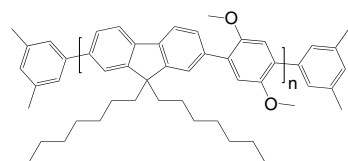
CAS No. : 856893-75-9  
 Grade : Mw > 30,000 (GPC)  
 Formula :  $(C_{43}H_{43}N)_n$   
 UV : 333 nm (in  $CH_2Cl_2$ )  
 PL : 398 nm (in  $CH_2Cl_2$ )  
 Solubility : Soluble in  $CHCl_3$ , Chlorobenzene, Dichlorobenzene



### LT-A1021

Poly[[9,9-dioctylfluorenyl-2,7-diyl]-*co*-(1,4-(2,5-dimethoxy)benzene)] end capped with dimethylphenyl

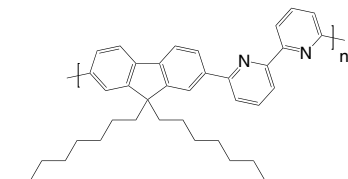
Grade : Mw > 20,000 (GPC)  
 Formula :  $C_{16}H_{18}(C_{37}H_{48}O_2)_n$   
 UV : 369 nm (in THF)  
 PL : 410 nm (in THF)  
 Solubility : Soluble in  $CHCl_3$ , Chlorobenzene, Dichlorobenzene



### LT-A1023 PFO-BPy

Poly[[9,9-dioctylfluorenyl-2,7-diyl]-*alt*-(6,6'-(2,2'-bipyridine))]

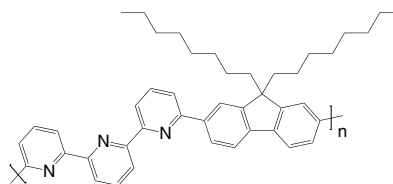
CAS No. : 1423043-97-3  
 Grade : Mw > 10,000 (GPC)  
 Formula :  $(C_{39}H_{46}N_2)_n$   
 UV : 360 nm (in THF)  
 PL : 373/392nm (in THF)  
 Solubility : Soluble in  $CHCl_3$ , Chlorobenzene, Dichlorobenzene



### LT-A1024

Poly[(9,9-dioctylfluorenyl-2,7-diyl)-*alt*-(6,6'-(2,2':6',2''-terpyridine))]

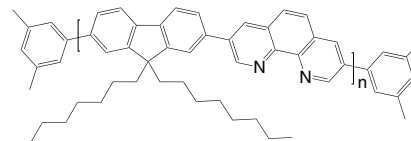
CAS No. : 934690-41-2  
 Grade : Mw > 10,000 (GPC)  
 Formula :  $(C_{44}H_{49}N_3)_n$   
 UV : 347 nm (in THF)  
 PL : 368 nm (in THF)  
 Solubility : Soluble in  $CHCl_3$ , Chlorobenzene, Dichlorobenzene



### LT-A1025

Poly[[9,9-dioctyl-2,7-fluorenylene]-*co*-(3,8-phenanthroline)] end capped with dimethylphenyl

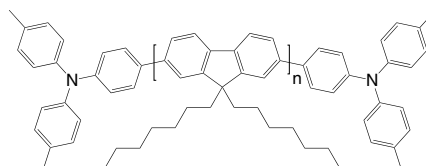
Grade : Mw > 30,000 (GPC)  
 Formula :  $C_{16}H_{18}(C_{41}H_{46}N_2)_n$   
 UV : 388 nm (in THF)  
 PL : 410 nm (in THF)  
 Solubility : Soluble in  $CHCl_3$ , Chlorobenzene, Dichlorobenzene



### LT-A1026

Poly[9,9-dioctylfluorenyl-2,7-diyl] end capped with *N,N*-bis(4-methylphenyl)aniline

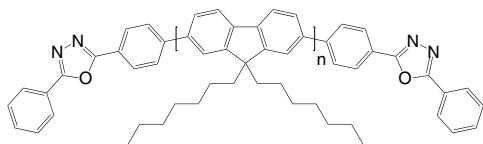
Grade : Mw > 20,000 (GPC)  
 Formula :  $C_{40}H_{36}N_2(C_{29}H_{40})_n$   
 UV : 393 nm (in THF)  
 PL : 412 nm (in THF)  
 Solubility : Soluble in  $CHCl_3$ , Chlorobenzene, Dichlorobenzene



### LT-A1027

Poly[9,9-dioctylfluorenyl-2,7-diyl] end capped with 2,5-diphenyl-1,2,4-oxadiazole

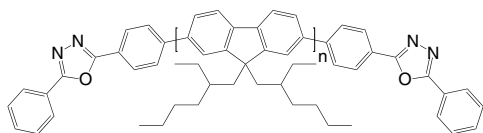
Grade : Mw > 20,000 (GPC)  
 Formula :  $C_{28}H_{18}N_4O_2(C_{29}H_{42})_n$   
 UV : 393 nm (in THF)  
 PL : 412 nm (in THF)  
 Solubility : Soluble in  $CHCl_3$ , Chlorobenzene, Dichlorobenzene



### LT-A1028

Poly[9,9-di-(2-ethylhexyl)-fluorenyl-2,7-diyl] end capped with 2,5-diphenyl-1,2,4-oxadiazole

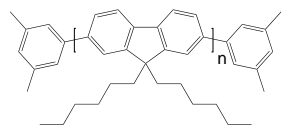
Grade : Mw > 10,000 (GPC)  
 Formula :  $C_{28}H_{18}N_4O_2(C_{29}H_{40})_n$   
 UV : 393 nm (in THF)  
 PL : 412 nm (in THF)  
 Solubility : Soluble in  $CHCl_3$ , Chlorobenzene, Dichlorobenzene



### LT-A1029

Poly[9,9-dihexylfluorenyl-2,7-diyl] end capped with dimethylphenyl

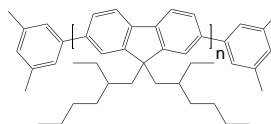
CAS No. : 1010129-39-1  
 Grade : Mw = 50,000 ~ 150,000 (GPC)  
 Formula :  $C_{16}H_{16}(C_{25}H_{32})_n$   
 UV : 393 nm (in THF)  
 PL : 412 nm (in THF)  
 Solubility : Soluble in  $CHCl_3$ , Chlorobenzene, Dichlorobenzene



### LT-A1030

Poly[9,9-di-(2-ethylhexyl)-fluorenyl-2,7-diyl] end capped with dimethylphenyl

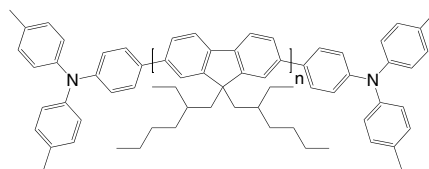
Grade : Mw > 20,000 (GPC)  
 Formula :  $C_{16}H_{18}(C_{29}H_{40})_n$   
 UV : 393 nm (in THF)  
 PL : 412 nm (in THF)  
 Solubility : Soluble in  $CHCl_3$ , Chlorobenzene, Dichlorobenzene



### LT-A1031

Poly[9,9-di(2-ethylhexyl)-fluorenyl-2,7-diyl] end capped with *N,N*-bis(4-methylphenyl)aniline

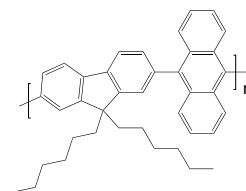
Grade : Mw > 10,000 (GPC)  
 Formula :  $C_{40}H_{36}N_2(C_{29}H_{40})_n$   
 UV : 393 nm (in THF)  
 PL : 412 nm (in THF)  
 Solubility : Soluble in  $CHCl_3$ , Chlorobenzene, Dichlorobenzene



### LT-A1032 PFH-A

Poly[(9,9-dihexylfluorenyl-2,7-diyl)-co-(9,10-anthracene)]

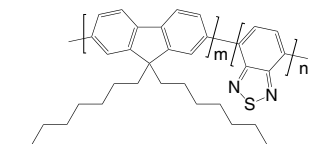
CAS No. : 474975-22-9  
 Grade : Mw > 10,000 (GPC)  
 Formula :  $(C_{39}H_{40})_n$   
 UV : 375 nm (in THF)  
 PL : 440 nm (in THF)  
 Solubility : Soluble in  $CHCl_3$ , Chlorobenzene, Dichlorobenzene



## LT-A1033

Poly[(9,9-dioctylfluorenyl-2,7-diyl)-*co*-(1,4-benzo-[2,1,3]-thiadiazole)] (m:n=95:5 mole ratio)

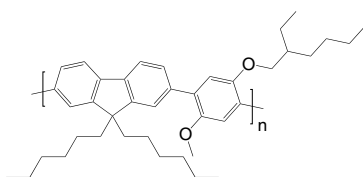
Grade	: Mw > 20,000 (GPC)
Formula	: (C <sub>29</sub> H <sub>40</sub> ) <sub>m</sub> (C <sub>6</sub> H <sub>2</sub> N <sub>2</sub> S) <sub>n</sub>
UV	: 386 nm (in THF)
PL	: 535 nm (in THF)
Solubility	: Soluble in CHCl <sub>3</sub> , Chlorobenzene, Dichlorobenzene



## LT-A1034

Poly[(9,9-dihexylfluorenyl-2,7-diyl)-*alt*-(2-methoxy-5-(2-ethylhexyloxy)-1,4-phenylene)]

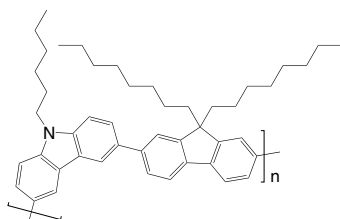
CAS No.	: 475102-99-9
Grade	: M <sub>w</sub> > 10,000 (GPC)
Formula	: (C <sub>40</sub> H <sub>54</sub> O <sub>2</sub> ) <sub>n</sub>
UV	: 366 nm (in THF)
PL	: 410 nm (in THF)
Solubility	: Soluble in CHCl <sub>3</sub> , Chlorobenzene, Dichlorobenzene



## LT-A1035

Poly[(9,9-dioctylfluorenyl-2,7-diyl)-*alt*-(9-hexyl-3,6-carbazole)]

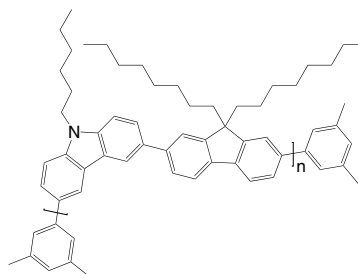
Grade	: Mw > 10,000 (GPC)
Formula	: (C <sub>47</sub> H <sub>59</sub> N) <sub>n</sub>
UV	: 360 nm (in THF)
PL	: 410 nm (in THF)
Solubility	: Soluble in CHCl <sub>3</sub> , Chlorobenzene, Dichlorobenzene



## LT-A1036

Poly[(9,9-dioctylfluorenyl-2,7-diyl)-*co*-(9-hexyl-3,6-carbazole)] end capped with dimethylphenyl

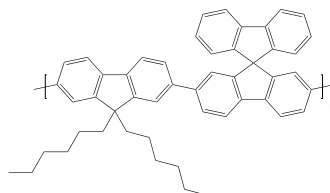
Grade	: Mw > 10,000 (GPC)
Formula	: C <sub>16</sub> H <sub>18</sub> (C <sub>47</sub> H <sub>59</sub> N) <sub>n</sub>
UV	: 364 nm (in THF)
PL	: 412 nm (in THF)
Solubility	: Soluble in CHCl <sub>3</sub> , Chlorobenzene, Dichlorobenzene



## LT-A1037

Poly[(9,9-dihexylfluorenyl-2,7-diyl)-*alt*-(9,9'-spirobifluorene-2,7-diyl)]

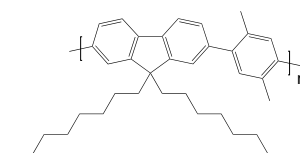
CAS No.	: 474975-24-1
Grade	: Mw > 20,000 (GPC)
Formula	: (C <sub>50</sub> H <sub>46</sub> ) <sub>n</sub>
UV	: 380 nm (in THF)
PL	: 410 nm (in THF)
Solubility	: Soluble in CHCl <sub>3</sub> , Chlorobenzene, Dichlorobenzene



## LT-A1038

Poly[(9,9-dioctylfluorenyl-2,7-diyl)-*co*-(2,5-p-xylene)]

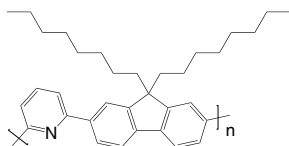
CAS No.	: 1687752-52-8
Grade	: Mw > 20,000 (GPC)
Formula	: (C <sub>37</sub> H <sub>48</sub> ) <sub>n</sub>
UV	: 335 nm (in THF)
PL	: 378 nm (in THF)
Solubility	: Soluble in CHCl <sub>3</sub> , Chlorobenzene, Dichlorobenzene



### LT-A1039

Poly[(9,9-dioctylfluorenyl-2,7-diyl)-*alt*-(2,6-pyridine)]

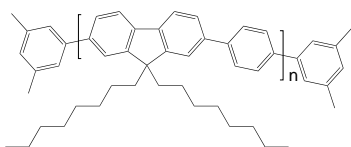
CAS No. : 773895-96-8  
 Grade : Mw >20,000 (GPC)  
 Formula :  $(C_{34}H_{43}N)_n$   
 UV : 364 nm (in THF)  
 PL : 406 nm (in THF)  
 Solubility : Soluble in  $CHCl_3$ , Chlorobenzene, Dichlorobenzene



### LT-A1040

Poly[(9,9-dioctylfluorenyl-2,7-diyl)-*co*-(1,4-phenylene)]end capped with dimethylphenyl

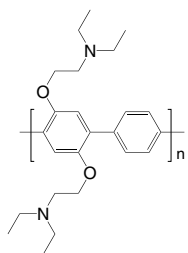
CAS No. : 1025775-95-4  
 Grade : Mw >30,000 (GPC)  
 Formula :  $C_{16}H_{18}(C_{35}H_{44})_n$   
 UV : 377 nm (in THF)  
 PL : 405 nm (in THF)  
 Solubility : Soluble in  $CHCl_3$ , Chlorobenzene, Dichlorobenzene



### LT-A1050

Poly[[2,5-bis(2-(*N,N*-diethylamino)ethoxy)-1,4-phenylene]-*alt*-1,4-phenylene]

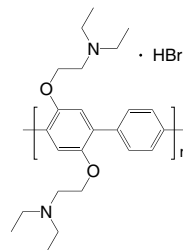
Grade : Mw >30,000 (GPC)  
 Formula :  $(C_{24}H_{34}N_2O_2)_n$   
 UV : 340 nm (in  $CH_2Cl_2$ )  
 PL : 400 nm (in  $CH_2Cl_2$ )  
 Solubility : Soluble in  $CHCl_3$ , Chlorobenzene, Dichlorobenzene



### LT-A1051

Poly[(2,5-bis(2-(*N,N*-diethylammoniumbromide)ethoxy)-1,4-phenylene)-*alt*-1,4-phenylene]

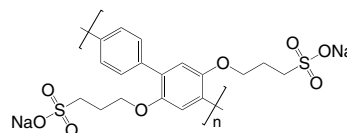
Grade : Mw >30,000 (GPC)  
 Formula :  $(C_{24}H_{36}Br_2N_2O_2)_n$   
 UV : 340 nm (in DMSO)  
 PL : 421 nm (in DMSO)  
 Solubility : Soluble in  $H_2O$



### LT-A1052

Poly(2,5-bis(3-sulfonatopropoxy)-1,4-phenylene, disodium salt-*alt*-1,4-phenylene)

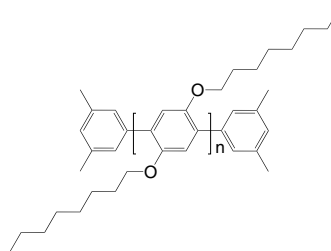
Grade : Mw >30,000 (GPC)  
 Formula :  $(C_{18}H_{18}Na_2O_8S_2)_n$   
 UV : 341 nm (in  $H_2O$ )  
 PL : 420 nm (in  $H_2O$ )  
 Solubility : Soluble in  $H_2O$



### LT-A1054

Poly[2,5-dioctyl-1,4-phenylene] end capped with dimethylphenyl

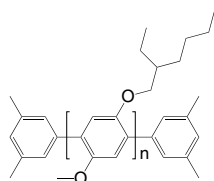
Grade : Mw >10,000 (GPC)  
 Formula :  $C_{16}H_{18}(C_{22}H_{36}O_2)_n$   
 UV : 335 nm (in THF)  
 PL : 397 nm (in THF)  
 Solubility : Soluble in  $CHCl_3$ , Chlorobenzene, Dichlorobenzene



### LT-A1055

Poly[2-methoxy-5-(2-ethylhexyloxy)-1,4-phenylene] end capped with dimethylphenyl

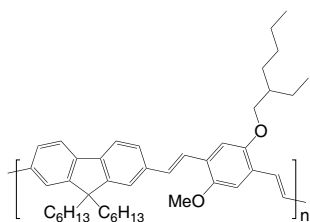
Grade	: Mw > 10,000 (GPC)
Formula	: $C_{16}H_{18}(C_{15}H_{22}O_2)_n$
UV	: 325 nm (in THF)
PL	: 390 nm (in THF)
Solubility	: Soluble in $CHCl_3$ , Chlorobenzene, Dichlorobenzene



### LT-A1056

Poly[(9,9-dihexyl-9H-fluorene-2,7-vinylene)-co-(1-methoxy-4-(2-ethylhexyloxy)-2,5-phenylenevinylene)]

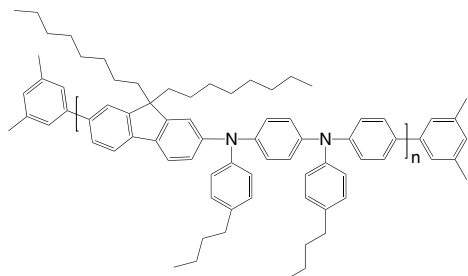
Grade	: Mw > 20,000 (GPC)
Formula	: $(C_{44}H_{58}O_2)_n$
UV	: 325 nm (in THF)
PL	: 390 nm (in THF)
Solubility	: Soluble in $CHCl_3$ , Chlorobenzene, Dichlorobenzene



### LT-N169

Poly[(9,9-dioctylfluorenyl-2,7-diyl)-co-(*N,N'*-diphenyl)-*N,N'*-di(*p*-butylphenyl)-1,4-diaminobenzene] end capped with dimethylphenyl

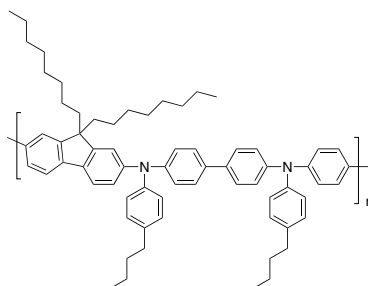
Grade	: Mw > 10,000 (GPC)
Formula	: $C_{16}H_{18}(C_{67}H_{78}N_2)_n$
UV	: 380 nm (in THF)
PL	: 494 nm (in THF)
Solubility	: Soluble in $CHCl_3$ , Chlorobenzene, Dichlorobenzene



### LT-N170

Poly[(9,9-dioctylfluorenyl-2,7-diyl)-*alt*-(*N,N'*-bis(4-butylphenyl)-benzidine-*N,N'*-(1,4-diphenylene))]

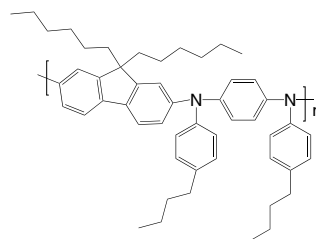
CAS No.	: 223569-32-2
Grade	: Mw > 10,000 (GPC)
Formula	: $(C_{73}H_{82}N_2)_n$
UV	: 380 nm (in THF)
PL	: 435 nm (in THF)
Solubility	: Soluble in $CHCl_3$ , Chlorobenzene, Dichlorobenzene



### LT-N171

Poly[(9,9-dihexylfluorenyl-2,7-diyl)-*alt*-(*N,N'*-bis(*p*-butylphenyl)-1,4-diaminophenylene)]

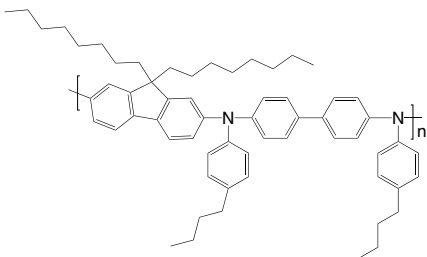
CAS No.	: 870517-32-1
Grade	: Mw > 10,000 (GPC)
Formula	: $(C_{51}H_{62}N_2)_n$
UV	: 398 nm (in THF)
PL	: 425 nm (in THF)
Solubility	: Soluble in $CHCl_3$ , Chlorobenzene, Dichlorobenzene



### LT-N172

Poly[(9,9-dioctylfluorenyl-2,7-diyl)-alt-(N,N'-bis(p-butylphenyl)-1,1'-biphenylene-4,4'-diamine)]

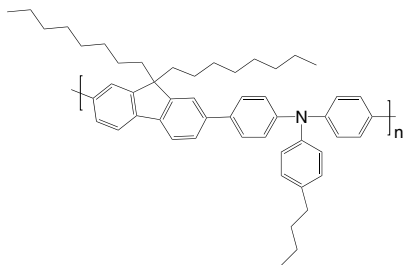
CAS No. : 1115424-53-7  
 Grade : Mw > 10,000 (GPC)  
 Formula :  $(C_{61}H_{74}N_2)_n$   
 UV : 397 nm (in THF)  
 PL : 420 nm (in THF)  
 Solubility : Soluble in  $CHCl_3$ , Chlorobenzene, Dichlorobenzene



### LT-N174

Poly[(9,9-dioctylfluorenyl-2,7-diyl)-co-(4,4'-(N-(p-butylphenyl))diphenylamine)]

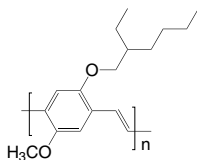
CAS No. : 223569-31-1  
 Grade : Mw > 30,000 (GPC)  
 Formula :  $(C_{51}H_{61}N)_n$   
 UV : 385 nm (in THF)  
 PL : 434 nm (in THF)  
 Solubility : Soluble in  $CHCl_3$ , Chlorobenzene, Dichlorobenzene



### LT-S931 MEH-PPV

Poly[2-methoxy-5-(2-ethylhexyloxy)-1,4-phenylenevinylene]

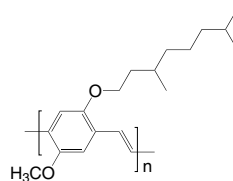
CAS No. : 138184-36-8  
 Grade : Mw > 100,000 (GPC)  
 Formula :  $(C_{17}H_{24}O_2)_n$   
 UV : 501 nm (in  $CH_2Cl_2$ )  
 PL : 502 nm (in  $CH_2Cl_2$ )  
 Solubility : Soluble in THF,  $CHCl_3$ , Chlorobenzene, Dichlorobenzene



### LT-S932 MDMO-PPV

Poly[2-methoxy-5-(3,7-dimethoxyoctyloxy)-1,4-phenylenevinylene]

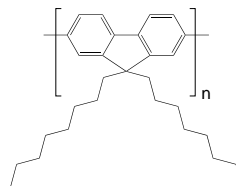
CAS No. : 177716-59-5  
 Grade : Mw > 100,000 (GPC)  
 Formula :  $(C_{19}H_{28}O_2)_n$   
 UV : 485 nm (in  $CH_2Cl_2$ )  
 PL : 555 nm (in  $CH_2Cl_2$ )  
 Solubility : Soluble in THF,  $CHCl_3$ , Chlorobenzene, Dichlorobenzene



### LT-S933 PFO

Poly(9,9-dioctylfluorenyl-2,7-diyl)

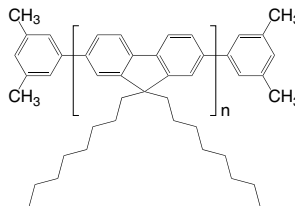
CAS No. : 123864-00-6  
 Grade : Mw = 50,000 ~ 150,000 (GPC)  
 Formula :  $(C_{29}H_{40})_n$   
 UV : 376 nm (in THF)  
 PL : 426 nm (in THF)  
 Solubility : Soluble in THF,  $CHCl_3$ , Chlorobenzene, Dichlorobenzene



### LT-S934 PFO-DMP

Poly(9,9-dioctylfluorenyl-2,7-diyl) end capped with dimethylphenyl

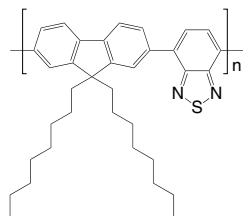
CAS No. : 874816-14-5  
 Grade : Mw = 50,000 ~ 150,000 (GPC)  
 Formula :  $C_{16}H_{18}(C_{29}H_{40})_n$   
 UV : 368 nm (in THF)  
 PL : 421 nm (in THF)  
 Solubility : Soluble in THF,  $CHCl_3$ , Chlorobenzene, Dichlorobenzene



### LT-S957 | F8BT

Poly[(9,9-dioctylfluorenyl-2,7-diyl)-alt-(benzo[2,1,3]thiadiazol-4,7-diyl)]

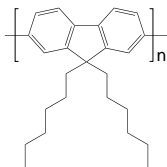
CAS No. : 210347-52-7  
 Grade : Mw >20,000 (GPC)  
 Formula : (C<sub>35</sub>H<sub>42</sub>N<sub>2</sub>S)<sub>n</sub>  
 UV : 453 nm (in THF)  
 PL : 534 nm (in THF)  
 Solubility : Soluble in THF, CHCl<sub>3</sub>, Chlorobenzene, Dichlorobenzene



### LT-S958 | PHF

Poly(9,9-dihexylfluorenyl-2,7-diyl)

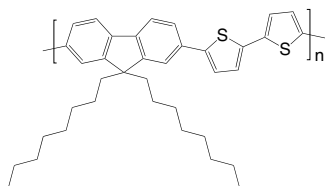
CAS No. : 201807-75-2  
 Grade : Mw =30,000~100,000 (GPC)  
 Formula : (C<sub>25</sub>H<sub>32</sub>)<sub>n</sub>  
 UV : 389 nm (in THF)  
 PL : 418 nm (in THF)  
 Solubility : Soluble in THF, CHCl<sub>3</sub>, Chlorobenzene, Dichlorobenzene



### LT-S979 | F8T2

Poly[(9,9-di-n-octylfluorenyl-2,7-diyl)-alt-2,2'-bithiophene-5,5'-diyl]

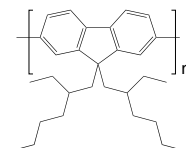
CAS No. : 210347-56-1  
 Grade : Mw >20,000 (GPC)  
 Formula : (C<sub>37</sub>H<sub>44</sub>S<sub>2</sub>)<sub>n</sub>  
 UV : 454 nm (in THF)  
 PL : 500 nm (in THF)  
 Solubility : Soluble in CHCl<sub>3</sub>, Chlorobenzene, Dichlorobenzene



### LT-S9004 | PF2EH

Poly[9,9-bis(2-ethylhexyl)fluorenyl-2,7-diyl]

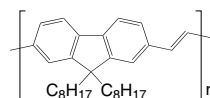
CAS No. : 188201-16-3  
 Grade : Mw >20,000 (GPC)  
 Formula : (C<sub>29</sub>H<sub>40</sub>)<sub>n</sub>  
 UV : 389 nm (in THF)  
 PL : 418 nm (in THF)  
 Solubility : Soluble in THF, CHCl<sub>3</sub>, Chlorobenzene, Dichlorobenzene



### LT-S9006

Poly[(9,9-dioctyl-9H-fluorene-2,7-diyl)-(1E)-1,2-ethene-diyl]

CAS No. : 360068-36-6  
 Grade : Mw >20,000 (GPC)  
 Formula : (C<sub>31</sub>H<sub>42</sub>)<sub>n</sub>  
 UV : 455 nm (in CH<sub>2</sub>Cl<sub>2</sub>)  
 Solubility : Soluble in CHCl<sub>3</sub>, Chlorobenzene, Dichlorobenzene

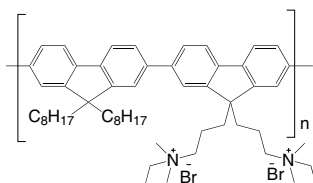




### LT-N878 | PFN-Br

Poly[(9,9-bis(3'-((*N,N*-dimethyl)-*N*-ethylammonium)-propyl)-2,7-fluorene)-*alt*-2,7-(9,9-dioctylfluorene)]dibromide

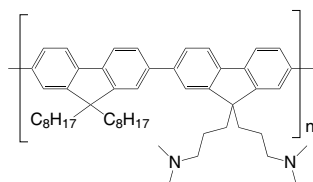
CAS No. : 889672-99-5  
 Grade : Mw > 10,000 (GPC)  
 Formula : (C<sub>56</sub>H<sub>80</sub>N<sub>2</sub>Br<sub>2</sub>)<sub>n</sub>  
 UV : 375 nm (in MeOH)  
 PL : 440 nm (in MeOH)  
 Solubility : Soluble in MeOH



### LT-N4027 | PFN-DOF

Poly[(9,9-bis(3'-((*N,N*-dimethylamino)propyl)-2,7-fluorene)-*alt*-2,7-(9,9-dioctylfluorene)]

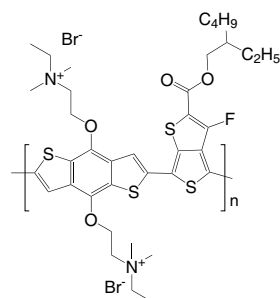
CAS No. : 673474-75-4  
 Grade : Mw > 10,000 (GPC)  
 Formula : (C<sub>52</sub>H<sub>70</sub>N<sub>2</sub>)<sub>n</sub>  
 UV : 378 nm (in CH<sub>2</sub>Cl<sub>2</sub>)  
 PL : 414 nm (in CH<sub>2</sub>Cl<sub>2</sub>)  
 Solubility : Soluble in CH<sub>2</sub>Cl<sub>2</sub>, CHCl<sub>3</sub>, Toluene



### LT-S9274 | PTB7-NBr

Poly{4,8-bis{[(*N,N*-dimethyl)-*N*-ethylammonium]propyloxy}benzo[1,2-*b*:4,5-*b'*]dithiophene-2,6-diyl-*alt*-3-fluoro-2-[(2-ethylhexyl)carbonyl]thieno[3,4-*b'*]thiophene-4,6-diyl}

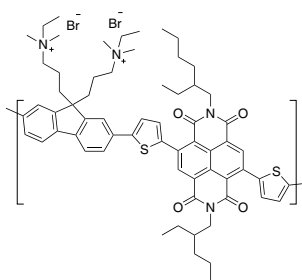
CAS No. : 2092936-05-3  
 Grade : Mw > 10,000 (GPC)  
 Formula : (C<sub>37</sub>H<sub>51</sub>Br<sub>2</sub>FN<sub>2</sub>O<sub>4</sub>S<sub>4</sub>)<sub>n</sub>



### LT-S9289 | PNDIT-F3N-Br

Poly[[2,7-bis(2-ethylhexyl)-1,2,3,6,7,8-hexahydro-1,3,6,8-tetraoxobenzo[*lmn*][3,8]phenanthroline-4,9-diyl]-2,5-thiophenediyl[9,9-bis(3'-((*N,N*-dimethyl)-*N*-ethylammonium)-propyl)-9H-fluorene-2,7-diyl]-2,5-thiophenediyl]

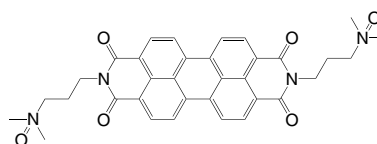
CAS No. : 2169941-79-9  
 Grade : Mw > 10,000 (GPC)  
 Formula : (C<sub>65</sub>H<sub>80</sub>Br<sub>2</sub>N<sub>4</sub>O<sub>4</sub>S<sub>2</sub>)<sub>n</sub>  
 UV : 380, 580 nm (in Methanol)



### LT-S9479 | PDINO

2,9-Bis[3-(dimethylamino)propyl]anthra[2,1,9-*def*:6,5,10-*d'e'f'*]diisoquinoline-1,3,8,10(2H,9H)-tetrone

CAS No. : 1558023-86-1  
 Grade : >97%  
 Formula : C<sub>34</sub>H<sub>32</sub>N<sub>4</sub>O<sub>6</sub>  
 M.W. : 592.64 g/mole  
 HOMO : -6.21 eV  
 LUMO : -3.63 eV



### LT-S9490 | PNDIT-F3N

**NEW**

Poly[[2,7-bis(2-ethylhexyl)-1,2,3,6,7,8-hexahydro-1,3,6,8-tetraoxobenzo[*lmn*][3,8]phenanthroline-4,9-diyl]-2,5-thiophenediyl[9,9-bis(3'-((*N,N*-dimethyl)-*N*-ethylamino)propyl)-9H-fluorene-2,7-diyl]-2,5-thiophenediyl]

CAS No. : 1800206-46-5  
 Grade : Mw > 10,000  
 Formula : (C<sub>61</sub>H<sub>70</sub>N<sub>4</sub>O<sub>4</sub>S<sub>2</sub>)<sub>n</sub>

